



SOUTHWEST MISSOURI STATE UNIVERSITY

Fact Book 1986



TABLE OF CONTENTS

Page

Executive Summary of Statistics 1

General Information 2

History and Accreditation 3

Student State Map with Population 4

University Mission 5

Organizational Chart 6

Organizational Officers 7

Revenue Impact Statement 8

Map of the Campus 9

FACT BOOK

1986

Student Enrollment 10

Fall Enrollment Enrollment, 1950-1985 11

Fall Enrollment by Enrollment Status, 1950-1985 12

Fall Enrollment by Student Level, 1950-1985 13

Fall Enrollment by Sex, 1972-1985 14

Headcount Enrollment by Class in the University, 1950-1985 15

Legal Residence of Students 16

Enrollment by County of Residence 17

Enrollment by State of Residence 18

Credit Hour Production 19

1985-86 - Fall 20

Science or Biology Credits 21

Research Hours per Semester, 1982-83 22

Student Financial Aid, 1985-1986 23

Financial Aid Granted by Category, 1982-1986 24

Financial Aid Summary in Fall Semester, 1982-1986 25

ACT Standard Scores for Freshmen, 1982-83 26

High School Class Rank of First-Time Freshmen, 1982-1986 27

Cumulative GPA by Student Class in Fall Semesters, 1982-1986 28

Percentage Distribution of Degrees by Fall Semesters, 1982-1986 29

Number of Departmental Majors by College, Fall Semesters, 1982-86 30

Degree Programs and Degrees Conferred 31

Current Degree Programs, 1982-87 32

Degrees Currently Offered 33

Degrees of Degrees Conferred, 1982-1986 34

Degrees Conferred by Sex, 1982-1986 35

Faculty and Staff 36

Fall-Time Instructional Faculty by Rank, Sex, and Tenure Status, 1982-1986 37

Annual Salary of Nine-Month Instructional Staff by Rank, 1982-83 38

Number of Employees by Work Category, 1982-1986 39

Full-Time Employees by Job Class, 1982-1986 40

Highest Degree Held by Faculty and Professional Staff, 1986 41

DECEMBER 1986

TABLE OF CONTENTS

	Page
Executive Summary of Statistics	1
General Information	2
History and Accreditation	4
Missouri State Map with Public Colleges and Universities	5
University Mission.....	6
Organizational Chart	7
Organizational Officers	8
Economic Impact Statement	10
Map of the Campus.....	11
Student Information	12
Fall Headcount Enrollment, 1977-1986	14
Fall Enrollment by Enrollment Status, 1977-1986, graph	14
Fall Enrollment by Student Level, 1978-1986, graph.....	15
Fall Enrollment by Sex, 1978-1986, graph.....	15
Headcount Enrollment by Class in Fall Semesters, 1982-1986	16
Legal Residence of Students in Fall Semesters, 1982-1986	16
Enrollment by County of Residence, Fall 1986.....	17
Enrollment by State of Residence, Fall 1986	18
Credit Hour Production by Student Level by Semester, 1982-83 - Fall, 1986	19
Schedule of Incidental Fees, 1982-83 - 1986-87	20
Resident Fees per Semester, 1982-83 - 1986-87, graph.....	20
Student Financial Aid, 1982-1986	21
Financial Aid Granted by Category, 1982-1986, graph	21
Admissions Summary in Fall Semesters, 1982-1986	22
ACT Standard Scores for Freshmen, 1981-82 - 1985-86	23
High School Class Rank of First-Time Freshmen, 1982-1986	23
Cumulative GPA by Student Class in Fall Semesters, 1981-1985	24
Percentage Distribution of Grades in Fall Semesters, 1981-1985	24
Number of Departmental Majors by College, Fall Semesters, 1985-1986.....	25
Degree Programs and Degrees Conferred	26
Current Degree Programs, 1986-87	28
Degrees Currently Offered	30
Number of Degrees Conferred, 1982-1986	31
Degrees Conferred by Sex, 1982-1986, graph	31
Faculty and Staff	32
Full-Time Instructional Faculty by Rank, Sex, and Tenure Status, 1982-1986	34
Average Salary of Nine-Month Instructional Staff by Rank, 1982-83 - 1986-87	35
Number of Employees by Manpower Resource Category, 1982-1986	36
Full-Time Employees by Job Category, 1986, pie chart	36
Highest Degree Held by Faculty and Professional Staff, 1986	37

TABLE OF CONTENTS (cont.)

	Page
Financial Resources	38
Current Funds Revenues, FY 1986, graph.....	40
Current Funds Revenues, FY 1982-1986	40
Current Funds Expenditures, FY 1986, graph.....	41
Current Funds Expenditures, FY 1982-1986	41
Educational and General Funds, FY 1986	42
E & G Funds by Program, pie chart	42
E & G Funds by Expenditure Category, pie chart.....	42
Educational and General Funds, Budgeted FY 1987 and Requested FY 1988	43
Facilities	44
Major Physical Facilities Resource Information, Fall 1986	46
Percent of Classroom Space Utilized in Relation to a Utilization Standard, Fall 1986, graph	47
Percent of Laboratory Space Utilized in Relation to a Utilization Standard, Fall 1986, graph	47
Distribution of Assignable Square Feet of Building Space by Room Use and Program Areas, Fall 1986	48
Building Space by Program Area, pie chart.....	48
Building Space by Room Use, pie chart	48
Classification of Students in University Housing at Beginning of Fall Semester, 1982-1986.....	49
Classification of Students in University Housing by Housing Unit at Beginning of Fall 1986	49
Library Facts	50
Circulation Statistics, 1981-82 - 1985-86	51
Collection at End of Academic Year, 1981-82 - 1985-86	51
Library Expenditures, 1981-82 - 1985-86.....	51
West Plains Campus	52
Fall Headcount Enrollment, 1977-1986	54
Student Credit Hour Production, 1982-83 - Fall, 1986	54
Fall Enrollment by Enrollment Status, 1977-1986, graph	55
Fall Enrollment by Sex, 1977-1986, graph	55
Alumni and Development	56
Alumni by County of Residence, 1986	58
Alumni by State of Residence, 1986.....	59
Alumni Contributions	59
Southwest Missouri State University Foundation	60
Sources of Gifts to the University Foundation, 1983-84 - 1985-86	61
Purposes of Gifts to the University Foundation, 1983-84 - 1985-86	61
Miscellaneous	62
Southwest Missouri State University Centers and Experiment Station.....	64

EXECUTIVE SUMMARY OF STATISTICS

	1981-82	1982-83	1983-84	1984-85	1985-86
Fall Headcount Enrollment	15,361	15,015	15,156	15,121	15,511
Undergraduate - Springfield	13,666	13,508	13,589	13,448	13,652
Undergraduate - West Plains	528	542	583	569	608
Graduate - Springfield	1,167	965	984	1,104	1,251
Fall Student Credit Hours	176,052	174,391	177,321	176,009	180,329
Undergraduate - Springfield	166,180	165,327	167,762	166,261	169,443
Undergraduate - West Plains	4,734	4,624	4,899	4,504	4,968
Graduate - Springfield	5,138	4,440	4,660	5,244	5,918
Average Credit Hour Load	11.5	11.6	11.7	11.6	11.6
Undergraduate - Springfield	12.2	12.2	12.3	12.4	12.4
Undergraduate - West Plains	9.0	8.5	8.4	7.9	8.2
Graduate - Springfield	4.4	4.6	4.7	4.8	4.7
Degrees Awarded, Fiscal Year					
Associate	31	31	21	41	40
Bachelor's	1,895	1,899	1,961	1,829	1,835
Master's	264	215	200	199	222
Specialist	25	19	16	25	34
Instructional Staff Headcount	511	524	529	533	547
Tenured	335	337	347	352	363
Non-Tenured	176	187	182	181	184
Educational & General Space (thousands sq. ft.)*	N/A	N/A	1,013	1,024	1,019
E & G Space/FTE Student (sq. ft. per FTE)*	N/A	N/A	88	89	86
Alumni Contributions (dollars)	214,165	147,275	221,395	312,410	392,996
Educational & General Expenditures (thousands of dollars)	36,336	39,460	44,420	49,693	58,592
E & G Expenditures/FTE Student (dollars)	3,073	3,373	3,733	4,204	4,759

* Springfield Campus only
N/A Not available

General Information

HIGHLIGHTS

- * Southwest Missouri State University is one of five institutions given a regional mission by legislative act in 1919.
- * The University is currently a multipurpose institution offering a variety of programs and services at two locations. In addition to the main campus at Springfield, a residence center was established in 1963 at West Plains, 110 miles to the southeast.
- * The University is one of the thirteen, four-year, public-supported institutions of higher education in Missouri.
- * Dr. Marshall Gordon, the University's seventh and current president, has served since June of 1983.
- * The academic organization of the Springfield campus consists of six colleges, a graduate school, and an office of continuing education.
- * The University had an estimated economic impact on Springfield and Greene County of approximately \$402 million in 1985-86.



HISTORY AND ACCREDITATION

University Heritage

Southwest Missouri State University was founded in Springfield in 1905 as the Fourth District Normal School. The institution's primary purpose, during its early years, was the preparation of teachers for the public school systems in the southwest region of Missouri. The first name change came in 1919 when the school became Southwest Missouri State Teachers College, reflecting its regional mission. By the mid-1940's, the University had expanded its instructional program beyond teacher education to include the liberal arts and sciences; and as a consequence, the Missouri legislature, in 1945, authorized an official change in the institution's name to Southwest Missouri State College. As additional programs were implemented at the undergraduate level and with the development of graduate education, the University, by 1972, had become an educationally diverse institution. Recognition of this further growth and development again resulted in an official change in name to Southwest Missouri State University. Today, the institution is a multipurpose university providing diverse instructional, research, and service programs.

In addition to the campus at Springfield, a residence center offering freshman and sophomore level courses was established at West Plains. Courses fulfilling the requirements of associate degrees in general studies and nursing are offered at the campus. Other specialty and skills courses commensurate with community needs and interests are also available.

University Setting

Southwest Missouri State University is located in Springfield, the third largest population center in Missouri, a metropolitan statistical area of 224,000. Supported by an industrial/manufacturing base and an expanding service industry in tourism, the community serves as a regional center for health and medical services for southwest Missouri, northwest Arkansas, southeast Kansas, and northeast Oklahoma.

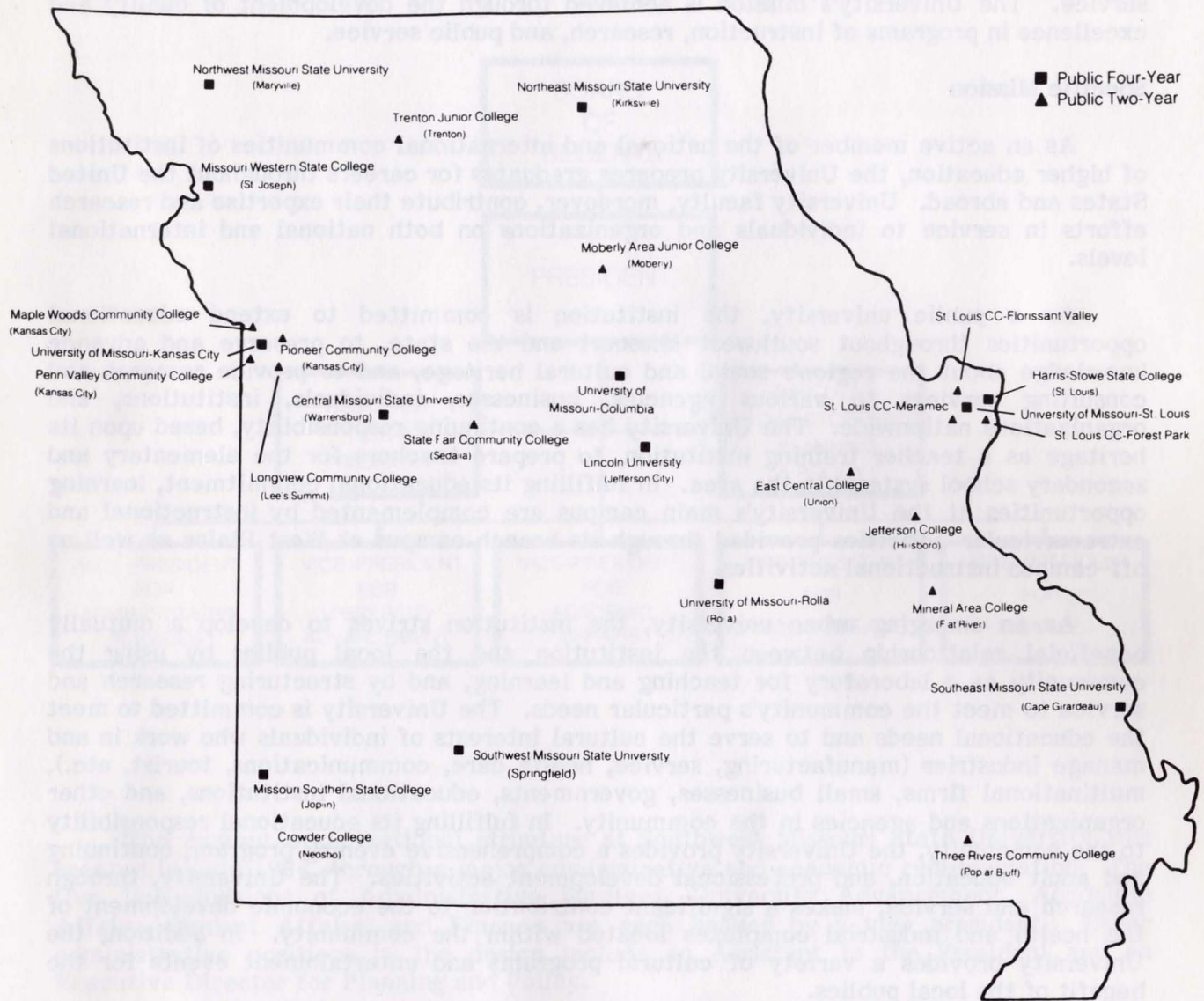
The University's primary service region of southwest Missouri has certain distinctive characteristics which influence various activities and programs of the institution. The southwest region, the fastest growing area in the state with a population of over 720,000, has a unique cultural heritage, a significant agricultural economic base, and a rapidly expanding tourism and recreational industry.

Educationally, the region is served by a diverse mix of both public and private colleges and universities. As the largest and only multipurpose university in southwest Missouri, SMSU provides educational leadership in the region.

Accreditation

The University is accredited to offer baccalaureate and master's degrees by the North Central Association of Colleges and Secondary Schools. The University is professionally accredited by the National Council for Accreditation of Teacher Education, National Association of Schools of Music, The National League for Nursing, The American Chemical Society, and The Council on Social Work Education.

MISSOURI STATE MAP WITH PUBLIC COLLEGES AND UNIVERSITIES



UNIVERSITY MISSION

General Mission

As a public multipurpose institution of higher education, Southwest Missouri State University declares as its mission the advancement of learning, scholarly inquiry, and service. The University's mission is achieved through the development of quality and excellence in programs of instruction, research, and public service.

Specific Mission

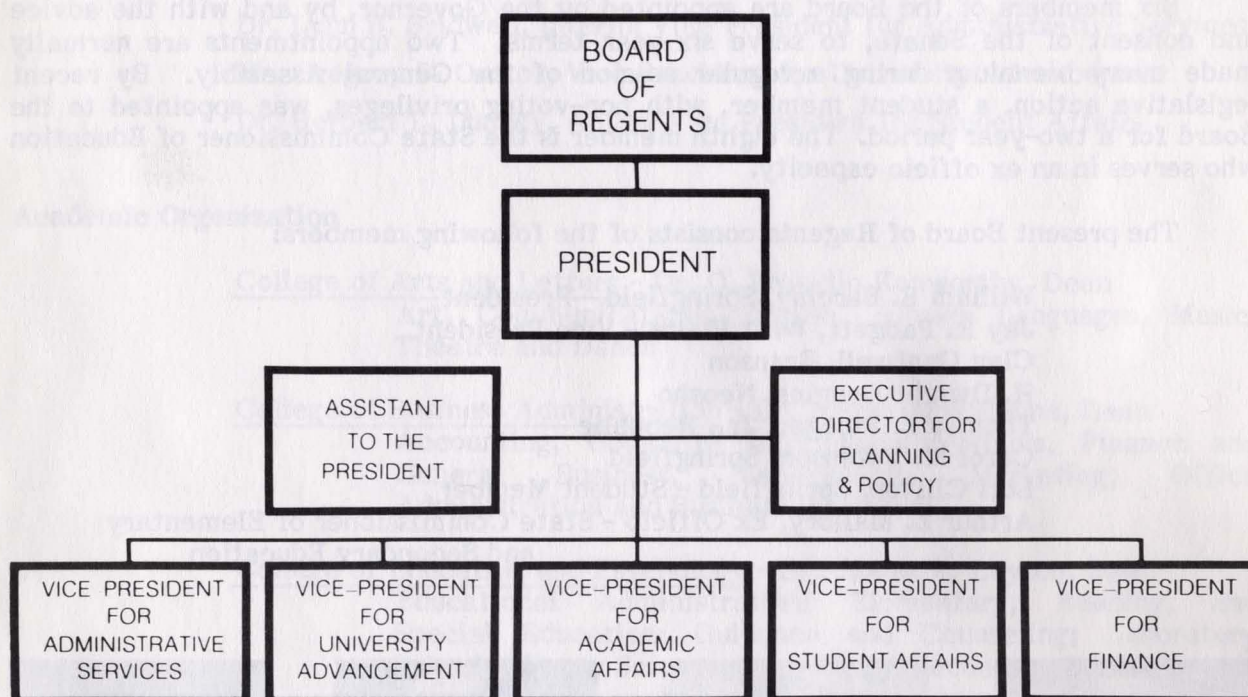
As an active member of the national and international communities of institutions of higher education, the University prepares graduates for careers throughout the United States and abroad. University faculty, moreover, contribute their expertise and research efforts in service to individuals and organizations on both national and international levels.

As a public university, the institution is committed to extend educational opportunities throughout southwest Missouri and the state, to preserve and advance knowledge about the region's social and cultural heritage, and to provide research and consulting services to various agencies, businesses, individuals, institutions, and organizations nationwide. The University has a continuing responsibility, based upon its heritage as a teacher training institution, to prepare teachers for the elementary and secondary school systems in the area. In fulfilling its educational commitment, learning opportunities at the University's main campus are complemented by instructional and extracurricular activities provided through its branch campus at West Plains as well as off-campus instructional activities.

As an emerging urban university, the institution strives to develop a mutually beneficial relationship between the institution and the local publics by using the community as a laboratory for teaching and learning, and by structuring research and service to meet the community's particular needs. The University is committed to meet the educational needs and to serve the cultural interests of individuals who work in and manage industries (manufacturing, service, health care, communications, tourist, etc.), multinational firms, small businesses, governments, educational institutions, and other organizations and agencies in the community. In fulfilling its educational responsibility to the community, the University provides a comprehensive evening program, continuing and adult education, and professional development activities. The University, through research and service, makes a significant contribution to the economic development of the health and industrial complexes located within the community. In addition, the University provides a variety of cultural programs and entertainment events for the benefit of the local publics.

Excerpt from University Mission, Role, and Scope Statement

ORGANIZATIONAL CHART



The current organizational structure at Southwest Missouri State University was created in July 1984, through a major administrative and academic reorganization. The five line divisions of Administrative Services, University Advancement, Academic Affairs, Student Affairs, and Finance are each headed by a vice president. Other administrative positions in the design include an Assistant to the President and an Executive Director for Planning and Policy.

The primary academic programs of the University are organized into six collegiate units—College of Arts and Letters, College of Business Administration, College of Education and Psychology, College of Health and Applied Sciences, College of Humanities and Social Sciences, and College of Science and Mathematics. A Graduate School, the West Plains Campus, and an Office of Continuing Education complete the academic spectrum.

ORGANIZATIONAL OFFICERS

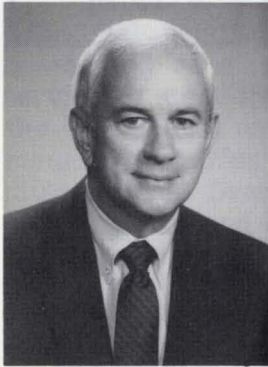
Board of Regents

Southwest Missouri State University is under the general control and management of the Board of Regents, which according to statutes of the state of Missouri possesses full power and authority to adopt all needful rules and regulations for the guidance and supervision of the University.

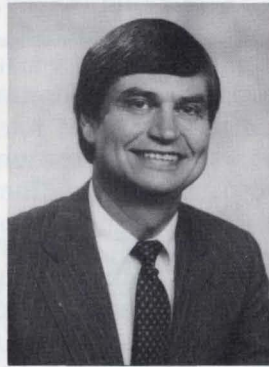
Six members of the Board are appointed by the Governor, by and with the advice and consent of the Senate, to serve six-year terms. Two appointments are normally made every biennium during a regular session of the General Assembly. By recent legislative action, a student member, with non-voting privileges, was appointed to the Board for a two-year period. The eighth member is the State Commissioner of Education who serves in an ex officio capacity.

The present Board of Regents consists of the following members:

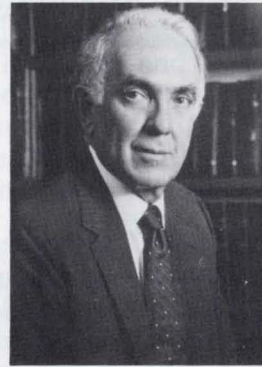
William E. Barclay, Springfield - President
 Jay R. Padgett, West Plains - Vice President
 Clay Cantwell, Branson
 H. Dwight Douglas, Neosho
 Thomas E. Pinegar, Jr., Republic
 Carol M. Robinson, Springfield
 Lori Clifton, Springfield - Student Member
 Arthur L. Mallory, Ex Officio - State Commissioner of Elementary
 and Secondary Education



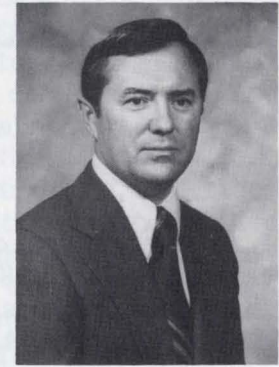
William E. Barclay



Jay R. Padgett



Clay Cantwell



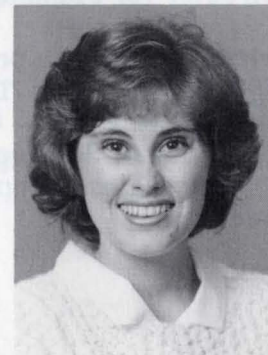
H. Dwight Douglas



Thomas E. Pinegar, Jr.



Carol M. Robinson



Lori Clifton

Administrative Council

Dr. Marshall Gordon, President
 Dr. Russell M. Keeling, Assistant to the President
 Mr. Larry C. Gates, Executive Director for Planning and Policy
 Mr. Thomas E. Allen, Vice President for Finance
 Dr. Donald E. Bowen, Vice President for Academic Affairs
 Dr. Lynn B. Bridwell, Interim Vice President for Administrative Services
 Mr. Gregory P. Onstot, Vice President for University Advancement
 Dr. Herbert L. Lunday, Acting Vice President for Student Affairs

Academic Organization

College of Arts and Letters - Dr. O. Franklin Kenworthy, Dean
 Art, Communications, English, Foreign Languages, Music,
 Theatre and Dance

College of Business Administration - Dr. Ralph W. Williams, Dean
 Accounting, Computer Information Systems, Finance and
 General Business, Management, Marketing, Office
 Administration and Business Education

College of Education and Psychology - Dr. James R. Layton, Dean
 Educational Administration; Elementary, Reading, and
 Special Education; Guidance and Counseling; Laboratory
 School; Library Science; Psychology; Secondary Education and
 Foundations.

College of Health and Applied Sciences - Dr. A. Duane Addleman, Dean
 Agriculture; Communication Disorders; Health, Physical
 Education, and Recreation; Home Economics; Industrial
 Technology; Military Science; Nursing

College of Humanities and Social Sciences - Dr. Bernice S. Warren, Dean
 Economics; History; Political Science and Philosophy;
 Religious Studies; Sociology, Anthropology, and Social Work

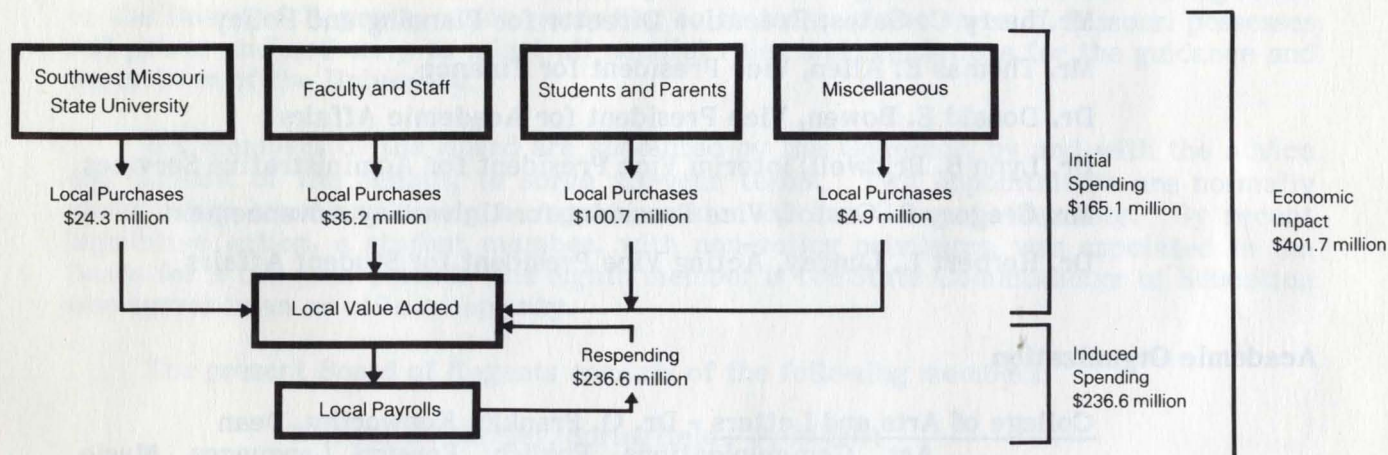
College of Science and Mathematics - Dr. Clifton C. Thompson, Dean
 Biology, Biomedical Sciences, Chemistry, Computer Science,
 Geosciences, Mathematics, Physics and Astronomy

Graduate School - Dr. Paul Toom, Associate Vice President

West Plains Campus - Dr. Richard D. Brauhn, Dean

Office of Continuing Education - Dr. Haldon Funk, Dean

ECONOMIC IMPACT STATEMENT



The University exerts a large influence on the Springfield-Greene County economy while providing instruction, research, and public service. An examination of spending originating from SMSU students, employees, and related groups, provides a means to measure the institution's local economic impact during 1985-86.

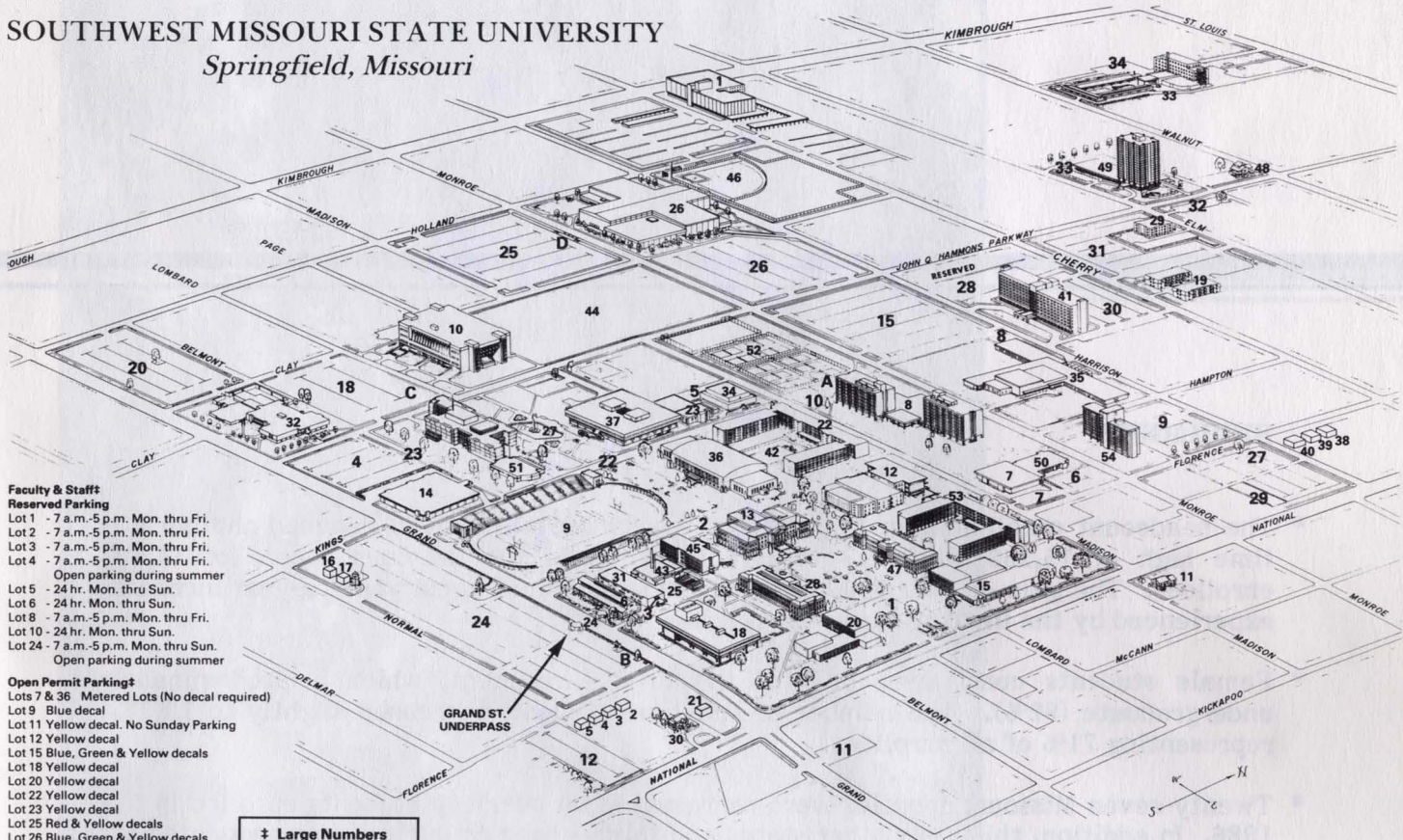
Faculty and staff spending is estimated to be nearly \$26,500 per capita, while students, on the average, spend just over \$6,500 each. Parents of students spend another \$250 per student. In addition, expenditures by the institution for operations and capital projects, and by patrons of auxiliary activities, contribute \$24.3 million and \$3.9 million respectively.

Direct expenditures led to the generation of induced spending through a multiplying effect. In general, a multiplier of 2.26 was used to estimate the effect of most of the dollars spent. A multiplier of 3.41, however, was applied to local purchases by the University. After calculating the effects of these multipliers, an estimated total economic impact of \$401.7 million resulted from the combination of direct and induced spending.

Source: Cox, Larry G., and Wyrick, Thomas L. The Economic Impact of Southwest Missouri State University on the Springfield Economy, 1985-86, Department of Economics, Southwest Missouri State University, May, 1986.

MAP OF THE CAMPUS

SOUTHWEST MISSOURI STATE UNIVERSITY Springfield, Missouri



Faculty & Staff

Reserved Parking

- Lot 1 - 7 a.m.-5 p.m. Mon. thru Fri.
- Lot 2 - 7 a.m.-5 p.m. Mon. thru Fri.
- Lot 3 - 7 a.m.-5 p.m. Mon. thru Fri.
- Lot 4 - 7 a.m.-5 p.m. Mon. thru Fri.
- Open parking during summer
- Lot 5 - 24 hr. Mon. thru Sun.
- Lot 6 - 24 hr. Mon. thru Sun.
- Lot 8 - 7 a.m.-5 p.m. Mon. thru Fri.
- Lot 10 - 24 hr. Mon. thru Sun.
- Lot 24 - 7 a.m.-5 p.m. Mon. thru Sun.
- Open parking during summer

Open Permit Parking†

- Lots 7 & 36 Metered Lots (No decal required)
- Lot 9 Blue decal
- Lot 11 Yellow decal. No Sunday Parking
- Lot 12 Yellow decal
- Lot 15 Blue, Green & Yellow decals
- Lot 18 Yellow decal
- Lot 20 Yellow decal
- Lot 22 Yellow decal
- Lot 23 Yellow decal
- Lot 25 Red & Yellow decals
- Lot 26 Blue, Green & Yellow decals
- Lot 27 Blue & Yellow decals
- Lot 28 Yellow decal
- Lot 29 Yellow decal
- Lot 30 Red decal
- Lot 31 Red decal
- Lot 32 Red decal
- Lot 33 Red decal
- Lot 34 Red decal

Motorcycle Parking†

- Gold-motorcycle parking
- Area-A—West of Lot 10
- Area-B—N.E. Corner Lot 24
- Area-C—N.E. Corner Lot 18
- Area-D—North End Lot 25

- ‡ Large Numbers
- † Letters
- * Small Numbers

INDEX OF BUILDINGS and FACILITIES*

- | | | | | |
|--|---|------------------------------|----------------------------------|-------------------------------|
| 1. Allied Health Building | 12. Campus Union | 23. Forsythe Athletic Center | 34. Library Annex | 45. Pummill Hall |
| 2. Archaeology Research-1020 S. Florence | 13. Carrington Hall | 24. Grand Street Underpass | 35. Laboratory School, Greenwood | 46. Softball Field |
| 3. Archaeology Research-1024 S. Florence | 14. Central Stores and Maintenance | 25. Greenhouse | 36. McDonald Arena | 47. Sicheluff Hall |
| 4. Archaeology Research-1030 S. Florence | 15. Cheek Hall | 26. Hammons Student Center | 37. Meyer Library | 48. Student Exhibition Center |
| 5. Archaeology Research-1034 S. Florence | 16. Child Development Lab-1003 E. Normal | 27. Hammons Fountains | 38. Music-622 S. Florence | 49. Sunvilla Tower |
| 6. Art Annex | 17. Child Development Lab Office-1011 E. Normal | 28. Hill Hall | 39. Music-628 S. Florence | 50. Taylor Health Center |
| 7. Baker Bookstore | 18. Craig Hall | 29. Honors House-912 E. Elm | 40. Music-634 S. Florence | 51. Temple Hall |
| 8. Blair-Shannon House | 19. Dogwood Apartments | 30. KSMU Radio Station | 41. New Residence Hall | 52. Tennis Courts |
| 9. Briggs Stadium | 20. Ellis Hall | 31. Karls Hall | 42. Pool | 53. Wells House |
| 10. Business Administration Building | 21. English Annex-1005 S. National | 32. Kemper Hall | 43. Power House | 54. Woods House |
| 11. Burgess House | 22. Freudenberger House | 33. Kentwood Hall | | |

Student Information

HIGHLIGHTS

- * The headcount enrollment in fall 1986 on the Springfield campus reached another all-time high of 15,233 students. This total eclipsed the previous record of 14,903 enrollees. The gain of over 300 students was one of the largest year-to-year increases experienced by the institution.
- * Female students constituted 53% of the total enrollment, which is predominantly undergraduate (92%). The number of full-time students increased slightly to 10,778, representing 71% of all enrollees.
- * Twenty-seven Missouri counties were represented by over 100 students enrolled in fall 1986. In addition, thirty-six other states and thirty-three countries were accounted for in the student body.
- * Incidental fees continued to increase. Fees for full-time, resident undergraduates (those enrolled for 12 or more credit hours) increased by 9% in the 1986-87 academic year. Moreover, an additional fee was charged for enrolling for more than 12 credit hours per semester.
- * The amount of financial aid awarded to SMSU students in fiscal year 1986 increased by approximately \$3.5 million over the previous year. Of the \$17,259,866 awarded, 76.2% was based on need.

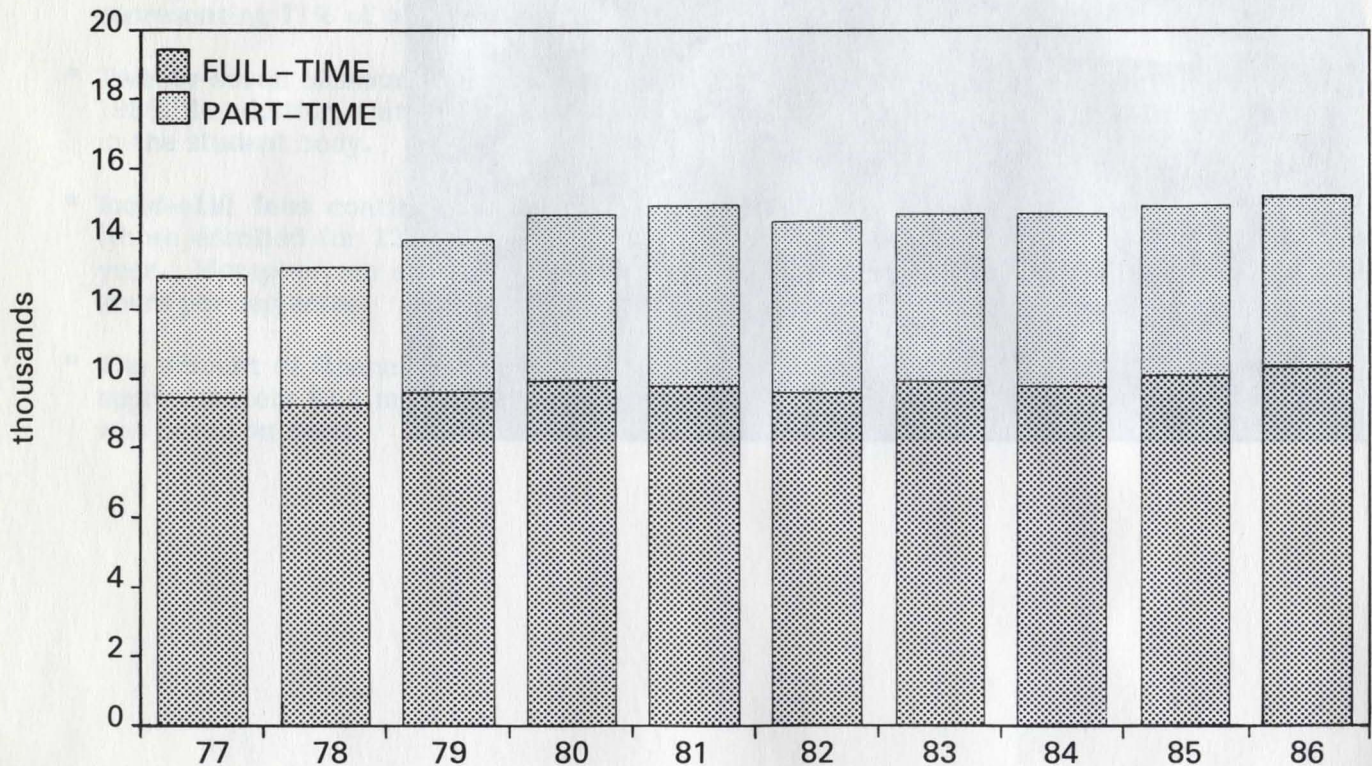


**FALL HEADCOUNT ENROLLMENT
SPRINGFIELD CAMPUS**

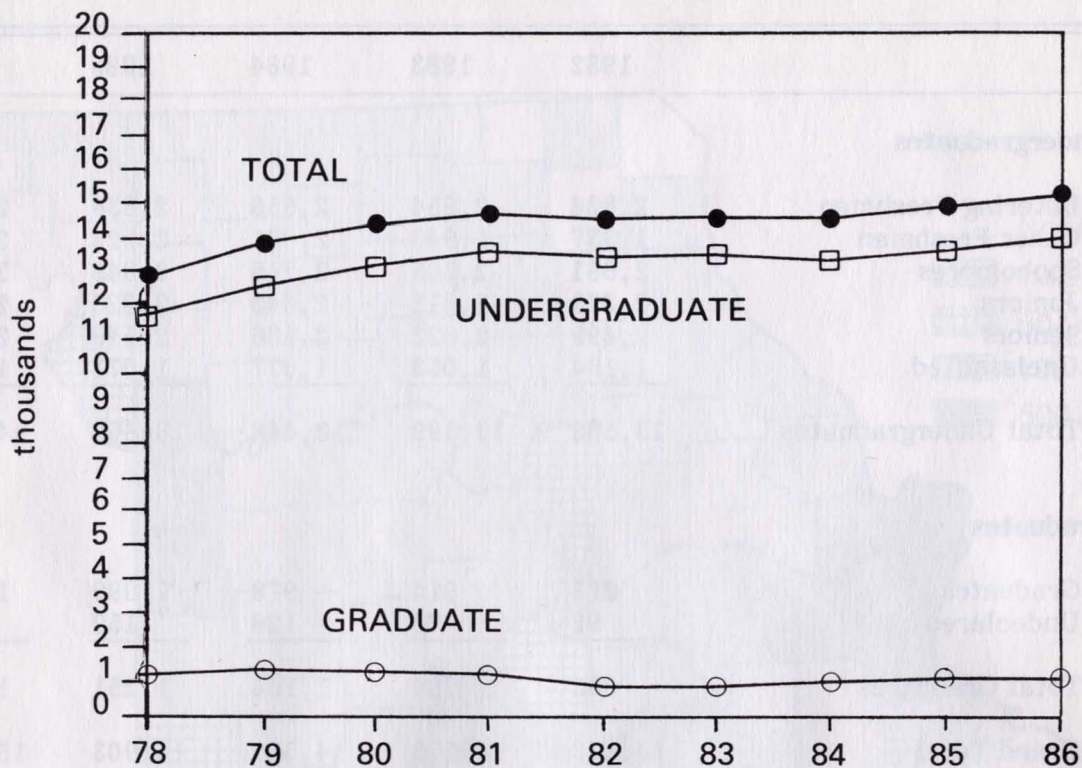
	1977	1978	1979	1980	1981	1982	1983	1984	1985	1986
Enrollment Status										
Full-Time	9117	9007	9595	10271	10188	10124	10334	10244	10456	10778
Part-Time	3634	3861	4354	4380	4645	4349	4239	4308	4447	4455
Student Level										
Undergrad	11584	11737	12662	13476	13666	13508	13589	13448	13652	14012
Graduate	1167	1131	1287	1175	1167	965	984	1104	1251	1221
Sex										
Male	6236	6220	6574	6890	6926	6811	6824	6771	6785	6902
Female	6515	6648	7375	7761	7907	7662	7749	7781	8118	8331
Totals	12751	12868	13949	14651	14833	14473	14573	14552	14903	15233

Note: Includes Off-Campus

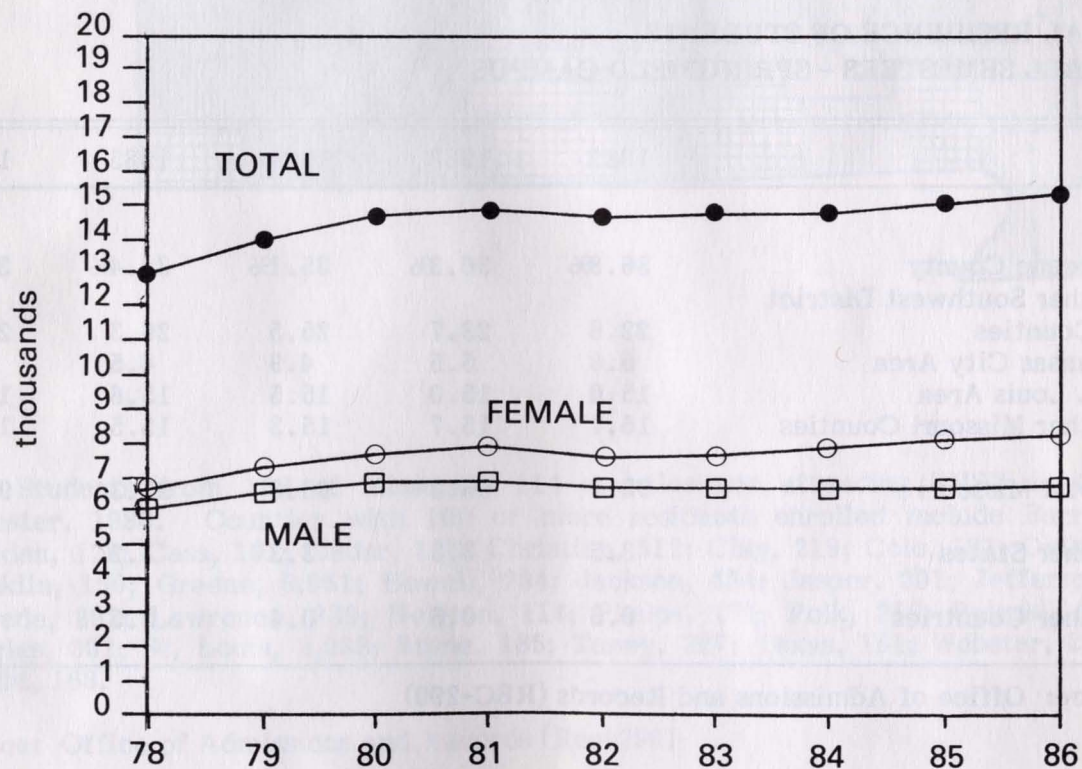
Source: HEGIS 2300-2.3A

**FALL ENROLLMENT BY ENROLLMENT STATUS
SPRINGFIELD CAMPUS**


FALL ENROLLMENT BY STUDENT LEVEL SPRINGFIELD CAMPUS



FALL ENROLLMENT BY SEX SPRINGFIELD CAMPUS



**HEADCOUNT ENROLLMENT BY CLASS
IN FALL SEMESTERS - SPRINGFIELD CAMPUS**

	1982	1983	1984	1985	1986
Undergraduates					
Entering Freshmen	2,824	2,954	2,656	2,836	2,840
Other Freshmen	1,957	1,943	2,091	2,024	2,038
Sophomores	2,691	2,705	2,745	2,849	2,945
Juniors	2,373	2,312	2,343	2,323	2,402
Seniors	2,499	2,622	2,536	2,549	2,678
Unclassified	<u>1,164</u>	<u>1,053</u>	<u>1,077</u>	<u>1,071</u>	<u>1,109</u>
Total Undergraduates	13,508	13,589	13,448	13,652	14,012
Graduates					
Graduates	873	914	978	1,099	1,032
Undeclared	<u>92</u>	<u>70</u>	<u>126</u>	<u>152</u>	<u>189</u>
Total Graduates	965	984	1,104	1,251	1,221
Grand Total	14,473	14,573	14,552	14,903	15,233

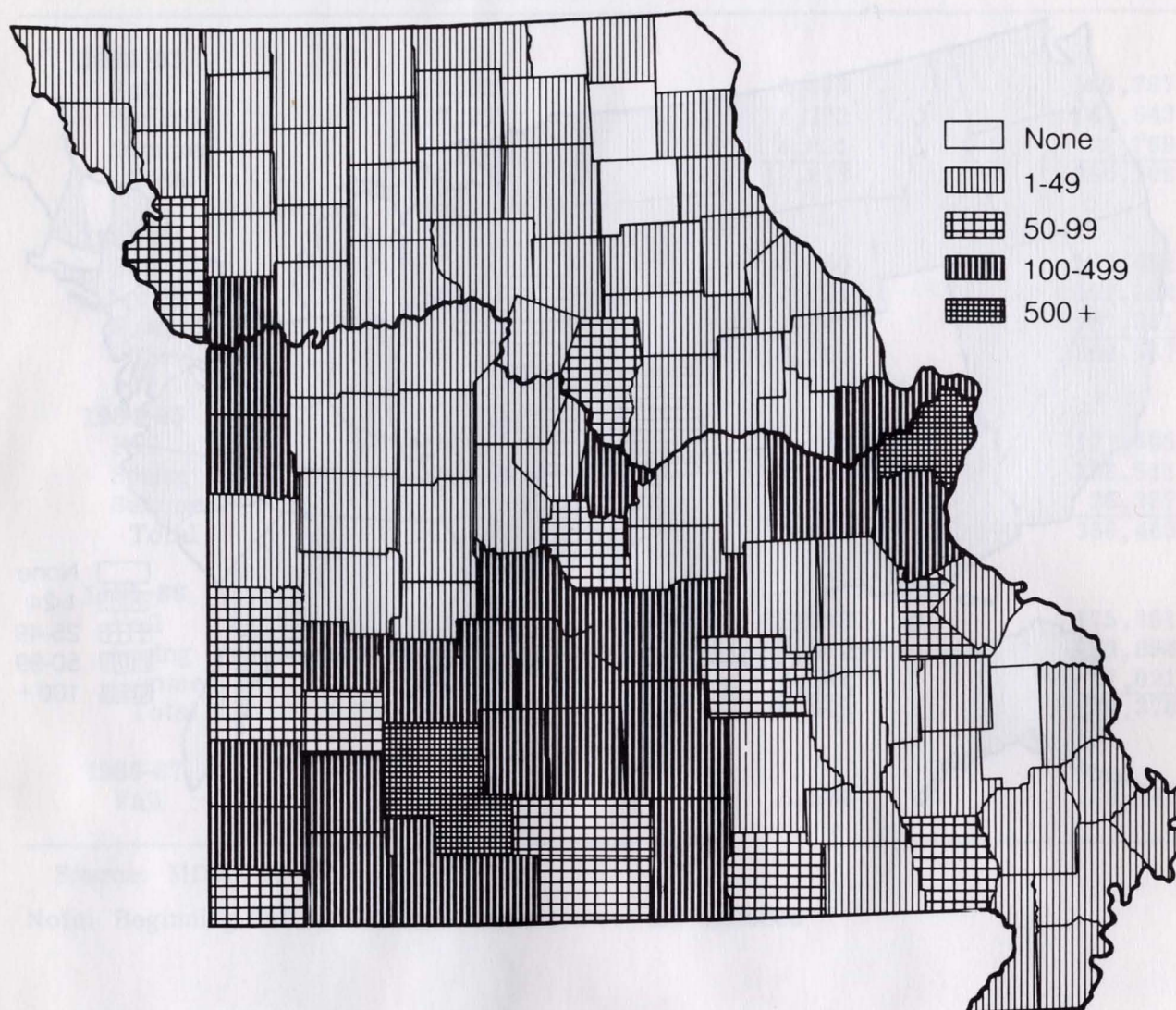
Source: HEGIS 2300-2.3A and IPEDS EF1

**LEGAL RESIDENCE OF STUDENTS
IN FALL SEMESTERS - SPRINGFIELD CAMPUS**

	1982	1983	1984	1985	1986
Greene County	36.8%	36.3%	35.1%	34.4%	33.3%
Other Southwest District Counties	22.6	23.7	25.5	26.3	26.3
Kansas City Area	5.8	5.5	4.9	4.5	4.4
St. Louis Area	15.0	15.0	15.5	15.6	15.6
Other Missouri Counties	15.7	15.7	15.3	15.5	16.6
Total Missouri	95.9	96.2	96.3	96.3	96.2
Other States	3.5	3.3	3.3	3.2	3.1
Other Countries	0.6	0.5	0.4	0.5	0.7

Source: Office of Admissions and Records (REC-290)

ENROLLMENT BY COUNTY OF RESIDENCE, FALL 1986



Students from 108 of Missouri's 114 counties are attending SMSU in the fall semester, 1986. Counties with 100 or more residents enrolled include Barry, 181; Camden, 128; Cass, 101; Cedar, 105; Christian, 512; Clay, 219; Cole, 181; Dallas, 137; Franklin, 150; Greene, 5,051; Howell, 284; Jackson, 454; Jasper, 201; Jefferson, 170; Laclede, 293; Lawrence, 339; Newton, 114; Phelps, 171; Polk, 256; Pulaski, 113; St. Charles, 332; St. Louis, 2,038; Stone, 185; Taney, 227; Texas, 161; Webster, 297; and Wright, 168.

Source: Office of Admissions and Records (Rec-290)

**CREDIT HOUR PRODUCTION BY STUDENT LEVEL
BY SEMESTER - SPRINGFIELD CAMPUS**

	Undergraduate	Graduate	Total
1982-83			
Fall	165,327	4,440	169,767
Spring	157,251	4,292	161,543
Summer	24,708	4,091	28,799
Total	347,286	12,823	360,109
1983-84			
Fall	167,762	4,660	172,422
Spring	156,310	4,794	161,104
Summer	22,772	4,249	27,021
Total	346,844	13,703	360,547
1984-85			
Fall	166,261	5,244	171,505
Spring	153,359	5,152	158,511
Summer	21,522	4,865	26,387
Total	341,142	15,261	356,403
1985-86			
Fall	169,443	5,918	175,361
Spring	157,482	5,512	162,994
Summer	22,429	4,592	27,021
Total	349,354	16,022	365,376
1986-87			
Fall	173,667	5,574	179,241

Source: MDHE 15

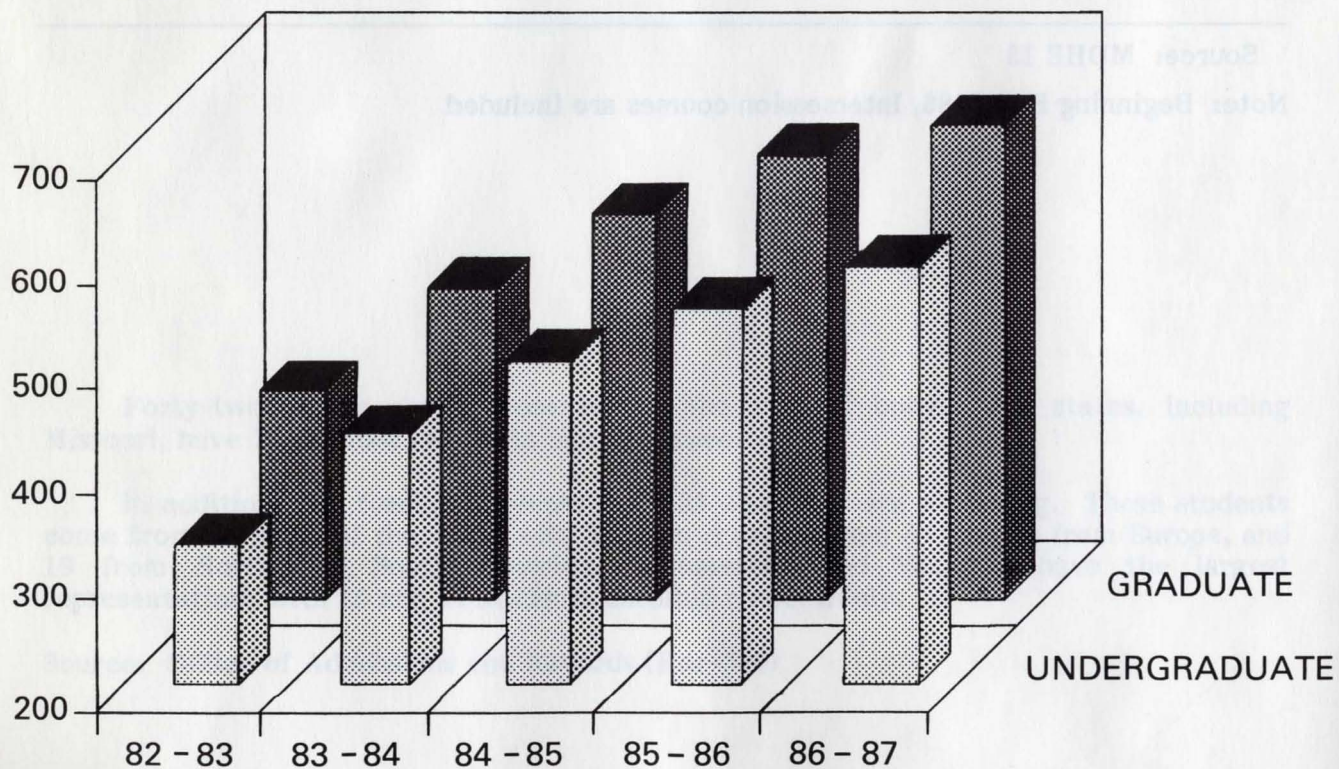
Note: Beginning Fall 1986, Intersession courses are included

SCHEDULE OF INCIDENTAL FEES

	1982-83	1983-84	1984-85	1985-86	1986-87*
Full-Time Cost Per Semester					
<u>Resident</u>					
Undergraduate	\$330	\$432	\$498	\$552	\$600
Graduate	395	492	558	612	660
<u>Nonresident</u>					
Undergraduate	655	864	996	1,104	1,200
Graduate	785	984	1,116	1,224	1,320
Part-Time Cost Per Hour					
<u>Resident</u>					
Undergraduate	32	36	42	46	50
Graduate	38	41	47	51	55
<u>Nonresident</u>					
Undergrad. (1-6 hrs.)	32	36	42	46	50
(7-12 hrs.)	59	72	84	92	100
Graduate (1-6 hrs.)	38	41	47	51	55
(7-12 hrs.)	71	82	94	102	110

Source: University Bulletin

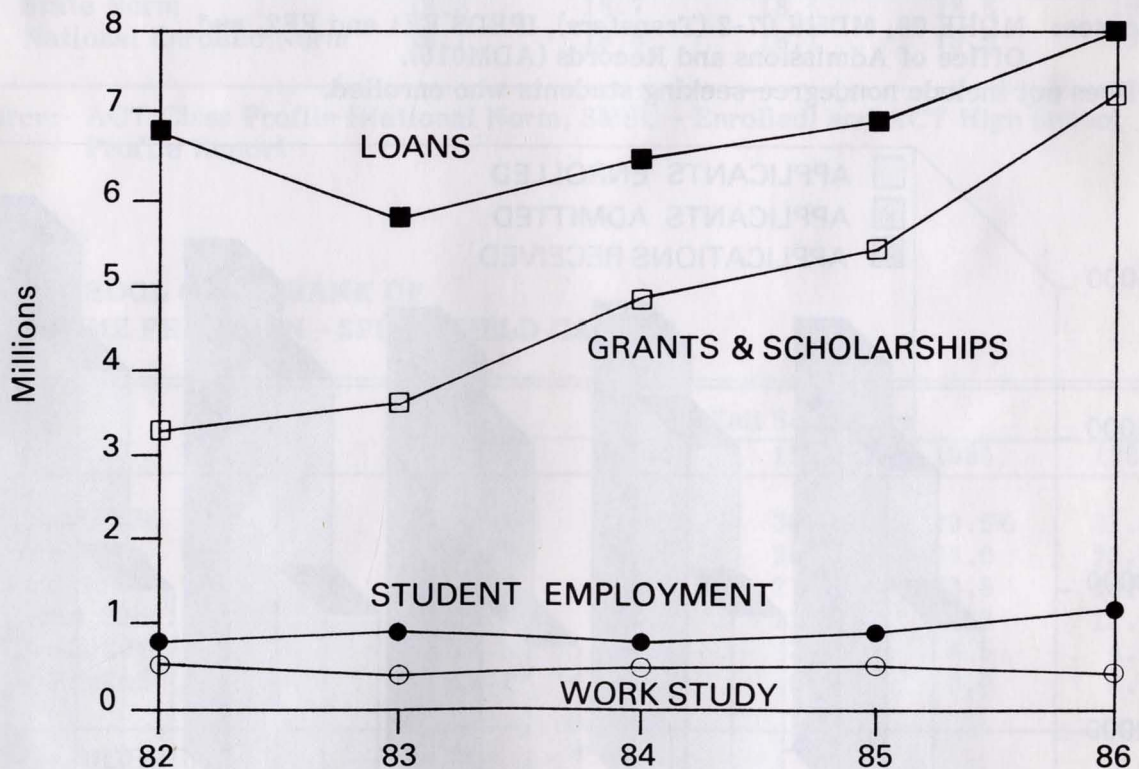
* 13+ hours = Additional \$5 per credit hour resident
 \$10 per credit hour nonresident

RESIDENT FEES PER SEMESTER

STUDENT FINANCIAL AID

Fiscal Year	Grants & Scholarships	Loans	Work Study	Student Employment	Total	% of Total Based on Need
Financial Aid Granted						
1982	3,230,000	6,665,000	564,000	817,000	11,276,000	87.0
1983	3,642,000	5,641,000	494,000	918,000	10,695,000	82.4
1984	4,782,388	6,426,237	506,087	812,629	12,527,341	83.8
1985	5,436,281	6,854,092	521,097	951,604	13,763,074	81.3
1986	7,464,191	7,992,705	467,671	1,335,299	17,259,866	76.2
Students Served						
1982	5,640	3,782	612	1,486	11,520	76.4
1983	5,370	3,455	537	1,668	11,030	72.2
1984	6,022	3,648	582	1,203	11,455	75.6
1985	5,978	3,857	579	1,538	11,952	70.5
1986	6,988	4,226	548	2,075	13,837	65.1

Source: MDHE 14 and Financial Aids Office

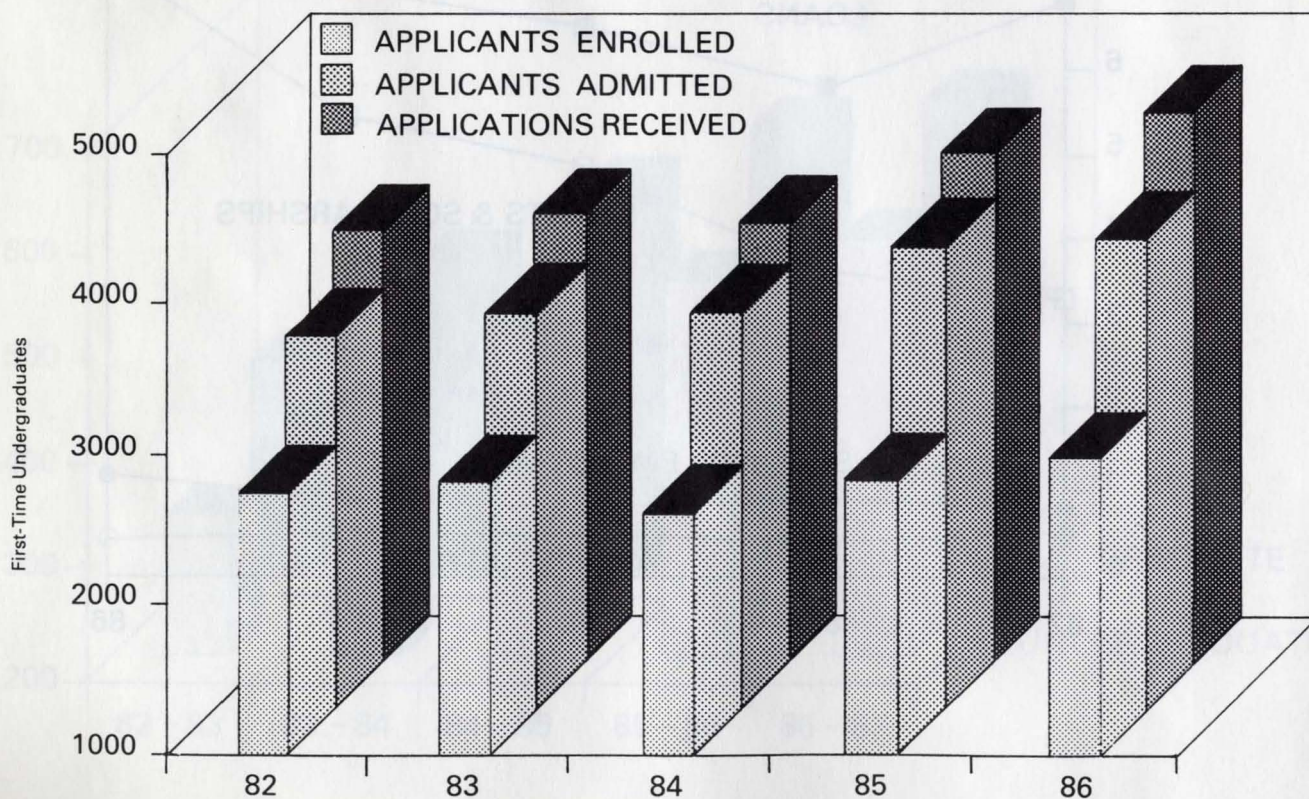
FINANCIAL AID GRANTED BY CATEGORY

ADMISSIONS SUMMARY IN FALL SEMESTERS

Student Category	No. of Applicants	No. Accepted	Percent of Applicants Accepted	No. Actual Enrollments	Percent of Accepted Applicants Enrolled*
First-Time Undergraduate					
1982	3,869	3,502	90.5	2,770	79.1
1983	3,993	3,663	91.7	2,844	77.6
1984	3,952	3,654	92.5	2,629	71.9
1985	4,377	4,091	93.5	2,824	69.0
1986	4,604	4,217	91.6	2,982	70.7
Transfer Undergraduate					
1982	1,237	996	80.5	785	78.8
1983	1,203	998	83.0	791	79.3
1984	1,234	1,030	83.5	779	75.6
1985	1,200	1,017	84.8	773	76.0
1986	1,263	1,050	83.1	821	78.2
Graduate					
1982	321	269	83.8	190	70.6
1983	325	292	89.8	189	64.7
1984	327	296	90.5	211	71.3
1985	410	380	92.7	219	57.6
1986	401	371	92.5	209	56.3

Source: MDHE 08, MDHE 07-2 (Transfers), IPEDS EF1 and EF2, and Office of Admissions and Records (ADM010).

*Does not include nondegree-seeking students who enrolled.



**ACT STANDARD SCORES
FOR FRESHMEN**

	1981-82 N=1978	1982-83 N=1794	1983-84 N=2082	1984-85 N=1812	1985-86 N=2061
English					
SMSU Enrolled Norm	18.0	18.5	18.2	18.8	18.9
State Norm	18.1	18.2	18.1	18.4	18.4
National Enrolled Norm	18.0	18.2	18.1	18.4	18.6
Mathematics					
SMSU Enrolled Norm	16.4	16.9	16.9	17.8	17.1
State Norm	17.4	17.1	16.9	17.4	17.2
National Enrolled Norm	17.3	17.4	17.3	17.6	17.8
Social Studies					
SMSU Enrolled Norm	17.7	18.0	18.1	18.1	18.1
State Norm	17.9	17.9	17.7	17.9	17.7
National Enrolled Norm	17.6	17.8	17.7	17.7	17.9
Natural Sciences					
SMSU Enrolled Norm	21.0	21.1	21.1	21.5	21.6
State Norm	21.4	21.0	21.1	21.3	21.4
National Enrolled Norm	21.3	21.2	21.1	21.3	21.6
Composite					
SMSU Enrolled Norm	18.4	18.7	18.7	19.2	19.1
State Norm	18.8	18.7	18.5	18.8	18.8
National Enrolled Norm	18.7	18.8	18.7	18.9	19.1

Source: ACT Class Profile (National Norm, SMSU - Enrolled) and ACT High School Profile Report

**HIGH SCHOOL CLASS RANK OF
FIRST-TIME FRESHMEN - SPRINGFIELD CAMPUS**

	Fall Semesters				
	1982	1983	1984	1985	1986
Highest 20%	25.1%	28.9%	30.6%	29.5%	31.2%
Fourth 20%	23.9	25.9	26.4	26.0	25.6
Third 20%	17.6	19.5	21.1	20.8	20.9
Second 20%	11.0	12.1	11.8	13.3	12.1
Lowest 20%	3.3	3.7	3.2	4.5	4.2
Not Ranked	19.1	9.8	6.9	6.0	6.0

Source: MDHE 06

**CUMULATIVE GPA BY STUDENT CLASS
IN FALL SEMESTERS**

	Freshman	Sophomore	Junior	Senior	Special	Total Under- graduate	Graduate
1981	2.26	2.57	2.72	2.79	2.92	2.70	3.61
1982	2.24	2.55	2.71	2.82	2.89	2.71	3.63
1983	2.24	2.55	2.69	2.81	2.94	2.71	3.64
1984	2.28	2.58	2.71	2.84	2.90	2.73	3.67
1985	2.33	2.65	2.76	2.87	2.97	2.74	3.70

Source: Office of Admissions and Records (Rec-224)

**PERCENTAGE DISTRIBUTION OF GRADES
IN FALL SEMESTERS**

	1981 Percent	1982 Percent	1983 Percent	1984 Percent	1985 Percent
A (Excellent)	23.2	22.6	22.3	23.2	24.1
B (Superior)	30.9	30.9	30.3	30.0	28.9
C (Satisfactory)	22.9	23.1	22.5	21.9	21.1
D (Minimum Passing)	6.4	6.3	6.7	6.7	6.5
F (Unsatisfactory)	4.4	4.5	4.9	4.7	5.1
I (Incomplete)	1.0	1.1	.9	.8	1.1
N (Drop)	10.6	10.9	11.8	12.0	12.6
V (Audit)	.4	.5	.5	.5	.4
Z (Deferred - grad.)	.1	.1	.1	.1	.1
Total	100.0	100.0	100.0	100.0	100.0

Source: Office of Admissions and Records (Rec-230)

NUMBER OF DEPARTMENTAL MAJORS BY COLLEGE*
FALL SEMESTERS, 1985 AND 1986

College & Department	1985	1986	College & Department	1985	1986
Arts & Letters			Humanities & Social Sciences		
Art & Design	319	343	Economics	71	73
Communications	690	735	History	142	153
English	235	230	Pol. Science & Philosophy	152	152
Foreign Languages	48	42	Religious Studies	25	25
Music	130	141	Soc., Anthropol., Social Work	211	238
Theatre & Dance	100	120	Total Hum. & Soc. Sci.	601	641
Total Arts & Letters	1,522	1,611			
Interdisciplinary Studies	72	89	Science & Mathematics		
Business Administration			Biology	359	347
Accounting	787	776	Biomedical Sciences	133	123
Computer Info. Systems	415	320	Chemistry	112	98
Finance & Gen. Bus.	840	879	Computer Science	212	199
Management	470	452	Geosciences	192	155
Marketing	374	504	Mathematics	293	328
Off. Adm. & Bus. Educ.	233	222	Physics & Astronomy	65	62
M.B.A.	87	98	Total Science & Math	1,366	1,312
Total	3,206	3,251	Nondegree & Unclass. Grad.	201	192
Education & Psychology			Undeclared Undergrad.	3,041	3,201
Educational Administration	232	187			
Elem., Reading, & Spec. Ed.	974	1,001	Total		
Guidance & Counseling	186	167		13,957	14,131
Psychology	373	397			
Second. Educ. & Found.	98	109			
Total Educ. & Psych.	1,863	1,861			
Health & Applied Sciences					
Agriculture	388	331			
Communication Disorders	122	81			
Health, P.E., & Rec.	321	326			
Home Economics	361	376			
Industrial Technology	609	574			
Nursing	284	285			
Total Health & App. Sci.	2,085	1,973			

*Includes on and off campus and on and off schedule, with the exception of special students.

Source: Office of Planning and Policy (EARL 0081 and EARL 9274)

Degree Programs and Degrees Conferred

HIGHLIGHTS

- * The University offers baccalaureate degrees in 89 degree programs and master's degrees in 28 disciplines.
- * Majors may be selected from a total of 102 different degree programs. The University also provides pre-professional programs for students planning to enter fields such as dentistry, engineering, journalism, law, medicine, theology, and other professional areas.
- * Degrees currently offered include two associate degrees, six baccalaureate degrees, five master's degrees, and an educational specialist degree.
- * Eighty-six percent of all degrees awarded in fiscal year 1986 were at the baccalaureate level.



CURRENT DEGREE PROGRAMS
1986-1987

Program Name	Degree
Accounting	BS, MA
Agricultural Business	BS
Agronomy	BS
Animal Science	BS
Antiquities	BA
Art	AA, BA, BFA, BSEd
Basic Business	BSEd
Biology	BA, BS, BSEd, MS, MEd
Business	MSEd
Business Administration	MBA
Cartography/Map Technology	BS
Chemical Technology	AS
Chemistry	BS, BSEd, MEd
Communications	BA, BS, MA
Communication Disorders	BS, MA
Computer Information Systems	BS
Computer Science	BS
Conservation Education	BS
Dance	BFA
Design	BFA
Dietetics	BS
Earth Science	BSEd, MEd
Economics	BA, BS
Educational Administration	MSEd, EdS
Electronic Media	BS
Elementary Education	BSEd, MEd
Engineering Physics	BS
English	BA, BSEd, MA, MEd
Finance	BS
Fire Science	BS
French	BA, BS, BSEd
General Agriculture	BS
General Business	BS
General Studies	AA
Geography	BA, BS, MEd
Geology	BS
German	BA, BS, BSEd
Gerontology	BS
Guidance and Counseling	MS
History	BA, BSEd, MA, MEd
Home Economics	BS, BSEd
Home Economics/Child and Family Development	BS
Home Economics/Clothing and Textiles	BS
Home Economics/Foods and Nutrition	BS
Home Economics/Home Management	BS

Program Name	Degree
Home Economics/Hospitality-Restaurant Admin.	BS
Home Economics/Housing and Interior Design	BS
Horticulture	BS
Industrial Education	BSEd, MSED
Industrial Management	BS
Industrial Technology/Construction	BS
Industrial Technology/Drafting and Design	BS
Industrial Technology/Electricity-Electronics	BS
Industrial Technology/Electro-Mechanical	BS
Industrial Technology/Power and Transportation	BS
Industrial Technology/Printing	BS
Latin	BA, BSEd
Management	BS
Manufacturing Technology	BS
Marketing	BS
Mathematics	BA, BS, BSEd, MA, MSED
Medical Technology	BS
Music	BA, BSEd, MSED
Music/Performance	BM
Music/Theory and Composition	BM
Natural Science & Mathematics	MSED
Nurse Anesthesia	BS
Nursing	ASN, BSN
Office Administration	BS, BSEd
Office Administration/Medical	AS
Philosophy	BA
Physical Education	BSEd
Physics	BA, BS, BSEd, MSED
Political Science	BA, BS, MSED
Psychology	BA, BS
Public Administration	BA, BS, MPA
Radiologic Technology	BS
Reading	MSED
Recreation and Leisure Studies	BS
Religious Studies	BA
Resource Planning	MS
Respiratory Therapy	BS
Social Science	MSED
Social Studies	BSEd
Social Work	BS
Sociology	BA, BS
Science	BSEd
Spanish	BA, BS, BSEd
Spanish/Latin American Studies	BA, BS, BSEd
Special Education/Learning Disabilities	BSEd, MSED
Special Education/Mental Retardation	BSEd, MSED
Speech and Theatre	BSEd, MSED

Program Name	Degree
Technical Physics	BS
Theatre	MA
Theatre and Interpretation	BA, BFA
Urban and Regional Planning	BS
Vocational Agriculture	BSEd
Vocational Home Economics	BSEd
Wildlife Conservation and Management	BS
Writing	BA

Source: University Bulletin

DEGREES CURRENTLY OFFERED

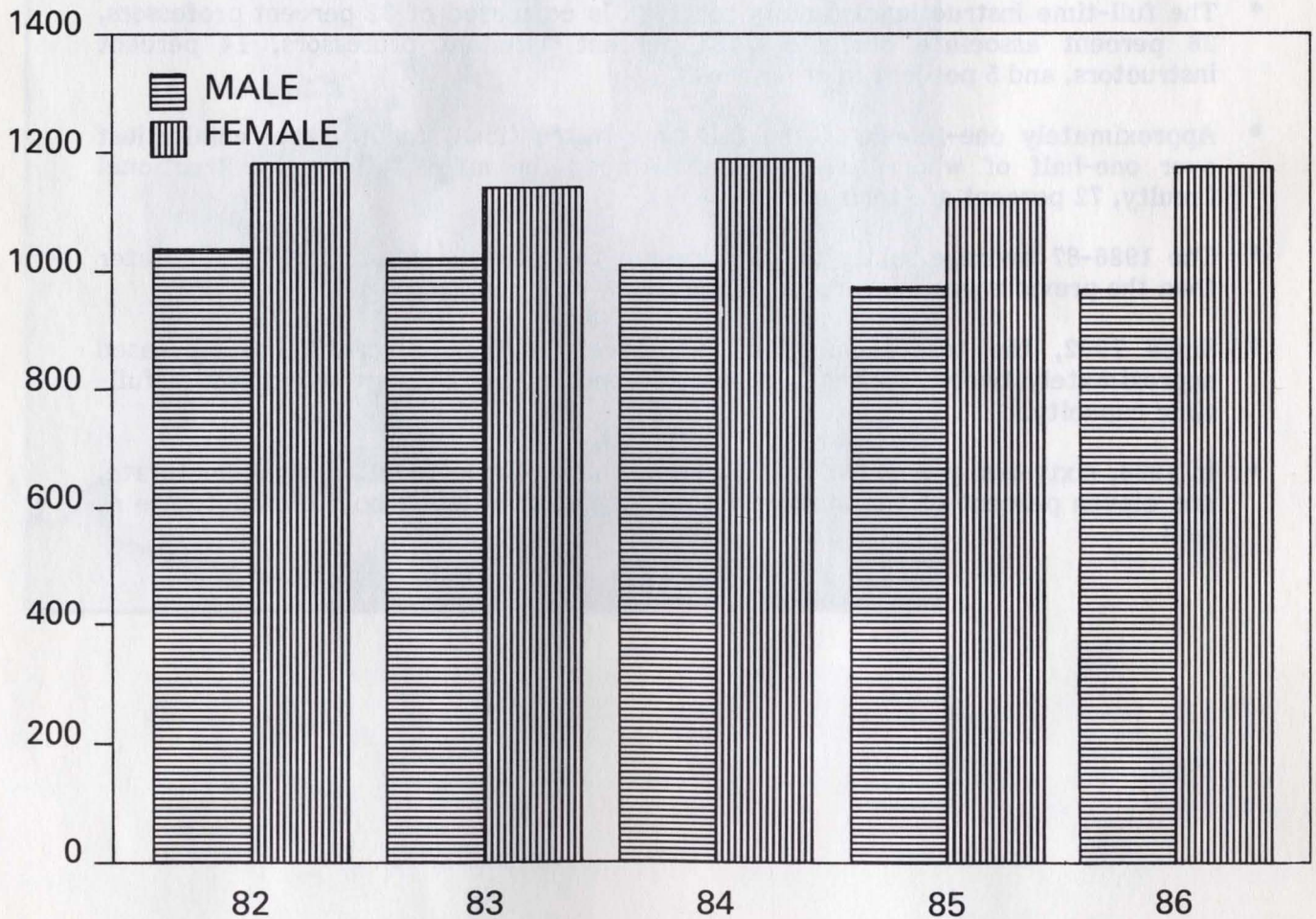
AA	Associate of Arts
AS	Associate of Science
BA	Bachelor of Arts
BFA	Bachelor of Fine Arts
BM	Bachelor of Music
BS	Bachelor of Science
BSEd	Bachelor of Science in Education
BSN	Bachelor of Science in Nursing
MA	Master of Arts
MBA	Master of Business Administration
MPA	Master of Public Administration
MS	Master of Science
MSEd	Master of Science in Education
EdS	Educational Specialist

NUMBER OF DEGREES CONFERRED

Fiscal Year	By Level				By Sex		Total Degrees
	Associate	Bachelor's	Master's	Specialist	Male	Female	
1982	31	1,895	264	25	1,035	1,180	2,215
1983	31	1,899	215	19	1,022	1,142	2,164
1984	21	1,961	200	16	1,010	1,188	2,198
1985	41	1,829	199	25	974	1,120	2,094
1986	40	1,835	222	34	957	1,174	2,131

Source: NCES 2300-2.1A-1

DEGREES CONFERRED BY SEX



Faculty and Staff

HIGHLIGHTS

- * The full-time instructional faculty for 1986 is composed of 32 percent professors, 26 percent associate professors, 23 percent assistant professors, 14 percent instructors, and 5 percent in other ranks.
- * Approximately one-fourth of the full-time instructional faculty are female; just over one-half of whom have tenure. Among the male, full-time instructional faculty, 72 percent are tenured.
- * The 1986-87 average salary of the nine-month instructional staff is 7.5% greater than the previous year's average. Increases by rank ranged from 4.9% to 7.9%.
- * Since 1982, the total number of employees at the University has increased approximately twelve percent. Almost 80 percent of them are working in a full-time capacity.
- * In 1986, sixty-two percent of the full-time instructional faculty hold a doctorate, and eleven percent of the managerial and professional staff hold the doctorate as well.



**FULL-TIME INSTRUCTIONAL FACULTY BY
RANK, SEX, AND TENURE STATUS**

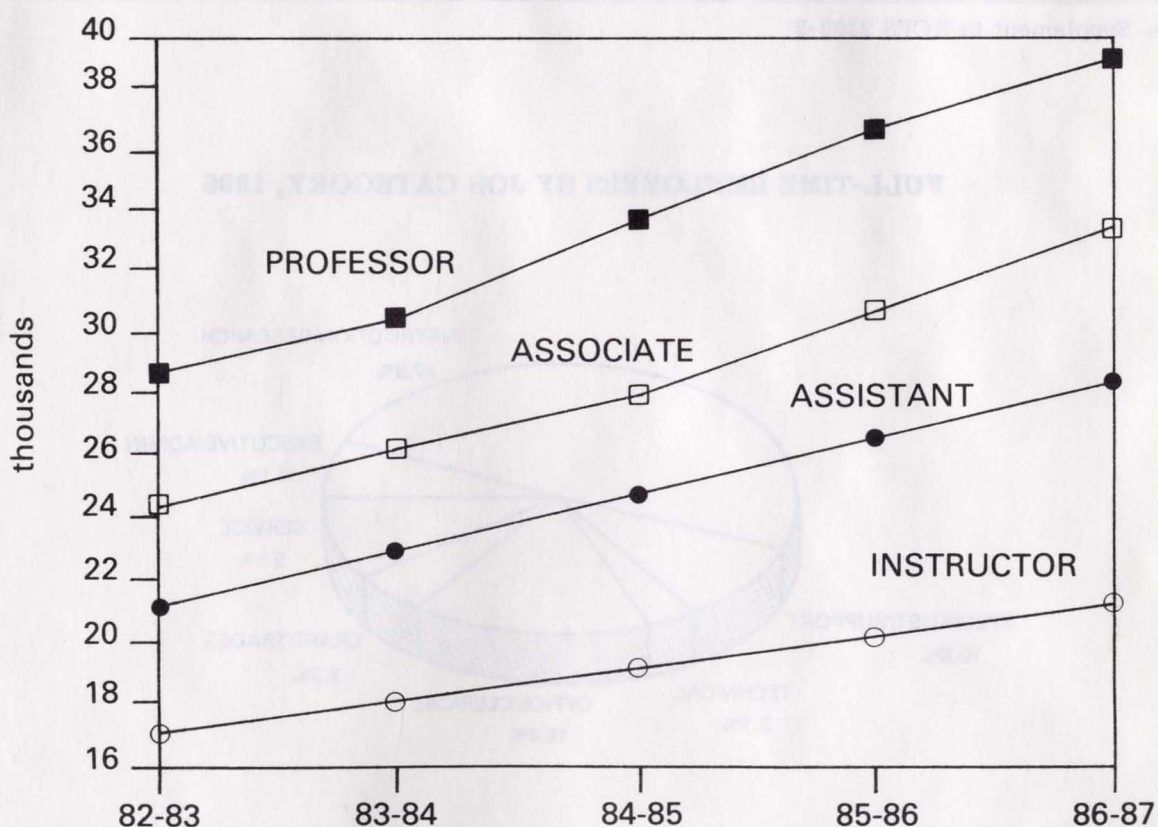
Rank	1982		1983		1984		1985		1986	
	No.	Tenured	No.	Tenured	No.	Tenured	No.	Tenured	No.	Tenured
Professor										
Men	151	151	161	159	162	157	166	163	170	166
Women	14	12	17	15	16	15	16	14	15	14
Total	165	163	178	174	178	172	182	177	185	180
Assoc. Prof.										
Men	88	77	88	74	98	84	104	91	114	96
Women	25	23	25	23	29	25	32	29	33	30
Total	113	100	113	97	127	109	136	120	147	126
Asst. Prof.										
Men	82	28	79	31	79	32	74	28	81	33
Women	39	22	37	22	37	20	32	18	49	20
Total	121	50	116	53	116	52	106	46	130	53
Instructor										
Men	51	12	48	11	39	8	45	8	46	10
Women	51	12	49	12	40	11	41	12	34	11
Total	102	24	97	23	79	19	86	20	80	21
Lecturer										
Men	11	-	13	-	15	-	17	-	8	-
Women	10	-	11	-	15	-	16	-	14	-
Total	21	-	24	-	30	-	33	-	22	-
Other										
Men	1	-	1	-	3	-	4	-	6	-
Women	1	-	-	-	-	-	-	-	1	-
Total	2	-	1	-	3	-	4	-	7	-
Total										
Men	384	268	390	275	396	281	410	290	425	305
Women	140	69	139	72	137	71	137	73	146	75
Total	524	337	529	347	533	352	547	363	571	380

Source: HEGIS 2300-3

AVERAGE SALARY OF NINE-MONTH INSTRUCTIONAL STAFF BY RANK

Academic Rank	1982-83	1983-84	1984-85	1985-86	1986-87
Professor	28,579	30,420	33,408	36,865	39,284
Associate Professor	24,422	26,220	28,145	30,871	33,305
Assistant Professor	21,077	22,915	24,550	26,309	27,910
Instructor	17,100	18,129	19,420	20,423	21,417
Lecturer	17,315	17,635	18,544	19,608	20,828
All Ranks Combined	23,016	24,783	26,956	29,268	31,468

Source: HEGIS 2300-3

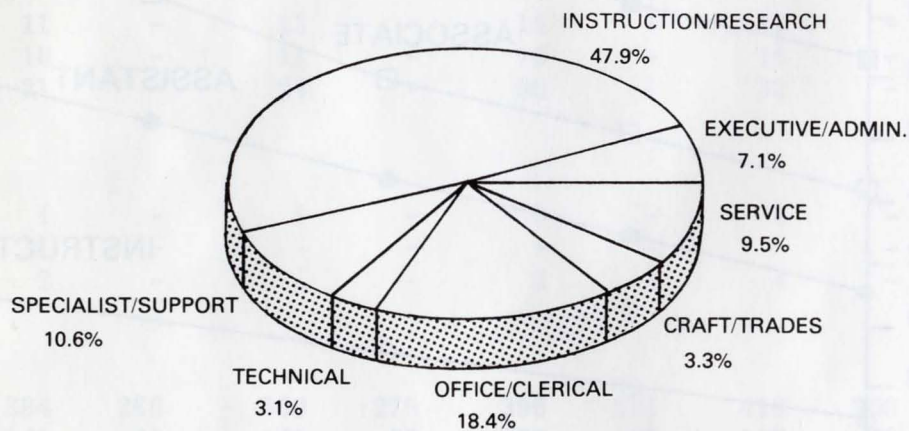


NUMBER OF FULL-TIME AND PART-TIME EMPLOYEES BY MANPOWER RESOURCE CATEGORY

Manpower Resource Category	1982		1983		1984		1985		1986	
	Full- Time	Part- Time	Full- Time	Part- Time	Full- Time	Part- Time	Full- Time	Part- Time	Full- Time	Part- Time
Exempt										
Executive/Admin	89	-	78	-	78	-	84	-	90	-
Instr./Research	564	157	571	156	572	164	581	169	606	189
Instr./Res.Asst.	-	90	-	106	-	115	-	136	-	156
Spec./Support	85	5	98	5	112	5	127	3	134	6
Total Exempt	738	252	747	267	762	284	792	308	830	351
Nonexempt										
Technical	40	-	40	-	41	-	40	-	39	-
Office/Clerical	223	1	225	-	234	-	231	-	233	-
Craft/Trades	41	-	42	-	43	-	40	-	42	-
Service	147	-	142	-	148	-	121	-	120	-
Total Nonexempt	451	1	449	-	466	-	432	-	434	-
Grand Total	1,189	253	1,196	267	1,228	284	1,224	308	1,264	351
FTE	1,189	106.20	1,196	118.91	1,228	126.08	1,224	142.85	1,264	159.49

Source: Supplement to NCES 2300-3

FULL-TIME EMPLOYEES BY JOB CATEGORY, 1986



HIGHEST DEGREE HELD BY FACULTY AND PROFESSIONAL STAFF - 1986

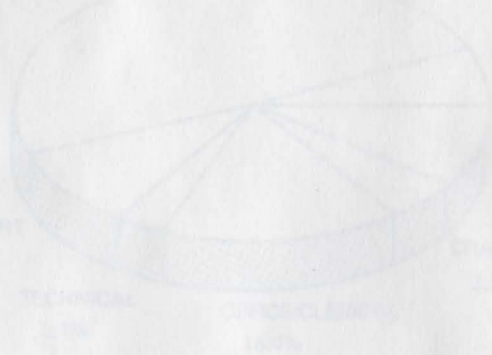
Category	Doctorate	Profes- sional	Master's/ Specialist	Bachelor's or Less	Total
Full-Time Instructional Faculty	352	7	205	7	571
Executive/Administrative Managerial	19	2	28	41	90
Specialist/Support/ Professional	6	7	54	67	134
Part-Time Faculty	<u>17</u>	<u>12</u>	<u>100</u>	<u>60</u>	<u>189</u>
Total	394	28	387	175	984

Source: Basic Personnel Data (EARL 0057)

Financial Resources

HIGHLIGHTS

- * In fiscal year 1986, state appropriations and payments constituted 52.2 percent of current funds revenues. Student fees accounted for 21.9 percent; and another 9.4 percent came from gifts, grants, and contracts.
- * The largest expenditure classification in the current funds expenditures is instruction, which has been approximately forty percent of total expenditures for the past five fiscal years.
- * Educational and general funds for fiscal year 1986 totaled \$58,592,280 with personal services consuming 68 percent of the total. Operating costs required 28 percent of the funds, and the remaining four percent was used for equipment purchases and maintenance.





**CURRENT FUNDS REVENUES
FISCAL YEAR 1986**

52.2%	STATE APPROPRIATIONS AND PAYMENTS	\$36,547,314
21.9%	STUDENT FEES	\$15,366,642
8.2%	FEDERAL GRANTS AND CONTRACTS	\$5,720,002
1.2%	STATE AND PRIVATE GRANTS AND CONTRACTS	\$853,712
0.9%	SALES AND SERVICES—EDUCATIONAL ACTIVITIES	\$628,307
11.7%	AUXILIARY ENTERPRISES	\$8,188,181
3.9%	OTHER SOURCES	\$2,734,116

TOTAL \$70,038,274

CURRENT FUNDS REVENUES

Revenue Classification	FY82	FY83	FY84	FY85	FY86
Student Fees	\$ 7,602,667	\$ 9,754,975	\$12,045,122	\$13,434,518	\$15,366,642
State Appropriations - Gen. Revenue	21,984,949	23,138,521	25,529,777	27,814,807	35,490,066
State Appropriations - Staff Benefits	1,967,178	2,293,348	2,617,520	2,798,346	1,057,248
Federal Grants and Contracts	3,129,489	3,199,539	3,968,275	4,532,432	5,720,002
State Grants and Contracts	187,636	207,799	191,783	194,667	365,446
Private Gifts/Grants/Contracts	371,090	349,601	282,464	503,643	488,266
Sales and Services, Educational Dept.	308,952	400,537	378,177	564,287	628,307
Sales and Services, Aux. Enterprises	5,150,822	5,528,843	5,772,156	6,544,510	8,188,181
Other Sources	2,150,993	1,989,460	2,306,767	2,723,115	2,734,116
Total Current Funds Revenues	\$42,853,776	\$46,862,623	\$53,092,041	\$59,110,325	\$70,038,274

Source: SMSU Financial Reports (Baird, Kurtz, & Dobson)

**CURRENT FUNDS EXPENDITURES
FISCAL YEAR 1986**

39.7%	INSTRUCTION	\$26,672,884
2.8%	RESEARCH AND PUBLIC SERVICE	\$1,887,967
10.2%	ACADEMIC SUPPORT	\$6,862,482
9.3%	STUDENT SERVICES	\$6,282,352
7.8%	INSTITUTIONAL SUPPORT	\$5,242,351
7.4%	OPERATION AND MAINTENANCE OF PLANT	\$5,003,115
9.9%	SCHOLARSHIPS AND FELLOWSHIPS	\$6,641,129
10.3%	AUXILIARY ENTERPRISES	\$6,935,958
2.5%	MANDATORY TRANSFERS	\$1,709,869

TOTAL \$67,238,107

CURRENT FUNDS EXPENDITURES

Expenditure Classification	FY82	FY83	FY84	FY85	FY86
Expenditures & Mandatory Transfers					
<u>Educational & General</u>					
Instruction	\$17,627,249	\$18,866,912	\$20,674,062	\$23,043,478	\$26,672,884
Research	996,952	1,068,991	959,051	1,203,475	1,356,109
Public Service	282,724	238,540	310,522	589,287	531,858
Academic Support	4,414,766	4,791,770	5,360,347	5,767,649	6,862,482
Student Services	3,706,493	4,166,085	4,676,476	5,052,979	6,282,352
Institutional Support	2,995,451	3,523,329	4,238,655	4,992,521	5,242,351
Operation & Maintenance of Plant	3,313,091	3,558,132	3,915,002	4,049,562	5,003,115
Scholarships & Fellowships	2,998,962	3,246,101	4,285,923	4,994,292	6,641,129
Educational & General Expend.	36,335,688	39,459,860	44,420,038	49,693,243	58,592,280
Mandatory Transfers	-	-	-	-	45,000
Total Educational & General					
Expend. & Mandatory Transfers	36,335,688	39,459,860	44,420,038	49,693,243	58,637,280
<u>Auxiliary Enterprises</u>					
Expenditures	5,182,398	5,400,237	5,907,589	6,605,002	6,935,958
Mandatory Transfers	1,145,318	1,265,138	1,133,543	1,114,525	1,664,869
Total Auxiliary Enterprises					
Expend. & Mandatory Transfers	6,327,716	6,665,375	7,041,132	7,719,527	8,600,827
Total Expend. & Mandatory Transfers	\$42,663,404	\$46,125,235	\$51,461,170	\$57,412,770	\$67,238,107

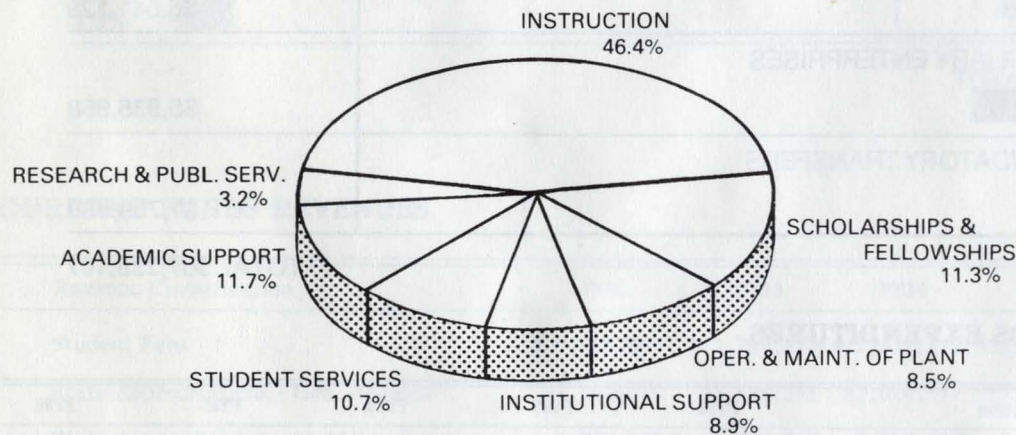
Source: SMSU Financial Reports (Baird, Kurtz, & Dobson)

**EDUCATIONAL AND GENERAL FUNDS
FISCAL YEAR 1986
(RESTRICTED & UNRESTRICTED)**

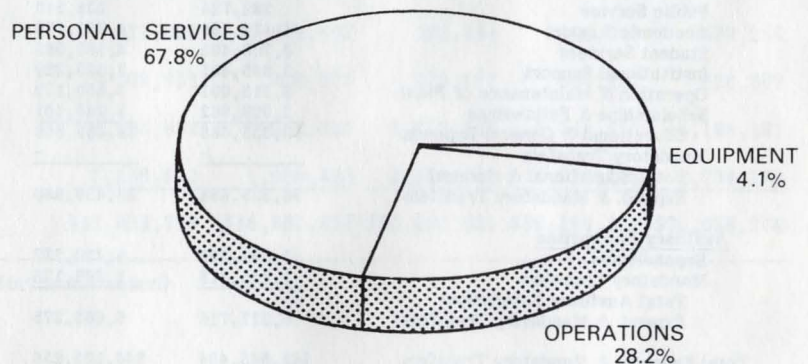
	Personal Services	Operations	Equipment Purchase & Maint.	Totals
Instruction	\$23,426,028	\$ 2,154,880	\$ 1,091,976	\$26,672,884
Research	1,014,784	278,915	62,410	1,356,109
Public Service	224,222	294,072	13,564	531,858
Academic Support	4,173,951	2,213,425	475,106	6,862,482
Student Services	3,895,028	2,292,761	94,563	6,282,352
Instit. Support	4,392,448	456,323	393,580	5,242,351
Oper./Maint. of Plant	2,558,432	2,195,097	249,586	5,003,115
Schol./Fellowships	21,753	6,619,376	-	6,641,129
	<u>\$39,706,646</u>	<u>\$16,504,849</u>	<u>\$ 2,380,785</u>	<u>\$58,592,280</u>

Source: SMSU Financial Reports (Baird, Kurtz, & Dobson)

E & G FUNDS BY PROGRAM



E & G FUNDS BY EXPENDITURE CATEGORY



EDUCATIONAL AND GENERAL FUNDS

	Budgeted FY87			Requested FY88		
	Unrestricted	Restricted	Total	Unrestricted	Restricted	Total
Revenues						
Tuition and Fees	\$15,349,480	\$ -	\$15,349,480	\$16,495,335	\$ -	\$16,495,335
Fed. Grants & Contracts	350,746	5,353,980	5,704,726	350,746	5,353,980	5,704,726
State Appropriations	37,784,695	-	37,784,695	43,470,066	-	43,470,066
State Grants & Contracts	144,490	210,086	354,576	144,490	210,086	354,576
Priv. Gifts/Grants/Contracts	90,195	385,911	476,106	90,195	385,911	476,106
Investment Income	707,513	-	707,513	707,513	-	707,513
Sales & Services	667,292	-	667,292	667,292	-	667,292
Athletic Income	-	-	-	-	-	-
Other Sources	1,144,939	87,120	1,232,059	1,144,939	87,120	1,232,059
Transfers	-	-	-	-	-	-
	56,239,350	6,037,097	62,276,447	63,070,576	6,037,097	69,107,673
Expenditures						
Instruction	\$29,943,133	\$ 267,780	\$30,210,913	\$33,856,054	\$ 267,780	\$34,123,834
Research	1,238,941	190,568	1,429,509	1,300,563	190,568	1,491,131
Public Service	523,643	6,133	529,776	800,998	6,133	807,131
Academic Support	5,999,613	321,563	6,321,176	6,967,750	321,563	7,289,313
Student Services	5,730,592	112,878	5,843,470	6,002,462	112,878	6,115,340
Institutional Support	5,754,259	14,832	5,769,091	6,383,426	14,832	6,398,258
Operation/Maint. of Plant	5,048,599	58,350	5,106,949	5,903,024	58,350	5,961,374
Scholarships & Fellowships	1,784,903	5,031,676	6,816,579	1,856,299	5,031,676	6,887,975
Transfers	-	33,317	33,317	-	33,317	33,317
	56,023,683	6,037,097	62,060,780	63,070,576	6,037,097	69,107,673

Source: FY88 Legislative Budget Request

Facilities

HIGHLIGHTS

- * The Springfield campus contains 22 educational and general buildings and 12 auxiliary enterprises facilities. Recent additions are Hammons House and the Honors House, both residential facilities.
- * Classroom space on the Springfield campus is utilized at a higher level during the mid-morning and early afternoon hours than the currently accepted standard for space utilization.
- * With the addition of the two residential facilities, student service activities claim 54.3 percent of the assignable square footage on the campus. Instructional and research activities are assigned 29.1 percent.
- * Almost 21.5 percent (3,267) of the student enrollment in fall 1986 were living in university housing. Just over two-thirds were freshmen.
- * A one-time state appropriation of \$907,293 was given to the Meyer Library. This money allowed the library staff to purchase additional resource materials as well as begin the implementation of a computerized catalog and acquisition system.



1975	1,000,000	2,000,000	10,000,000	40,000,000
1976	1,000,000	2,000,000	10,000,000	40,000,000
1977	1,000,000	2,000,000	10,000,000	40,000,000
1978	1,000,000	2,000,000	10,000,000	40,000,000
1979	1,000,000	2,000,000	10,000,000	40,000,000
1980	1,000,000	2,000,000	10,000,000	40,000,000
1981	1,000,000	2,000,000	10,000,000	40,000,000
1982	1,000,000	2,000,000	10,000,000	40,000,000
1983	1,000,000	2,000,000	10,000,000	40,000,000
1984	1,000,000	2,000,000	10,000,000	40,000,000

Source: Division of Financial Services and Statistics, Connecticut's Report (FALL 2008).

1975 1976 1977 1978 1979 1980 1981 1982 1983 1984

1975 1976 1977 1978 1979 1980 1981 1982 1983 1984

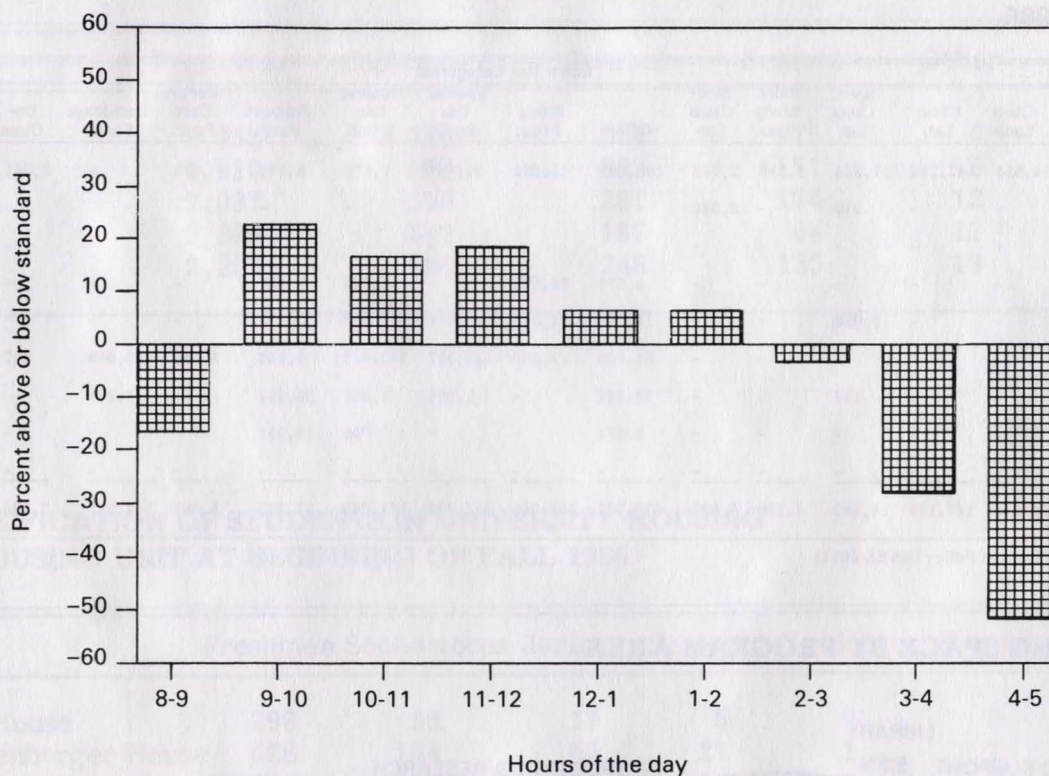
Report prepared by the Department of Health Services and Statistics, Connecticut's Report (FALL 2008).

MAJOR PHYSICAL FACILITIES RESOURCE INFORMATION
GENERAL BUILDING CHARACTERISTICS - SPRINGFIELD CAMPUS
FALL 1986

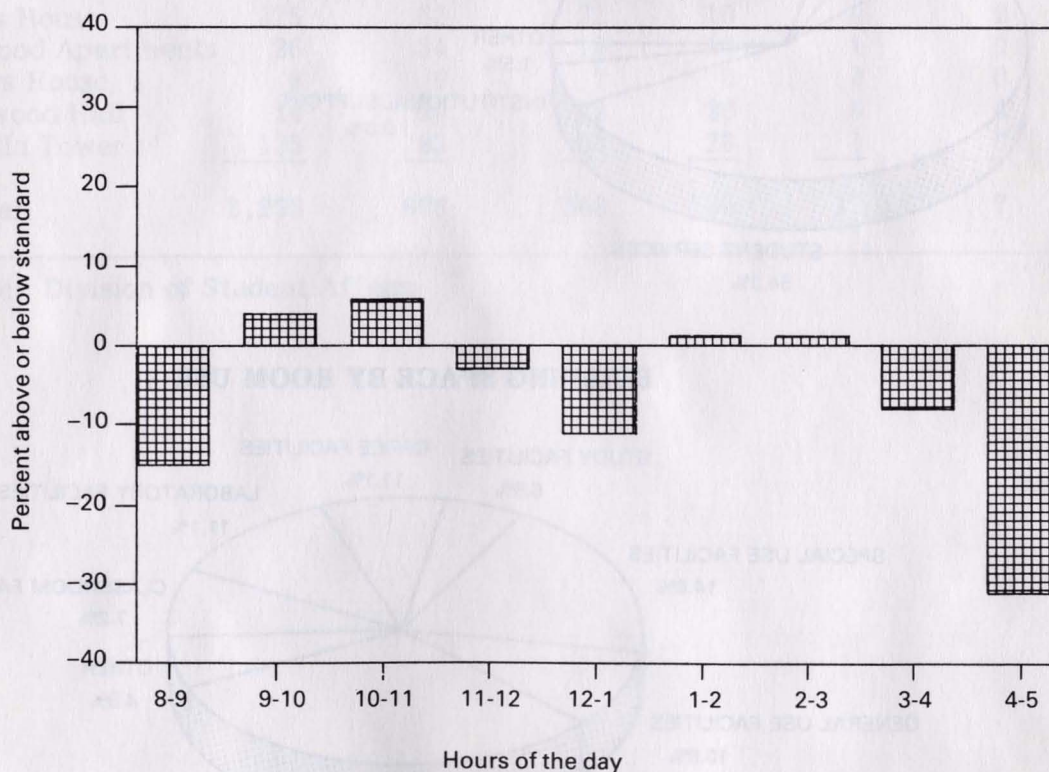
Building	Date of Completed Const.	Original Cost	Present Book Value	Gross Square Feet	Assign. Square Feet
Educ. & Gen. Serv. Facilities					
Allied Health Building	1940	N/A	1,575,000	128,261	96,125
Art Annex	1948	\$ 113,666	\$ 190,506	18,034	14,560
Carrington Hall	1908	201,393	2,920,917	96,765	56,767
Central Stores & Maint.	1977	495,893	495,893	30,175	27,046
Cheek Hall	1955	599,982	3,665,814	87,066	49,067
Craig Hall	1967	1,724,800	1,807,236	86,320	42,188
Duane Meyer Library	1980	6,099,900	6,099,900	118,633	98,560
Ellis Hall	1959	826,991	871,349	49,268	25,605
Forsythe Athletic Facil.	1980	733,435	733,435	18,626	12,458
Greenhouse	1958	39,272	40,152	4,339	3,959
Greenwood Lab. School	1966	857,246	1,099,342	63,949	48,210
Hill Hall	1924	300,204	1,404,151	63,384	37,578
Karls Hall	1958	290,420	561,649	22,330	14,421
Kemper Hall	1976	2,569,818	2,569,818	68,402	52,483
Library Annex	1982	825,075	825,075	26,536	17,730
McDonald Arena	1940	443,091	972,601	87,262	52,167
Power Plant	1908	21,000	1,092,890	10,364	4,147
Pummill Hall	1957	641,757	773,843	39,984	25,988
Siceluff Hall	1927	305,375	2,020,194	61,695	33,350
Temple Hall	1971	3,601,473	3,702,116	130,184	70,683
Taylor Health Clinic	1971	297,297	299,929	10,098	6,053
Warehouse Facility	1971	38,595	38,595	10,024	9,887
Aux. Enterprises Facilities					
Blair-Shannon	1966	3,183,313	3,872,845	183,011	124,426
Baker Bookstore	1971/78	653,360	656,513	20,466	19,854
Campus Union	1951	700,214	3,045,788	109,165	80,930
Dogwood Apartments	1968/69	N/A	500,184	26,277	20,777
Freudenberger	1959	N/A	2,220,151	161,524	109,563
Hammons House	1986	N/A	N/A	155,000	105,000
Hammons Student Center	1976	5,556,981	5,862,522	141,745	106,838
Honors House	N/A	N/A	N/A	16,152	10,688
Kentwood	N/A	N/A	850,000	63,958	43,711
Sunvilla Tower	1976	1,581,241	1,583,936	134,181	101,728
Wells	1950	244,159	1,894,919	120,159	79,578
Woods	1971	1,933,496	2,006,966	73,353	49,504

Source: Division of Financial Services and Building Characteristic Report (EARL 0056).

**PERCENT OF CLASSROOM SPACE UTILIZED IN RELATION
TO A UTILIZATION STANDARD, FALL 1986***



**PERCENT OF LABORATORY SPACE UTILIZED IN RELATION
TO A UTILIZATION STANDARD, FALL 1986***



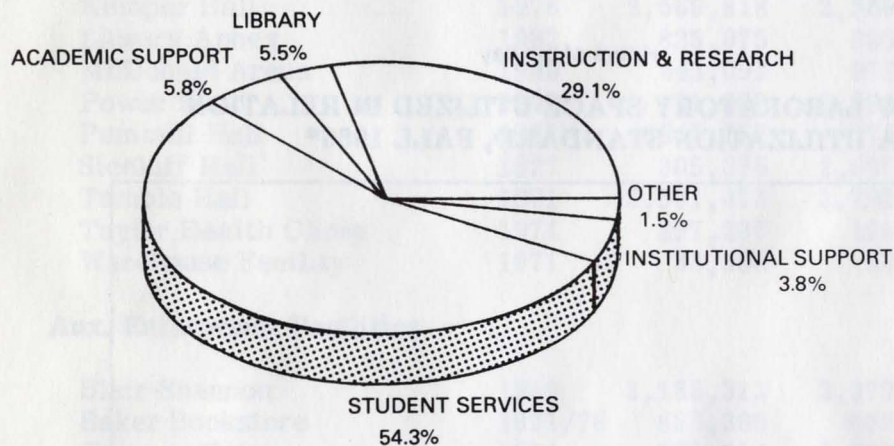
* Utilization standard is 66% for classroom space and 44% for laboratory space.
Standards from University Space Planning by Harlan Bareither and Jerry Schillinger.

**DISTRIBUTION OF ASSIGNABLE SQUARE FEET OF BUILDING SPACE
BY ROOM USE AND PROGRAM AREAS - SPRINGFIELD CAMPUS
FALL 1986**

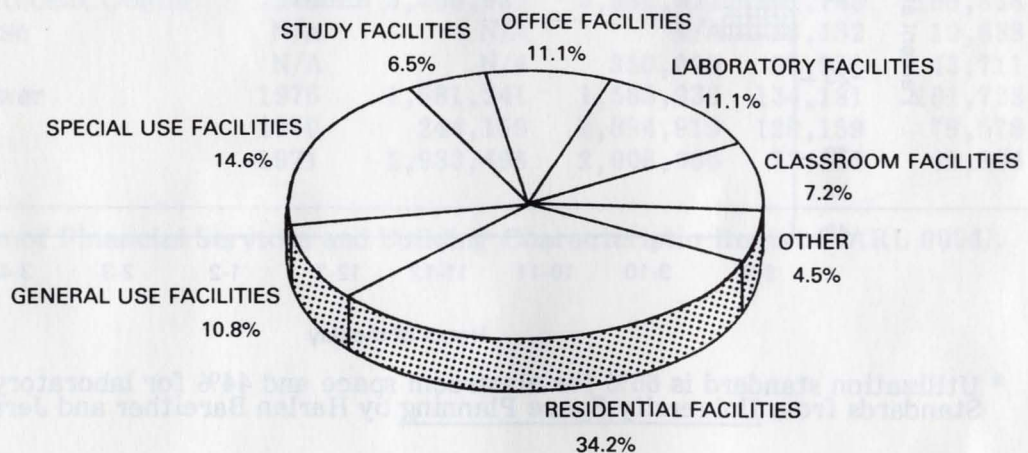
Program Areas	Room Use Categories														Total
	Class Room	Class Lab	Spec. Class Lab	Indiv. Study Lab	Non-Class Lab	Office	Study Facil.	Special Use Facil.	General Use Facil.	Support Facil.	Health Care Facil.	Residence Facil.	Un-Class.	Unas-signed	
Instruction	114,555	147,180	17,324	4,296	2,048	100,989	15,222	36,837	7,670	8,876	539	-	2,461	-	457,997
Research	-	-	379	-	3,940	-	-	-	-	-	-	-	-	-	4,319
Public Service	-	-	-	-	-	-	-	-	-	-	-	-	-	-	-
Library	-	-	-	-	-	4,571	78,595	-	1,725	857	-	-	-	-	85,748
Academic Support	-	-	1,050	-	-	11,355	1,819	61,479	17,153	-	-	-	-	-	92,856
Student Service	-	-	-	-	-	35,000	7,369	130,587	142,439	3,162	5,156	538,039	647	-	862,399
Instit. Support	-	-	116	-	-	22,641	-	2,936	1,364	28,437	-	4,208	-	-	59,702
Physical Plant	-	-	-	-	-	2,371	-	-	709	16,451	-	-	-	-	19,531
Unclassified	-	-	-	-	-	-	-	-	-	-	-	-	-	5,101	5,101
Total	114,555	147,180	18,869	4,296	5,988	176,927	103,005	231,839	171,060	57,783	5,695	542,247	3,108	5,101	1,587,653

Source: Office of Planning and Policy (EARL 0061)

BUILDING SPACE BY PROGRAM AREA



BUILDING SPACE BY ROOM USE



**CLASSIFICATION OF STUDENTS IN UNIVERSITY HOUSING
AT BEGINNING OF FALL SEMESTER, 1982-1986**

	Freshmen	Sophomores	Juniors	Seniors	Other	Total
1982	1,912	595	264	175	4	2,950
1983	1,913	563	292	171	8	2,947
1984	2,037	556	251	174	12	3,030
1985	2,386	342	167	64	11	2,970
1986	2,259	606	248	135	19	3,267

**CLASSIFICATION OF STUDENTS IN UNIVERSITY HOUSING
BY HOUSING UNIT AT BEGINNING OF FALL 1986**

	Freshmen	Sophomores	Juniors	Seniors	Graduates	Special	Totals
Blair House	298	56	17	5	0	0	376
Freudenberger House	528	144	42	25	1	2	742
Hammons House	432	92	35	16	0	0	575
Shannon House	285	34	4	7	0	1	331
Wells House	258	72	28	16	3	0	377
Woods House	275	62	21	10	0	0	368
Dogwood Apartments	26	34	19	10	1	0	90
Honors House	8	9	7	0	0	0	24
Kentwood Hall	14	20	22	20	6	4	86
Sunvilla Tower	135	83	53	26	1	0	298
Total	2,259	606	248	135	12	7	3,267

Source: Division of Student Affairs

LIBRARY FACTS

Library services are offered by the Duane G. Meyer Library and the Music Library. The Duane G. Meyer Library, a \$7,000,000 facility, opened for use on August 25, 1980. The Library has 116,643 square feet and will seat 1,620 persons in public areas. An annex to the Library, opened in 1982, houses a collection of little-used books, periodicals, and government documents. A Music Library, located in Ellis Hall, was established on January 1, 1986, to house an extensive collection of records, tapes, and music scores in addition to books and periodicals.

The Library has collections consisting of approximately 450,000 accessioned volumes; current subscriptions to over 4,000 periodicals and newspapers; and extensive back files of journals and newspapers, many on microfilm, microcard, and microfiche. Total microform holdings amount to 680,000 units. Collections of films, filmstrips, tapes, cassettes, records, and other audiovisual materials totaling over 14,700 titles are also maintained in the libraries.

The Meyer Library has been a selective depository for U.S. government publications since 1963. It is also a full depository for Missouri state publications. The total number of state and federal documents exceeds 550,000. A collection containing maps, atlases, aerial photographs, and travel information is one of the largest holdings of cartographic materials in Missouri with over 170,000 items.

Special collections are also in evidence in the Library. A curriculum laboratory houses a children's literature collection, a textbook collection, a collection of curriculum guides, and special learning materials. The William J. Jones collection of Rimbaud and Butor works is the largest collection in the United States of materials by and about Jean Arthur Rimbaud, the French poet.

The Library is a member of the On-Line Computer Library Center, Inc., (OCLC) and has access through the system to a bibliographic data base of over 11 million items. In addition to on-line computer search services, users of the library can access the past five years of periodical information using laser-based periodical indexes. The Library is also a member of the Southwest Missouri Library Network, a cooperating network of over 30 public, academic, school, and special libraries located in Southwest Missouri. State-of-the-art telefacsimile transmissions are used for document delivery between libraries and commercial suppliers of materials. Furthermore, the Library has reciprocal borrowing agreements with nine academic libraries in the area and with all state-supported institutions of higher education.

A staff of 20 librarians, 23 support staff, and approximately 125 students provide services as well as assistance and advice in the use of library materials to faculty and students. Photocopying services are also available through coin-operated copiers and special microform copiers.

In 1986, a major forward-looking step was taken by the Library with the purchase of the NOTIS software package which will provide the basis for a totally integrated on-line catalog and acquisition system. When the system becomes fully operational in 1987, patrons will be able to access the catalog at terminals placed throughout the library buildings, in campus offices, and in dormitories. Processing of materials from acquiring them to cataloging and checking them in will take place using the on-line catalog.

CIRCULATION STATISTICS

Year	Music	Maps	Audio- Visual	General Circulation Total	All Circulation
1981-82	--	--	19,468	145,934	165,402
1982-83	--	960	15,878	143,058	159,896
1983-84	--	1,317	17,935	146,706	165,958
1984-85	--	1,339	15,660	143,712	160,711
1985-86	447	1,923	41,763	159,382	203,515

Source: Dean of Library Services

COLLECTION AT END OF ACADEMIC YEAR

Year	Book Stock (Vols.)	Separate Govt. Documents	Microforms (Books and Periodicals)	Audio- Visual & Others	Periodical Subscriptions (Titles)	Maps Charts Etc.
1981-82	384,935	375,449	467,805	5,925	4,528	120,000
1982-83	397,025	416,200	492,500	6,199	4,435	118,667
1983-84	408,325	488,749	519,066	6,657	4,373	113,051
1984-85	423,228	583,809	619,463	7,027	4,265	155,246
1985-86	437,440	558,876	680,000	14,714	4,264	170,993

Source: Dean of Library Services

LIBRARY EXPENDITURES

Year	Books	Periodicals & Serials	Audiovisuals	Personnel	Other Library Expenses	Total Library Expenses
1981-82	174,550	245,129	29,314	878,253	109,059	1,436,305
1982-83	217,744	274,824	42,238	899,919	71,861	1,506,586
1983-84	219,120	302,020	44,140	1,019,123	94,937	1,679,340
1984-85	240,236	342,276	48,342	1,046,844	139,694	1,817,392
1985-86	389,091	609,071	72,384	1,098,760	605,094	2,774,400*

Source: Dean of Library Services

*Includes a one-time appropriation of \$907,293

West Plains Campus

HIGHLIGHTS

- * In the last ten years, headcount enrollment at the West Plains Campus has increased 50.6 percent to an all-time high enrollment of 661 in fall 1986.
- * Female students comprise 70 percent of the 1986 enrollment, and 58.7 percent of the enrollment attend part time.
- * Credit hour production increased 12.5 percent over the fall 1985 figure.
- * Seventeen counties in Missouri and seven other states are represented in the enrollment.
- * Instructional faculty number 43, 13 of whom are full time. Of the 8 tenure track faculty, 7 are tenured. Of the total faculty, 6 hold doctorate degrees.



**FALL HEADCOUNT ENROLLMENT
WEST PLAINS CAMPUS**

	1977	1978	1979	1980	1981	1982	1983	1984	1985	1986
Enrollment Status										
Full-Time	177	168	194	221	230	217	242	208	238	273
Part-Time	262	291	330	265	298	325	341	361	370	388
Sex										
Male	171	175	175	152	162	178	189	161	167	199
Female	268	284	349	334	366	364	394	408	441	462
Totals	439	459	524	486	528	542	583	569	608	661

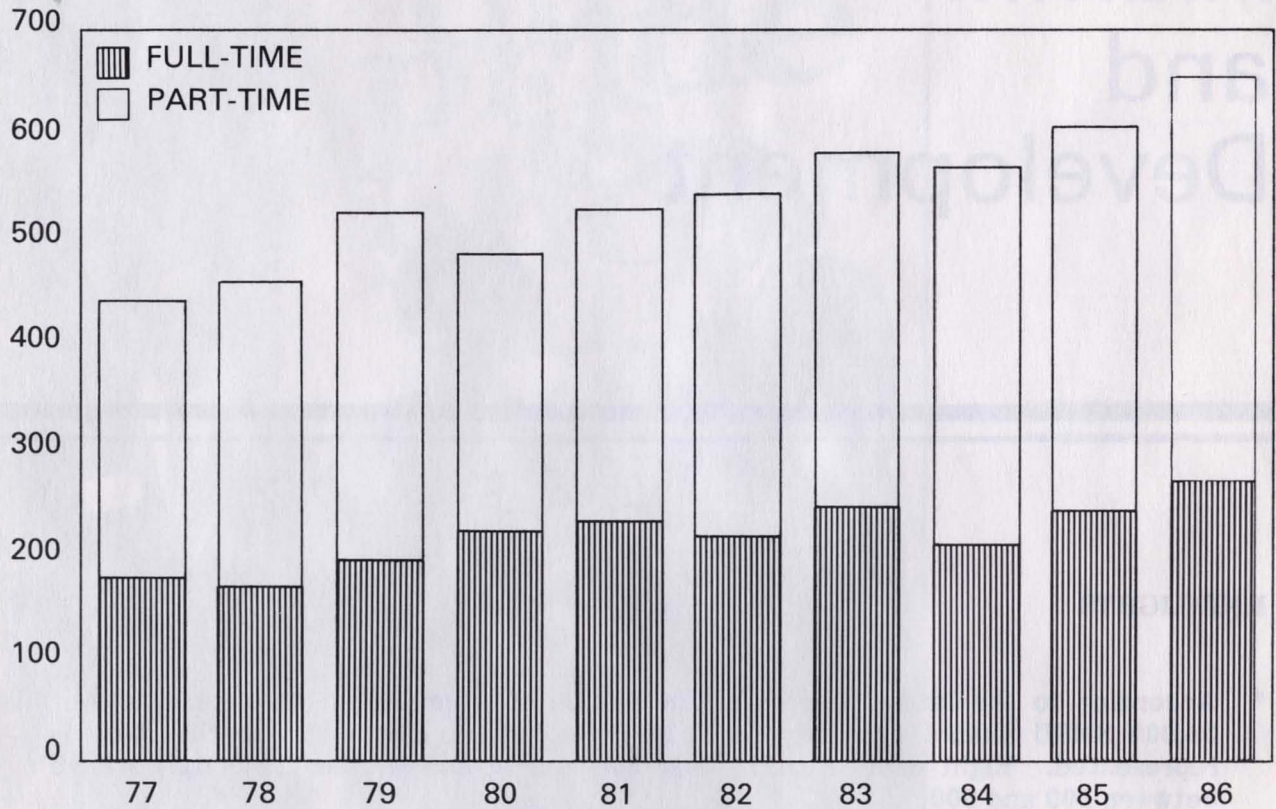
Source: HEGIS 2300-2.3A and IPEDS EF2

**STUDENT CREDIT HOUR PRODUCTION
WEST PLAINS CAMPUS**

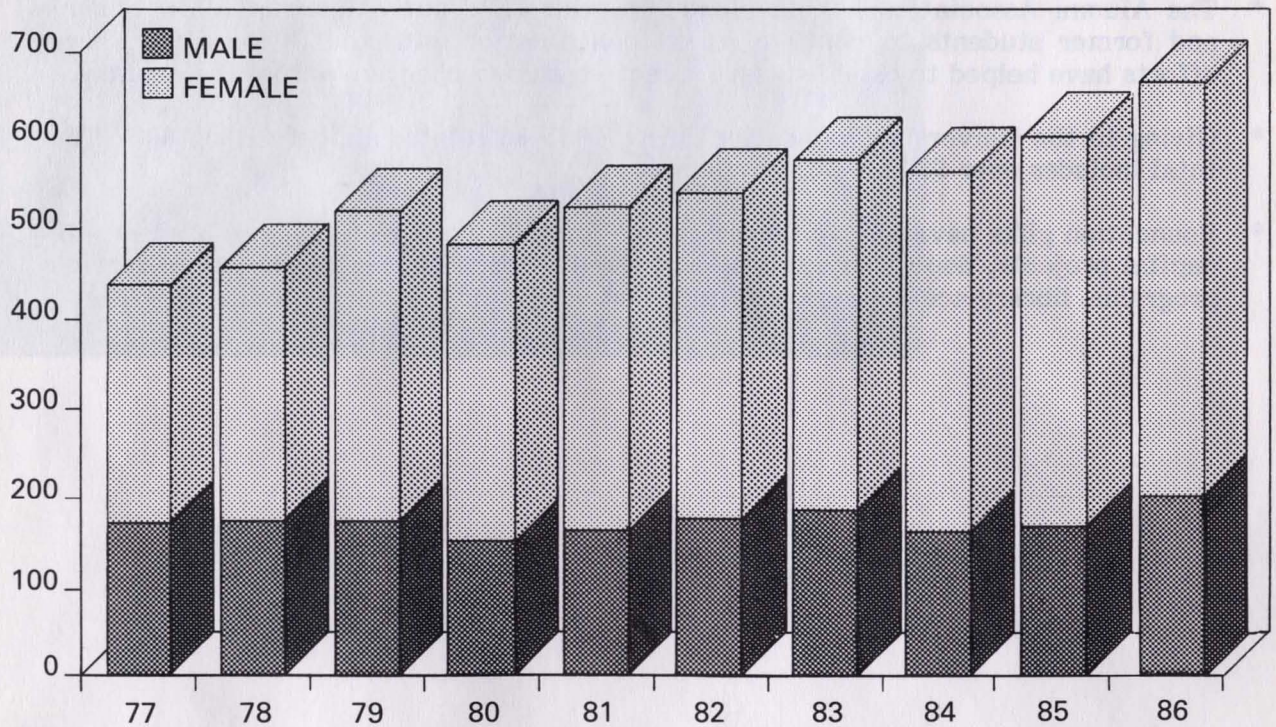
	Fall Semester	Spring Semester	Summer Semester	Total
1982-83	4,624	4,185	528	9,337
1983-84	4,899	4,380	593	9,872
1984-85	4,504	4,315	505	9,324
1985-86	4,968	4,693	486	10,147
1986-	5,591			

Source: MDHE 15

FALL ENROLLMENT BY ENROLLMENT STATUS WEST PLAINS CAMPUS



FALL ENROLLMENT BY SEX WEST PLAINS CAMPUS

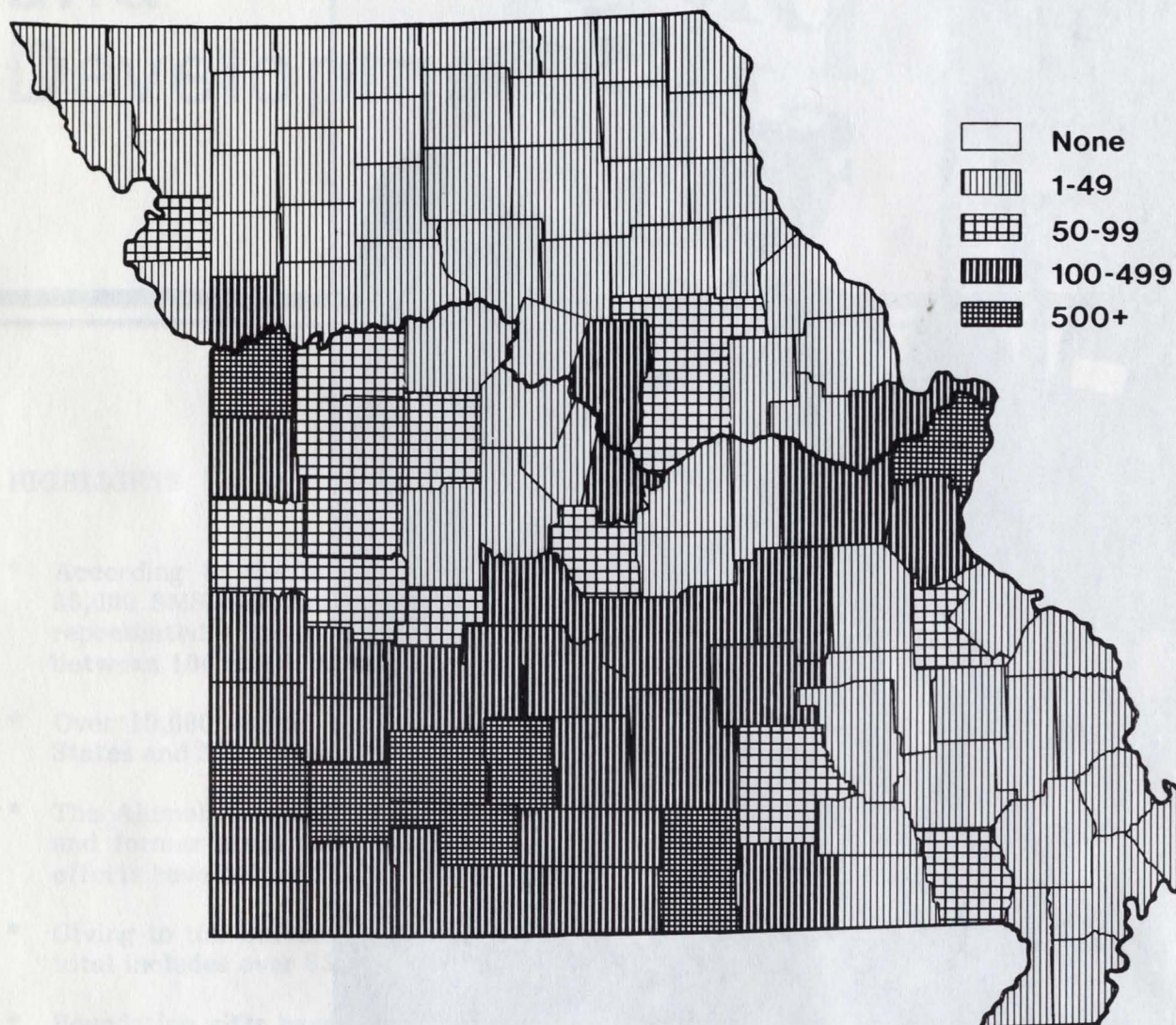


Alumni and Development

HIGHLIGHTS

- * According to the latest records of the Office of Alumni and Development, over 36,000 SMSU alumni currently reside in Missouri. Every county in the state is represented. Eight counties have over 500 alumni and another 29 counties have between 100 and 500.
- * Over 10,000 alumni live outside Missouri and represent every state of the United States and 31 foreign countries.
- * The Alumni Association has developed programs and activities that allow alumni and former students to continue their identification with the University. These efforts have helped to establish several active alumni chapters across the country.
- * Giving to the University Foundation during 1985-86 totaled almost \$1,655,000. The total includes over \$392,000 from alumni.
- * Foundation gifts have assisted a variety of University programs such as student aid, capital projects, departmental projects, faculty research, radio and public service programs, library acquisitions, and athletics.

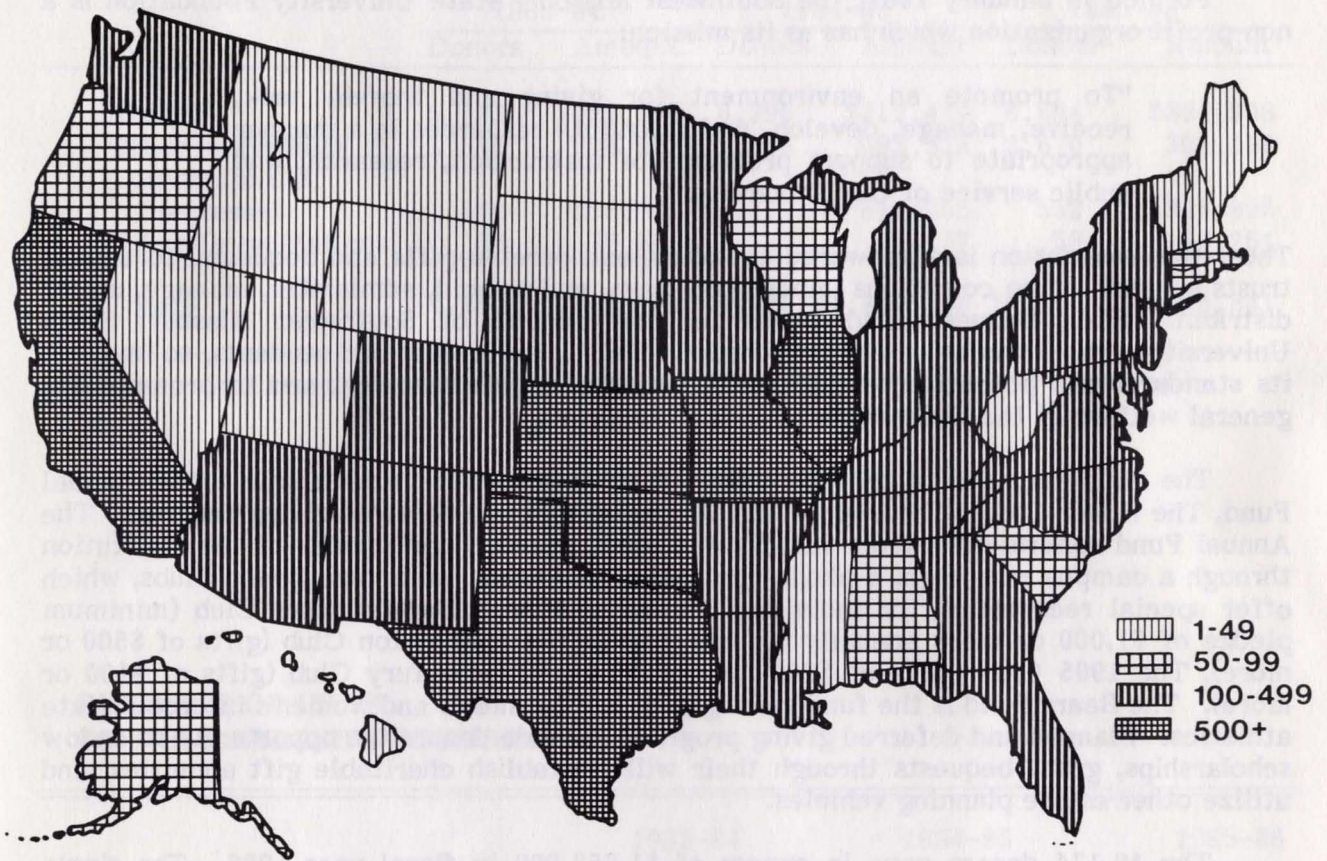


ALUMNI BY COUNTY OF RESIDENCE, 1986

Counties in Missouri in which more than 500 alumni reside are Christian, 797; Greene, 18,915; Howell, 579; Jackson, 1,942; Jasper, 545; Lawrence, 590; St. Louis, 3,485; and Webster, 683.

Source: Office of Alumni and Development

ALUMNI BY STATE OF RESIDENCE, 1986



ALUMNI CONTRIBUTIONS

<u>Fiscal Year</u>	<u>Total Support</u>
1981-82	214,165
1982-83	147,275
1983-84	221,395
1984-85	312,410
1985-86	392,996

Source: Office of Alumni and Development

SOUTHWEST MISSOURI STATE UNIVERSITY FOUNDATION

Formed in January 1981, the Southwest Missouri State University Foundation is a non-profit organization which has as its mission:

"To promote an environment for giving and therein seek, receive, manage, develop, and distribute resources in a manner appropriate to support programs of instruction, research, and public service of the University."

Thus, the Foundation is empowered to solicit and receive gifts and bequests, to accept trusts subject to the conditions imposed on them, and to hold, administer, manage, use or distribute gifts, bequests and trusts for the benefit of Southwest Missouri State University. The Foundation exists to benefit SMSU, its faculty and students, to improve its standards and potentialities as an institution of higher learning, and to promote the general welfare of the University.

The main emphasis of the Foundation is centered around the Greater SMSU Annual Fund, The Honor Clubs, The Bears Fund, and a planned and deferred giving program. The Annual Fund solicits gifts from faculty and staff, alumni, and friends of the institution through a campus campaign, a phone campaign, and direct mail. The Honor Clubs, which offer special recognition for individual giving, include: The Founders Club (minimum pledge of \$1,000 or more annually for ten years), The Carrington Club (gifts of \$500 or more), The 1905 Club (gifts of \$250 or more), and The Century Club (gifts of \$100 or more). The Bears Fund is the fund-raising program for men's and women's intercollegiate athletics. Planned and deferred giving programs provide donors the opportunity to endow scholarships, grant bequests through their wills, establish charitable gift annuities, and utilize other estate planning vehicles.

The 10,174 donors gave in excess of \$1,653,000 in fiscal year 1986. The single largest gift received by the University was an ion implanter donated by IBM. This gift-in-kind, valued at \$300,000, was contributed to the College of Science and Mathematics.

**SOURCES OF GIFTS
TO THE UNIVERSITY FOUNDATION**

	1983-84		1984-85		1985-86	
	Donors	Amount	Donors	Amount	Donors	Amount
Alumni	5,333	\$221,395	6,299	\$312,410	6,894	\$392,996
Other Individuals	1,512	278,932	2,475	693,326	2,670	301,198
Corporations & Businesses	560	258,601	477	813,755	552	808,896
Other Organizations	53	49,649	47	20,257	58	150,251
Totals	7,458	\$808,577	9,298	\$1,839,748	10,174	\$1,653,341

Source: Southwest Missouri State University Foundation (Honor Roll of Donors)

**PURPOSES OF GIFTS
TO THE UNIVERSITY FOUNDATION**

	1983-84	1984-85	1985-86
Student Aid	\$ 44,207	\$ 68,839	\$ 81,487
Endowment and Loan Funds	235,449	610,933	394,061
Capital Purposes	69,001	584,654	300,000
University Programs*	459,920	575,322	877,793
Totals	\$808,577	\$1,839,748	\$1,653,341

*University programs assisted through these gifts included various academic departments, research projects, radio and other public service programs, library acquisitions, and athletics.

Source: Southwest Missouri State University Foundation (Honor Roll of Donors)

Miscellaneous

HIGHLIGHTS

- * The University currently maintains nine on-campus centers for research and public service. Another center has recently been established at Branson, Missouri, to coordinate outreach services to the Tri-Lakes region south of Springfield.
- * The University serves the state fruit growers through research performed at the State Fruit Experiment Station in Mountain Grove. The Experiment Station was assigned to the University on July 1, 1974, under the State Government Reorganization Act.



**SOUTHWEST MISSOURI STATE UNIVERSITY
CENTERS AND EXPERIMENT STATION**

Centers

Center for Archaeological Research (College of Humanities and Social Sciences, 1975)

The Center is designed to study, record, and share knowledge of past cultures. The information gained from archaeological research is then disseminated through a variety of scholarly outlets and educational programs.

Center for Business Research and Development (College of Business Administration, 1981)

The Center promotes the growth and development of business in Missouri through the services of three programs. The Small Business Development program provides a variety of assistance ranging from entrepreneurial assessments for new businesses to in-depth counseling and technical help for established businesses. It also is able to offer its clients the advice and counsel of experienced and successful business people in southwest Missouri. Through the Short-Term Instruction program, seminars and short courses are offered to provide the technical and managerial knowledge needed by small businesses to be successful. In addition, the Center's staff, which has expertise in business research and computer systems analysis and design, is available to assist businesses in the use of the latest technology.

Center for Economic Education (College of Humanities and Social Sciences, 1972)

The Center promotes an increased understanding of economic principles among teachers and students in elementary and secondary education. It offers workshops and credit courses to encourage this activity.

Center for Economic Research (College of Humanities and Social Sciences, 1971)

The Center serves as a depository of economic data relevant to the Ozarks region. It distributes that information to interested parties to encourage economic research and to stimulate interest in special projects.

Center for Gerontological Studies (College of Education and Psychology, 1978)

The Center is engaged in programs designed to define and to help meet the needs of aging persons in southwest Missouri. The programs provide educational opportunities, train professionals and paraprofessionals, identify service needs, and support research on aging.

Center for Health Research and Service (College of Health and Applied Sciences, 1984)

The Center provides administrative support for research and public service in the allied health professions through the operation of clinics in sports medicine, speech and hearing, and nursing services.

Center for Ozarks Studies (College of Humanities and Social Sciences, 1975)

The Center is a multi-disciplinary research enterprise focusing on the Ozarks region for the purpose of promoting geographic/historic regional studies.

Center for Psycho-Educational Research and Service (College of Education and Psychology, 1984)

The Center provides research and public service support for the College of Education and Psychology. In addition, it serves as a coordinating agent for the Learning Diagnostic Clinic and the Weekend Intervention Program. The Clinic offers academic support services to help students achieve their academic goals. Strategies include tutoring, instruction in basic skills, diagnostic testing and evaluation, computer assisted instruction, and assistance with course selection. The Weekend Intervention Program offers help to people from the community who have been arrested for driving while intoxicated. The program brings together a group of psychologists who provide a weekend of intense education and counseling. The intent is to teach individuals how to assess the effects of alcohol in their lives.

Center for Scientific Research and Service (College of Science and Mathematics, 1984)

The Center provides administrative support for research and public service activities in the areas of resource planning and management, environmental studies, and computer simulation and analysis.

University Center in the White River Valley (Reports to the Vice President for Academic Affairs, 1984)

The Center coordinates many University outreach services in the Tri-Lakes region, including teaching credit and non-credit courses, supporting the tourism industry, and promoting knowledge about and understanding of the Ozarks. The Center maintains an office in Branson for the convenience of area residents.

Experiment Station

State Fruit Experiment Station (College of Health and Applied Sciences, 1974)

The Experiment Station provides Missouri fruit growers with information obtained through on-going research in the areas of pomology, plant breeding, plant pathology, entomology, enology, and viticulture.

It is the policy of Southwest Missouri State University not to discriminate on the basis of race, color, age, sex, handicap, religion, or national origin in its educational programs, financial aids, activities, admissions, or employment policies.

