



**System Fact Book
2011-2012**

Prepared by the
Office of Institutional Research

Dr. Katherine C. Coy, Director

Office of Institutional Research, Missouri State University
901 S. National Avenue, Springfield, MO 65897
Phone: (417) 836-5274, Fax: (417) 836-6486
Email: InstitutionalResearch@MissouriState.edu
Web: <http://missouristate.edu/oir>

Contents

Executive Summary	1
--------------------------------	----------

General Information

Highlights	2
System Overview	4
University System Organization Chart	5
History and Mission	6
Organizational Officers	8
Missouri State Map with Public Colleges and Universities	10
Accreditation	11

Student Information

Highlights	12
Fall Headcount Enrollment, 2002-2011	13
Fall Enrollment by Enrollment Status, 2002-2011, chart	13
Fall Enrollment by Ethnic Category and Gender, 2007-2011	14
Fall Enrollment by Gender, 2002-2011, chart	15
Fall Enrollment by Academic Level, chart	15
Headcount Enrollment by Class in Fall Semesters, 2007-2011	16
Legal Residence of Students in Fall Semesters, 2007-2011	16
Student Enrollment by County of Residence, Fall 2011, map	17
Student Enrollment by State of Residence, Fall 2011, map	18
International Student Enrollment, Fall 2011	19
Credit Hour Production by Course Level by Semester, 2007-2008 to 2011-2012	19
Schedule of Resident Student Fees, 2007-2008 to 2011-2012	20
Basic Fees per Hour for Resident Students, 2007-2008 to 2011-2012, chart	20
Student Financial Aid, FY 2007-2011	21
Financial Aid Granted by Category, FY 2007-2011, chart	21
Admissions Summary in Fall Semesters, 2007-2011	22
First-Time Undergraduate Admissions, 2007-2011, chart	22
ACT Standard Scores for First-Time Freshmen, 2006-2007 to 2010-2011	23
High School Class Rank of First-Time Freshmen in Fall Semesters, 2007-2011	23
Cumulative GPA by Student Class in Fall Semesters, 2006-2010	24
Percentage Distribution of Grades in Fall Semesters, 2006-2010	24
Number of Departmental Majors by College in Fall Semesters, 2010-2011	25

Programs and Degrees

Highlights	26
Degree Programs Currently Available-Springfield Campus	28
Academic Degrees and Certificates Currently Offered	30
Number of Degrees Conferred, FY 2007-2011	31
Degrees Conferred by Gender, FY 2007-2011, chart	31
Degrees Conferred by Level, FY 2007-2011, chart	31

Faculty and Staff

Highlights	32
Full-Time Instructional Faculty, 2007-2008 to 2011-2012	34
Average Salary of Nine-Month Instructional Staff, 2007-2008 to 2011-2012	35
Average Salary by Rank and Year, 2007-2008 to 2011-2012, chart.....	35
Full-Time and Part-Time Employees by Category, 2007-2008 to 2011-2012	36
Full-Time Employees by Job Category, chart	36
Highest Degree Held by Faculty and Professional Staff	37
Degrees of Faculty and Professional Staff, chart.....	37

Financial Resources

Highlights	38
Revenues, FY 2011, chart.....	40
Revenues, FY 2006-2011	40
Operating Expenses, FY 2011, chart.....	41
Operating Expenses, FY 2007-2011	41
Operating Expenses by Category, FY 2011	42
Operating Expenses by Expense Category, FY 2011, chart.....	42
Revenues and Expenses Budgeted	43
Office of Sponsored Research and Programs	44
Sponsored Projects Activity: Comparison of Awards, FY 2007-2011	45
Primary Use of Funds Awarded in FY 2011, chart	45

Facilities

Highlights	46
Classification of Students in University Housing by Level, 2007-2011	48
Classification of Students in University Housing by Housing Unit, Fall 2011	48
Springfield Campus Map.....	49
General Characteristics of Major Physical Facilities, Fall 2010	50
Distribution of Assignable Building Space by Room Use and Program Area, Fall 2011	52
Building Space by Program Area, chart	53
Building Space by Room Use, chart.....	53
University Libraries.....	54
Circulation Statistics, 2006-2007 to 2010-2011	55
Collection at End of Academic Year, 2006-2007 to 2020-2011	55
Library Expenditures, 2006-2007 to 2010-2011	55

Missouri State University - West Plains

Highlights	56
General Information	58
Fall Headcount Enrollment, 2002-2011	60
Credit Hour Production by Semester, 2007-2008 to Fall 2011	60
Fall Enrollment by Gender, 2002-2011, chart.....	61
Fall Enrollment by Enrollment Status, 2002-2011, chart.....	61
Schedule of Resident Student Fees, 2007-2008 to 2011-2012	62
Basic Fees per Hour for Resident Students, 2007-2008 to 2011-2012, chart.....	62
Educational and General Funds, Budgeted FY 2011.....	63

Alumni and Development

Highlights	64
Alumni by County of Residence, 2011, map.....	66
Alumni by State of Residence, 2011, map	67
Missouri State University Foundation.....	68
Gift Activity, 2008-2009 to 2010-2011	69
Sources of Outright Gifts, 2008-2009 to 2010-2011	69
Purposes of Outright Gifts, 2008-2009 to 2010-2011	69

Missouri State University – Mountain Grove

Highlights	70
History and General Information.....	72

The Office of Institutional Research also publishes the Fact Book on its website.
View the Fact Book along with our other publications at:

www.missouristate.edu/oir

We welcome your comments, suggestions, and questions.

Executive Summary

	<u>2007-2008</u>	<u>2008-2009</u>	<u>2009-2010</u>	<u>2010-2011</u>	<u>2011-2012</u>
Fall Maximum Registration**	21,751	22,090	22,949	23,309	23,012
Springfield	19,994	20,256	20,787	21,080	20,870
West Plains	1,757	1,834	2,162	2,229	2,142
Fall Headcount Enrollment	21,105	21,323	22,533	22,701	22,418
Undergraduate - Springfield	16,255	16,273	17,024	17,205	17,187
Undergraduate -West Plains	1,757	1,834	2,162	2,229	2,142
Graduate - Springfield	3,093	3,216	3,347	3,267	3,089
Fall Student Credit Hours	244,420	246,634	258,525	263,408	260,439
Undergraduate - Springfield	210,257	210,633	211,826	214,151	215,792
Undergraduate -West Plains	17,006	18,362	21,428	23,292	21,983
Graduate - Springfield	17,157	17,639	25,271	25,965	22,664
Degrees Awarded by Fiscal Year*	3,617	3,959	4,204	4,274	N/A
Associate	0	0	N/A	0	N/A
Bachelor's	2,795	3,015	3,185	3,131	N/A
Master's	773	889	978	1,086	N/A
Specialist	18	26	15	30	N/A
Doctorate	31	29	26	27	N/A
Instructional Staff Headcount*	737	718	721	699	701
Tenured	448	448	433	429	442
Non-Tenured	289	270	288	270	259
Revenues	264,765,444	296,436,751	300,270,091	298,565,514	N/A
Student Fees	79,399,259	82,710,569	96,686,518	97,735,332	N/A
State Appropriations	85,015,416	98,182,686	90,828,486	83,071,300	N/A
Other Sources	100,350,769	115,243,496	112,755,087	117,758,882	N/A
Expenses	247,175,242	268,476,250	277,094,738	273,80,7399	N/A
Instruction and Research	87,575,713	110,355,866	108,836,474	106,250,644	N/A
Other Expenses	159,599,529	158,120,384	168,258,264	167,556,755	N/A
Education & General Space*	1,867,876	1,901,333	1,444,740	1,919,719	1,919,719
Library Circulation*	122,573	114,196	106,499	96,613	N/A
Music	8,010	8,286	7,205	9,770	N/A
Maps	529	301	278	340	N/A
Audio-Visual	11,091	7,453	6,128	4,530	N/A
General Circulation	92,510	88,226	83,054	71,924	N/A
Greenwood	10,433	9,930	9,834	10,049	N/A
Outright Gifts (dollars)	14,050,400	15,044,534	15,512,371	16,698,481	N/A

* Springfield only **Excludes China Campus



General Information

Highlights

- On August 28, 2005, the University became known as Missouri State University. This is the University's fifth name after being founded as the Fourth District Normal School in 1905.
- Missouri State University is one of the 13 four-year, public supported institutions of higher education in Missouri.

In addition to the main campus in Springfield, there is a two-year branch campus in West Plains and a research campus in Mountain Grove.

- The University was given a regional mission by legislative act in 1919. That mission was expanded in the spring of 1995. The name of the University's governing board was also changed to the Board of Governors, and its composition reflects the change in mission.
- The Springfield and West Plains campuses are separately accredited by the Higher Learning Commission-North Central Association of Colleges and Secondary Schools.

Missouri State University System



**Missouri
State**
UNIVERSITY



Springfield

Mountain Grove

West Plains

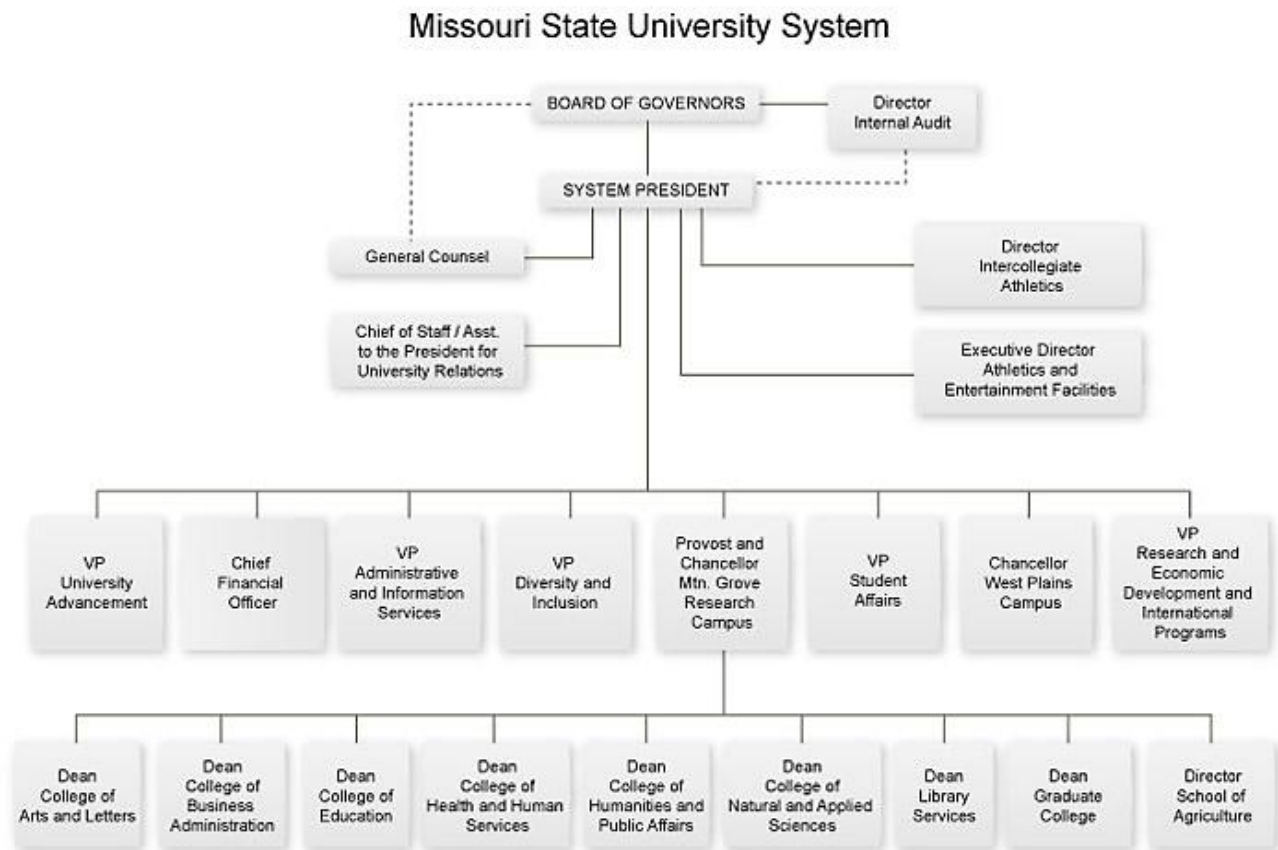
Extended Campus

System Overview

Missouri State University is a public, comprehensive university system with a mission in public affairs, whose purpose is to develop educated persons while guided by three overarching and enduring commitments to student learning, inclusive excellence and institutional impact. The University's identity is distinguished by its statewide mission in public affairs, requiring a campus-wide commitment to foster competence and responsibility in the common vocation of citizenship. The academic experience is grounded in a general education curriculum which draws heavily from the liberal arts and sciences. This foundation provides the basis for mastery of disciplinary and professional studies. It also provides essential forums in which students develop the capacity to make well-informed, independent critical judgments about the cultures, values, and institutions in society.

The Missouri State University campuses are structured to address the special needs of the urban and rural populations they serve. Missouri State University-Springfield is a selective admissions, graduate level teaching and research institution. Missouri State University-West Plains is an open admissions campus serving seven counties in south central Missouri. Missouri State University-Mountain Grove serves Missouri's fruit industry through operation of the State Fruit Experiment Station. The Extended Campus provides anytime, anyplace learning opportunities through telecourses, Internet-based instruction and through its interactive video network (BearNet). The University also operates various other special facilities, such as the Darr Agricultural Center in southwest Springfield, the Jordan Valley Innovation Center in downtown Springfield, the Bull Shoals Field Station near Forsyth, Baker's Acres and Observatory near Marshfield, the Missouri State University Graduate Center in Joplin, and a branch campus at Liaoning Normal University in Dalian, China. In addition, Missouri State has the operations and program offerings of one entire academic department, its Department of Defense and Strategic Studies, located near Washington, D.C., in Fairfax, Virginia.

University System Organization Chart



The President is the chief executive officer of the University and is responsible to the Board of Governors. The Provost heads the Deans of Academic Colleges & Library Services and the Director of the School of Agriculture. The Chief Financial Officer heads the division of Financial Services. The divisions of Advancement, Administrative and Information Services, Diversity and Inclusion, Student Affairs, and Research and Economic Development and International Programs are each headed by a Vice President. The Provost and Vice Presidents, along with the Chancellors of West Plains and Mountain Grove Research Campus, report directly to the System President.

Other administrative positions which report directly to the System President include the General Counsel, Chief of Staff, Executive Director of Athletics and Entertainment Facilities, and Director of Intercollegiate Athletics.

History and Mission

University Heritage

Missouri State University was founded in Springfield in 1905 as the Fourth District Normal School. During its early years, the school's primary purpose was the preparation of teachers for the public school systems in southwest Missouri. The School's first name change came in 1919, when it became the Southwest Missouri State Teachers College, reflecting the institution's regional mission. By the mid-1940s, it had expanded beyond teacher education to include instructional programs in the liberal arts and the sciences; as a consequence, in 1945, the Missouri Legislature authorized an official name change to Southwest Missouri State College. In the ensuing decades, with the implementation of more programs at the undergraduate level and the development of a graduate education program, the College became an educationally diverse institution. Recognition of its further growth and development resulted in yet another name change in 1972, to that of Southwest Missouri State University. Finally, on March 17, 2005, the 100th anniversary of Founders' Day, Governor Matt Blunt signed Senate Bill 98, which included changing Southwest Missouri State University's name to Missouri State University. Today, Missouri State University is a multipurpose, metropolitan university providing a broad array of instructional, research, and service programs.

In 1963, a residence center, offering freshman and sophomore level courses, was established in West Plains, Missouri. Now, as a second campus of the University with its own mission and accreditation, the West Plains campus offers a two-year general education program, which is fully integrated with programs on the main campus, as well as other specialty and skills courses.

The State Fruit Experiment Station in Mountain Grove, Missouri, established by a legislative act in 1899, is the oldest identifiable segment of Missouri State University. Until 1974, it operated as a state agency under a board of trustees appointed by the Governor. As a result of the Omnibus State Reorganization Act of 1974, administrative responsibility for the Station was given to the Board of Regents of the University. In 2010, the Station was integrated into the William H. Darr School of Agriculture.

University Setting

The main campus of the University is located in Springfield, the third largest population center in Missouri with a metropolitan statistical area population of approximately 420,000. Supported by an industrial/manufacturing base and an expanding service industry in tourism, the community serves as a regional center for health and medical services for southwest Missouri, northwest Arkansas, southeast Kansas, and northeast Oklahoma. The second academic campus is located 110 miles southeast of Springfield in West Plains. This city of 11,000 serves as a regional hub for a seven-county area of south central Missouri and several adjacent counties in north central Arkansas. The research campus of the University is in Mountain Grove, a city of 4,900, which is approximately half way between Springfield and West Plains.

The University's primary service region of southwest Missouri has certain distinctive characteristics which influence various activities and programs of the institution. The southwest region, the fastest growing area in the state with a population of approximately 900,000, has a unique cultural heritage, a significant agricultural economic base, and a rapidly expanding tourism and recreational industry.

Educationally, the region is served by a diverse mix of both public and private colleges and universities. As the largest multipurpose university in southwest Missouri, Missouri State University provides educational leadership in the region.

University System Mission Statement

Missouri State University is a public, comprehensive university system with a mission in public affairs, whose purpose is to develop educated persons while guided by three overarching and enduring commitments to student learning, inclusive excellence and institutional impact.

The University's identity is distinguished by its public affairs mission, which entails a campus-wide commitment to foster expertise and responsibility in ethical leadership, cultural competence and community engagement.

The task of developing educated persons obligates the University to expand its store of human understanding through research, scholarship and creative endeavor, and drawing from that store of understanding, to provide service to the communities that support it. In all of its programs, the University uses the most effective methods of discovering and imparting knowledge and the appropriate use of technology in support of these activities.

The University functions through a multi-campus system that is integrated to address the needs of its constituents.

On June 15, 1995, Senate Bill 340 was signed into law, giving Missouri State University a statewide mission in public affairs. The focus on public affairs grew out of mission-review discussions with the Missouri Coordinating Board for Higher Education beginning in 1994. The public affairs focus is the integrating theme that cuts across and informs all disciplines in their relation to society.

Organizational Officers

Board of Governors

Missouri State University is under the general control and management of the Board of Governors, which according to statutes of the state of Missouri possesses full power and authority to adopt all needful rules and regulations for the guidance and supervision of the University.

Currently, Missouri State University is governed by a nine-member Board of Governors. All members are appointed by the Governor, with the advice and consent of the Missouri Senate, to serve six-year terms.

The nine-member Board of Governors shall represent each of Missouri's nine congressional districts. A non-voting member, a current Missouri State University student, also sits on the Board.



Gordon Elliott
Seventh District
Chair
2007-2013



Cathy Smith
Sixth District
Vice Chair
2006-2013



Orvin Kimbrough
First District
2009-2015



Stephen Hoven
Second District
2011-2017



John L. Winston
Third District
2005-2011



Brian Hammons
Fourth District
2006-2011



Stephen Bough
Fifth District
2011-2013



Peter Hofherr
Eighth District
2011-2017



Elizabeth Bradbury
Ninth District
2008-2011



Brandt Shields
Student Member
2010-2011

Administrative Council

Mr. Clif Smart

Interim President

Dr. Drew Bennett

Chancellor Missouri State University-West Plains

Mr. Brent Dunn

Vice President for University Advancement

Mr. Paul K. Kincaid

Chief of Staff/Assistant to the President for University Relations

Mr. Ken McClure

Vice President for Administrative & Information Services

Ms. June McHaney

Director, Internal Audit

Dr. Tammy Jahnke

Dean, College of Natural and Applied Sciences

Dr. Kenneth Coopwood, Sr.

Vice President for Diversity & Inclusion

Dr. Jim P. Baker

Vice President for Research and Economic Development

Dr. Earle F. Doman

Vice President for Student Affairs & Dean of Students

Mr. Steve Foucart

Interim Chief Financial Officer

Mr. John McAlear

Secretary to the Board of Governors

Dr. Frank Einhellig

Interim Provost

Mr. Kyle Moats

Director of Athletics

Ms. Penni Groves

Interim General Counsel

Academic Colleges -- Springfield Campus

College of Arts & LettersDr. Carey H. Adams,
Dean

Art & Design; Communication; English; Media, Journalism & Film; Modern & Classical Languages; Music; Theatre & Dance

College of Business AdministrationDr. Stephanie Bryant,
Dean

School of Accountancy; Computer Information Systems; Fashion & Interior Design; Finance & General Business; Management; Marketing; Technology & Construction Management

College of Education

Dr. Dennis Kear, Dean

Childhood Education & Family Studies; Counseling, Leadership, & Special Education; Greenwood Laboratory School; Reading, Foundations, & Technology

College of Health & Human Services

Dr. Helen Reid, Dean

Biomedical Sciences; Communication Sciences & Disorders; Health, Physical Education & Recreation; Nursing; Physical Therapy; Physician Assistant Studies; Psychology; School of Social Work; Sports Medicine & Athletic Training

College of Humanities & Public AffairsDr. Victor H. Matthews,
Dean

Criminology and Criminal Justice, Defense & Strategic Studies; Economics; History; Military Science; Philosophy; Political Science; Religious Studies; Sociology & Anthropology

College of Natural and Applied SciencesDr. Tamera S. Jahnke,
Dean

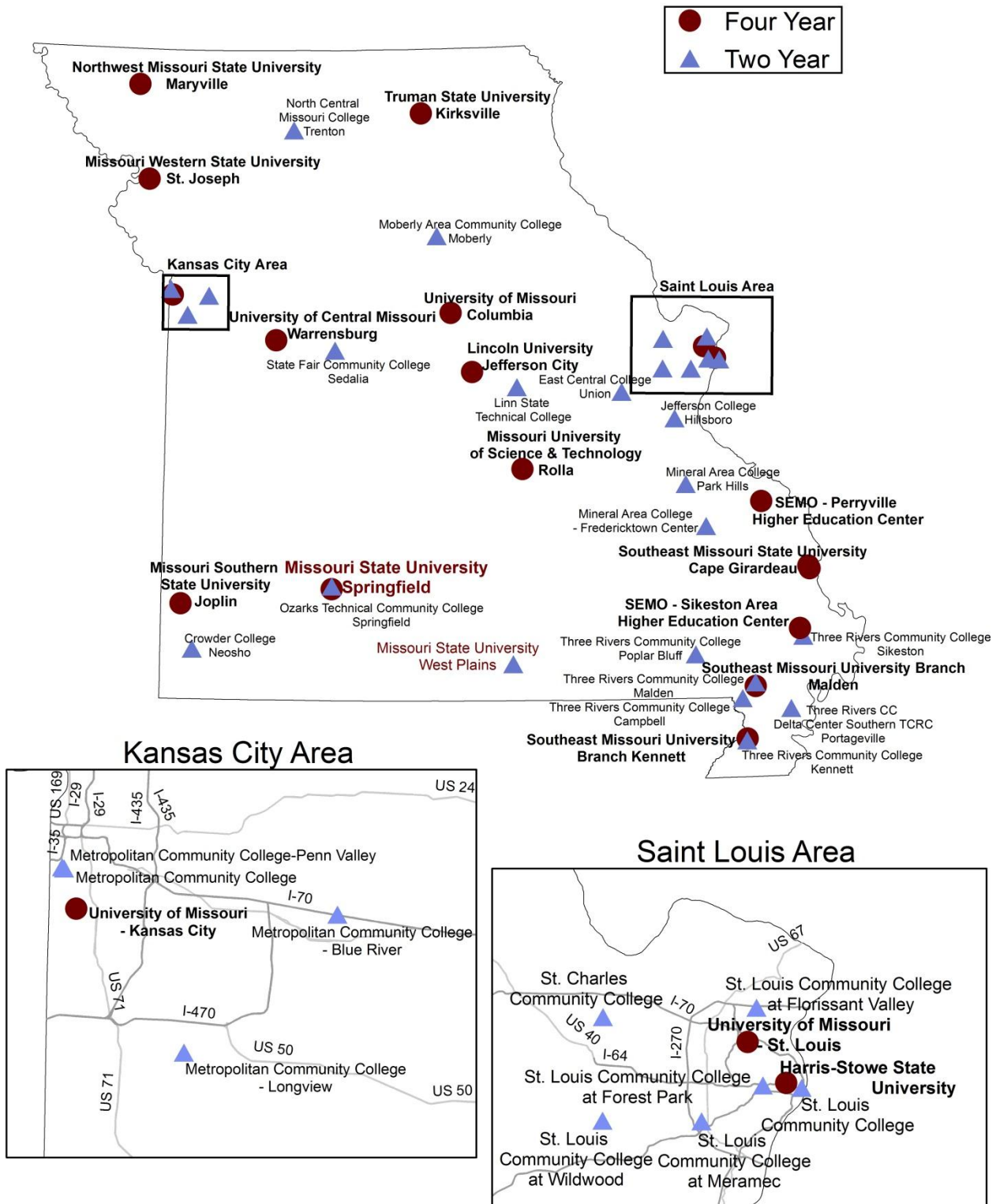
Biology; Chemistry; Computer Science; Geography, Geology, & Planning; Hospitality & Restaurant Administration; Mathematics; Physics, Astronomy, & Materials Science

Darr School of AgricultureDr. Anson Elliott,
Department Head

Agriculture

Graduate CollegeDr. Pawan Kahol,
Interim Dean

Missouri Public Colleges and Universities



Accreditation

The Springfield and West Plains campuses are separately accredited by the Higher Learning Commission - North Central Association of Colleges and Secondary Schools. The University is professionally accredited or approved by the following organizations:

AACSB International	Council on Social Work Education
Accreditation Commission for Programs in Hospitality Administration	Missouri Department of Elementary and Secondary Education
American Association of Family and Consumer Sciences	National Association of Industrial Technology
American Chemical Society	National Association of Schools of Music
American Dietetics Association	National Association of Schools of Public Affairs and Administration
American Speech, Language, and Hearing Association	National Association of Schools of Theatre
Commission on Accreditation of Allied Health Education Programs	National Council for Accreditation of Teacher Education
Commission on Accreditation of Physical Therapy Education	National Council on Education of the Deaf
Computing Sciences Accreditation Board	National League of Nursing Accrediting Commission
Council on Accreditation of Nurse Anesthesia Educational Programs	National Recreation and Parks Association/American Association for Leisure and Recreation



Student Information

Highlights

- The headcount enrollment on the Springfield campus for fall 2011 was 20,276.
- The fall 2011 enrollment included 1,956 minority students and 1,150 non-resident aliens, representing increases in both categories over fall 2010.
- Most of Missouri's counties (114 out of 115) were represented in the student body of the Springfield campus with 28 counties contributing 100 or more students.
- All 50 states and 77 countries were represented in the 2011 fall enrollment at Missouri State.
- More than \$166 million in financial aid was awarded to Missouri State students at the Springfield campus in fiscal year 2011, of which approximately 42 percent was based on need.
- In the fall of 2011, more than 238,000 credit hours were generated by Missouri State students on the Springfield campus.

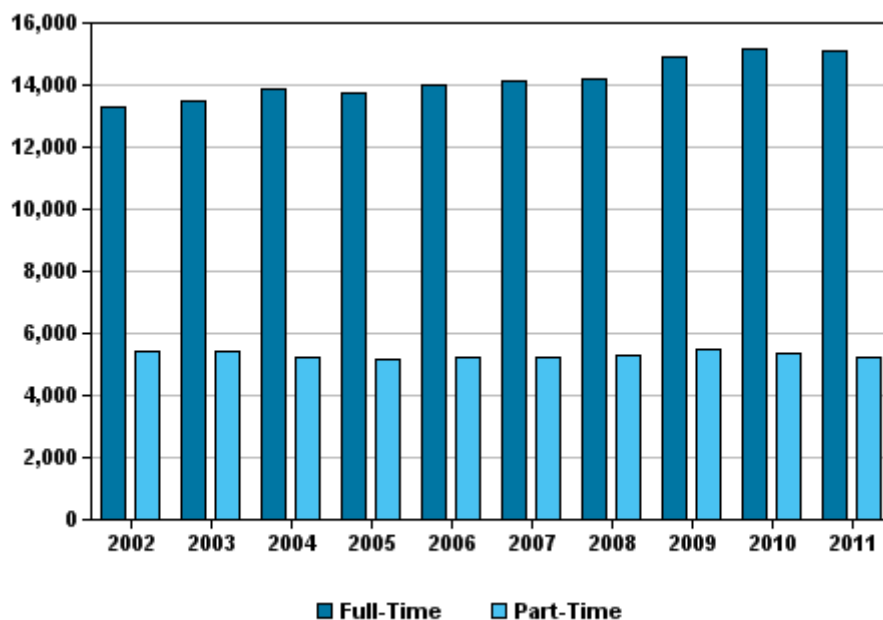
Fall Headcount Enrollment, 2002-2011

	<u>2002</u>	<u>2003</u>	<u>2004</u>	<u>2005</u>	<u>2006</u>	<u>2007</u>	<u>2008</u>	<u>2009</u>	<u>2010</u>	<u>2011</u>
Undergraduate										
Full-Time Male	5,514	5,553	5,572	5,604	5,600	5,662	5,766	5,929	5,910	5,990
Full-Time Female	6,798	6,896	7,191	7,026	7,186	7,098	7,034	7,390	7,539	7,518
Part-Time Male	1,385	1,418	1,484	1,487	1,486	1,516	1,493	1,618	1,727	1,575
Part-Time Female	1,751	1,904	2,022	2,040	1,962	1,979	1,980	2,087	2,029	2,104
Total Undergraduate	15,448	15,771	16,269	16,157	16,234	16,255	16,273	17,024	17,205	17,187
Graduate										
Full-Time Male	395	444	466	459	476	569	636	675	774	681
Full-Time Female	569	610	629	669	719	812	755	885	908	876
Part-Time Male	700	664	622	598	684	644	688	712	573	567
Part-Time Female	1,606	1,441	1,128	1,045	1,105	1,068	1,137	1,075	1,012	965
Total Graduate	3,270	3,159	2,845	2,771	2,984	3,093	3,216	3,347	3,267	3,089
Total, All Students	18,718	18,930	19,114	18,928	19,218	19,348	19,489	20,371	20,472	20,276

Note: includes off-campus

Source – ODSPROD-Student Enrollment Cube-Point in Time

Fall Enrollment – Springfield Campus



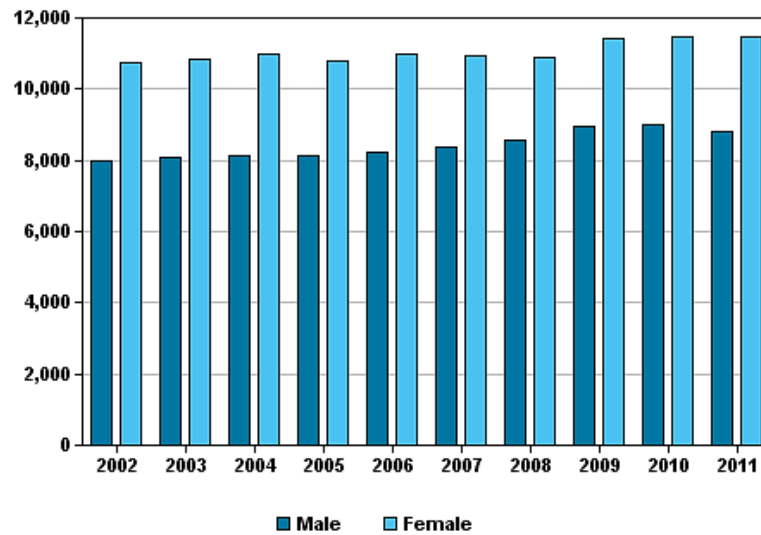
Fall Enrollment by Ethnic Category and Gender, 2007-2011

	<u>2007</u>		<u>2008</u>		<u>2009</u>		<u>2010</u>		<u>2011</u>	
	M	F	M	F	M	F	M	F	M	F
Undergraduate										
White or Caucasian	6,169	7,949	6,230	7,801	6,275	7,842	6,310	7,912	6,207	8,047
Black or African American	212	229	229	262	245	317	250	314	266	324
Hispanic or Latino	154	138	153	160	168	204	190	239	196	250
Asian	119	146	124	137	127	150	120	125	112	115
American Indian or Alaskan Native	63	78	63	85	56	84	65	71	50	73
Native Hawaiian or Other Pacific Islander*	0	0	0	0	0	0	13	18	13	12
More than one race*	0	0	0	0	0	0	101	164	101	186
Non-Resident Alien	132	164	136	210	209	304	255	397	255	387
Race/Ethnicity Unknown	329	373	324	359	467	576	333	328	333	228
Total Undergraduate	7,178	9,077	7,259	9,014	7,547	9,477	7,637	9,568	7,637	9,424
Graduate										
White or Caucasian	883	1,526	964	1,539	1,029	1,571	917	1,479	917	1,399
Black or African American	20	39	23	26	28	25	23	21	23	19
Hispanic or Latino	5	31	17	30	17	29	25	37	25	41
Asian	11	22	22	26	17	36	21	37	21	29
American Indian or Alaskan Native	5	13	6	4	4	7	9	14	9	17
Native Hawaiian or Other Pacific Islander*	0	0	0	0	0	0	3	2	3	1
More than one race*	0	0	0	0	0	0	11	23	11	27
Non-Resident Alien	209	145	227	161	216	180	270	214	270	226
Race/Ethnicity Unknown	80	104	65	106	76	112	68	93	68	82
Total Graduate	1,213	1,880	1,324	1,892	1,387	1,960	1,347	1,920	1,347	1,813
Total, All Students	8,391	10,957	8,583	10,906	8,934	11,437	8,984	11,488	8,984	11,237

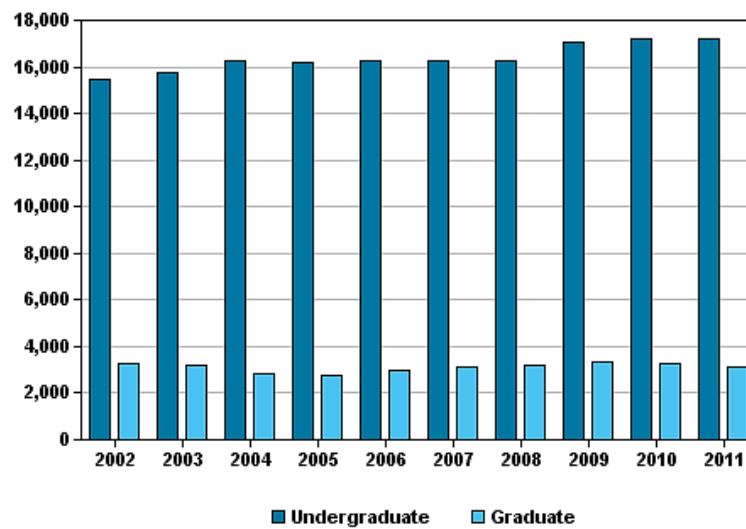
Note: In order to standardize race/ethnicity reporting with federal requirements additional categories were added in Fall 2009. These new categories are Native Hawaiian or Other Pacific Islander, and More than one race. Prior to Fall 2009 only one primary race/ethnicity was reported, and Native Hawaiian or Other Pacific Islander was included in the 'Asian' category.

Source: ODSPROD-Student Enrollment Cube-Point in Time

Fall Enrollment by Gender



Fall Enrollment by Academic Level



Headcount Enrollment by Class in Fall Semesters, 2007-2011

	<u>2007</u>	<u>2008</u>	<u>2009</u>	<u>2010</u>	<u>2011</u>
Undergraduate					
Entering Freshman	2,649	2,568	2,655	2,676	2,599
Other Freshman	640	647	747	809	785
Sophomores	3,082	2,950	2,922	2,937	3,124
Juniors	3,416	3,487	3,560	3,621	3,585
Seniors	4,704	4,841	5,090	5,168	5,170
Unclassified	1,764	1,780	2,050	1,994	1,924
Total Undergraduate	16,255	16,273	17,024	17,205	17,187
Graduate					
Degree Seeking	2,710	2,837	2,782	2,741	2,556
Undecided	383	379	565	526	533
Total Graduate	3,093	3,216	3,347	3,267	3,089
Total, All Students	19,348	19,489	20,371	20,472	20,276

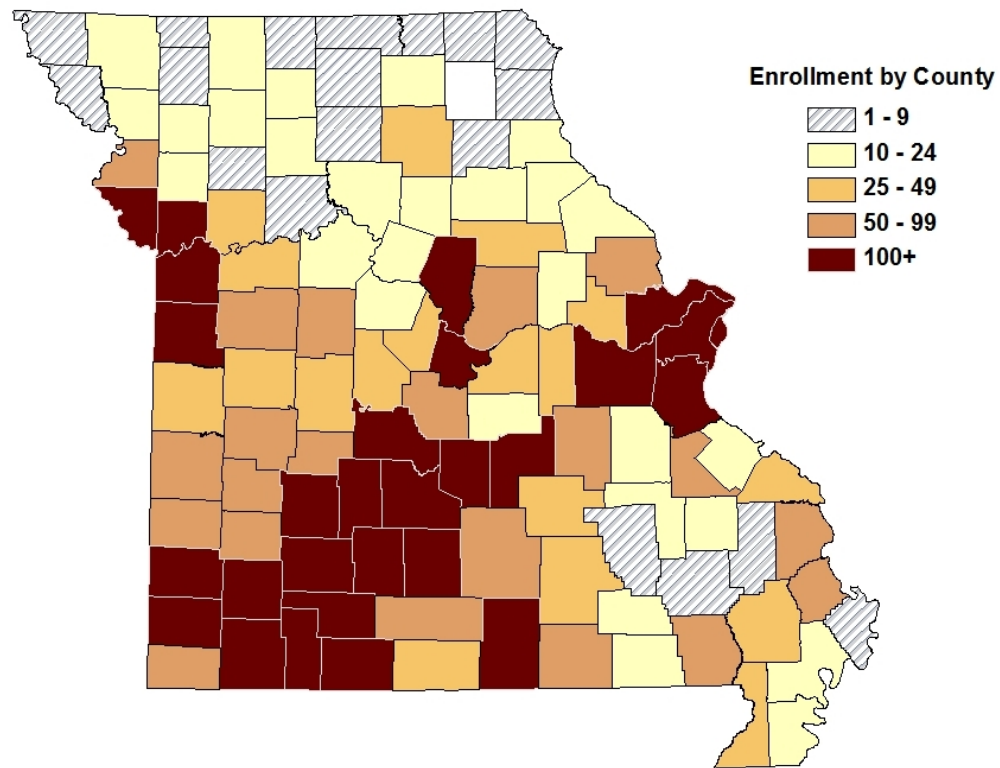
Source – OSPROD-Student Enrollment Cube-Point in Time

Legal Residence of Students in Fall Semesters (% of total), 2007-2011

	<u>2007</u>	<u>2008</u>	<u>2009</u>	<u>2010</u>	<u>2011</u>
Greene County	25.0	24.2	22.3	21.8	21.7
Other Southwest District Counties	24.4	24.3	25.7	25.3	25.4
Kansas City Area	5.9	5.6	5.4	5.4	5.2
St. Louis Area	15.6	15.8	15.7	15.9	16.1
Other Missouri Counties	18.4	18.1	18.2	17.6	17.6
Missouri Total	89.3	88.0	87.3	86	86.0
Other States Total	6.4	6.8	8.1	8.2	7.9
Other Countries Total	4.3	5.2	4.6	5.8	5.8

Source – ODSPROD - Student Enrollment Cube - Point in Time

Student Enrollment by County of Residence - Fall 2011

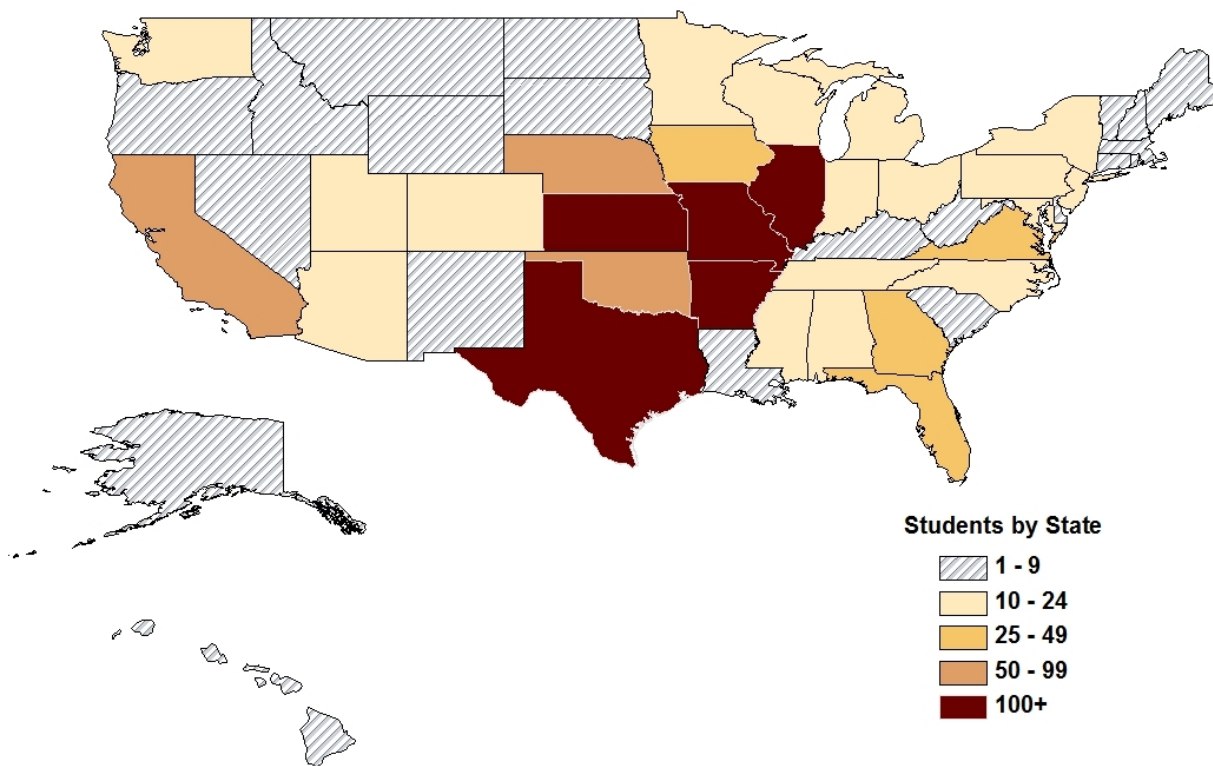


Students from 114 of Missouri's 115 counties attended the Springfield campus of Missouri State University in the fall semester, 2011. Counties contributing 100 or more students include:

Barry	187	Howell	340	Pulaski	156
Boone	138	Jackson	711	St. Charles	1004
Camden	125	Jasper	444	St. Louis	2083
Cass	219	Jefferson	312	St. Louis City	188
Christian	1061	Laclede	212	Stone	283
Clay	349	Lawrence	319	Taney	478
Cole	210	Newton	214	Webster	382
Dallas	122	Phelps	139	Wright	121
Franklin	186	Platte	163		
Greene	4408	Polk	310		

Source - ODSPROD-Student Enrollment Cube-Point in Time

Student Enrollment by State of Residence - Fall 2011



The Missouri State University student body represented all 50 states.

Twelve states (Arkansas, California, Florida, Georgia, Illinois, Iowa, Kansas, Missouri, Nebraska, Oklahoma, Texas, and Virginia) contributed 25 or more students in the fall 2011 semester.

Source - ODSPROD-IPEDS Fall Enrollment, effective Fall 2010

International Student Enrollment, Fall 2011

In the fall of 2011, 1,191 international students from 77 countries attended Missouri State University.

These students came from all parts of the world and included:

- 1,007 from Asia
- 76 from Europe
- 43 from North America, South America, and Central America
- 55 from Africa
- 10 from Australia

China had the largest representation with 680 students.

Source - ODSPROD-Student Enrollment Cube-Point in Time

Credit Hour Production by Course Level by Semester – Springfield Campus

<u>Acad. Year</u>	<u>Semester</u>	<u>Undergraduate</u>	<u>Graduate</u>	<u>Total by Semester</u>
2007-2008	Fall	210,257	17,157	227,414
	Spring	190,209	17,202	207,411
	Summer	23,137	7,528	30,665
	Total by Level	423,603	41,887	465,490
2008-2009	Fall	210,633	17,639	228,272
	Spring	189,697	16,930	206,627
	Summer	20,922	7,469	28,391
	Total by Level	421,252	42,038	463,290
2009-2010	Fall	213,320	22,814	236,134
	Spring	189,647	23,293	212,940
	Summer	21,931	9,577	31,508
	Total by Level	424,898	55,684	480,582
2010-2011	Fall	215,264	23,821	239,085
	Spring	194,125	23,440	217,565
	Summer	21,765	9,179	30,944
	Total by Level	431,154	56,440	487,594
2011-2012	Fall	215,633	22,641	238,274
	Spring	N/A	N/A	N/A
	Summer	N/A	N/A	N/A
	Total by Level	N/A	N/A	N/A

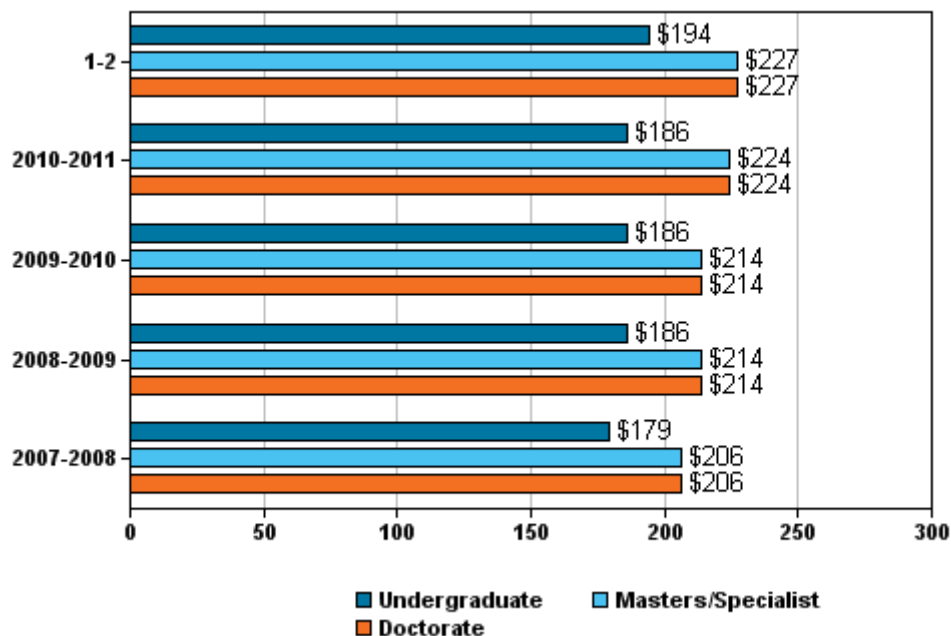
Note: Fall 2009 forward has been adjusted to exclude tracking credit hours. Excludes China Campus, Foreign Study, ELI, Tracking Courses & Exclusive Auditors. Source – IPD 0900 through Summer 2009; ODSPROD – Student Enrollment – Point in Time (course), effective Fall 2009.

Schedule of Resident Student Fees (in dollars) - Springfield Campus

	<u>2007-2008</u>	<u>2008-2009</u>	<u>2009-2010</u>	<u>2010-2011</u>	<u>2011-2012</u>
Basic Fees					
Undergraduate Per Hour Fee	179	186	186	186	194
Masters/Specialist Per Hour Fee	206	214	214	224	227
Doctoral Per Hour Fee	206	214	214	224	227
Doctoral Per Hour Fee (University of Missouri)	287	299	299	305	327
Student Service Fees					
Enrollment in 1-6 Hours	92-240	100-262	106-271	106-271	127-312
Enrollment in over 6 Hours	309	338	348	348	389

Source - MSU 2011-2012 Required Student Fees, Office of the Registrar

Basic Fees Per Hour (in dollars) for Resident Students – Springfield Campus

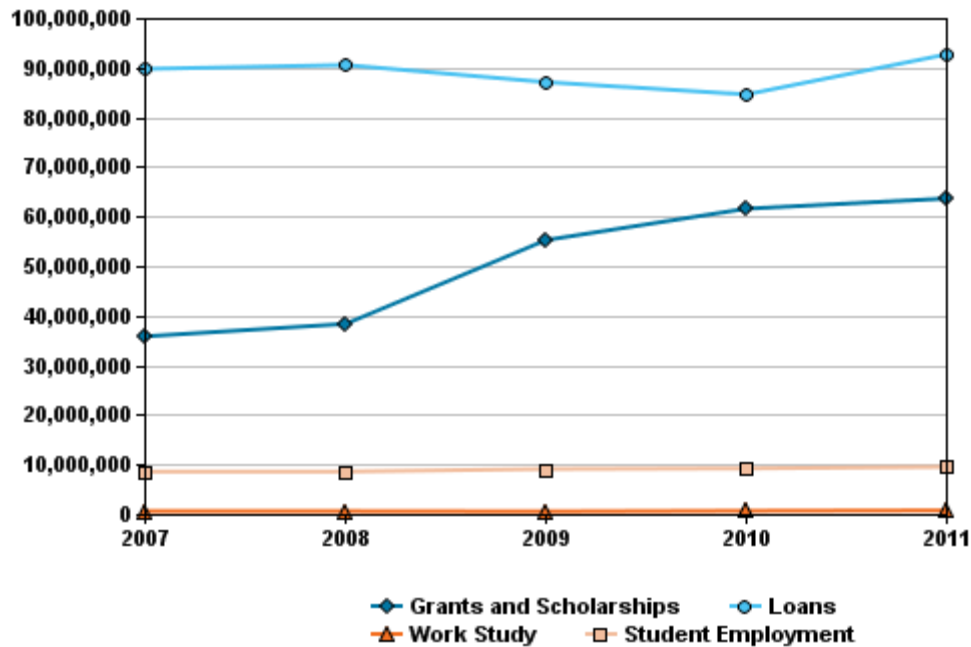


Student Financial Aid (in dollars) - Springfield Campus

Fiscal Year	Grants and Scholarships	Loans	Work Study	Student Employment	Total	Percentage of Total Based on Need
Amounts Granted						
2007	35,802,443	89,736,152	568,490	8,539,316	134,646,401	37.8
2008	38,319,503	90,525,755	570,717	8,556,976	137,972,951	42.5
2009	55,224,890	87,065,682	522,550	9,068,684	151,881,806	41.2
2010	61,548,772	84,593,053	634,687	9,189,980	155,966,492	41.4
2011	63,609,285	92,669,475	710,188	9,486,462	166,475,410	42.5
Students Served						
2007	11,097	21,799	345	2,490	35,731	43.1
2008	13,154	23,447	372	2,119	39,092	52.1
2009	18,564	18,153	307	2,197	39,221	48.6
2010	21,350	19,144	365	1,448	42,307	48.8
2011	20,346	19,155	271	2,163	41,935	49.8

Source -- DHE 14

Financial Aid Granted by Category (in dollars) – Springfield Campus



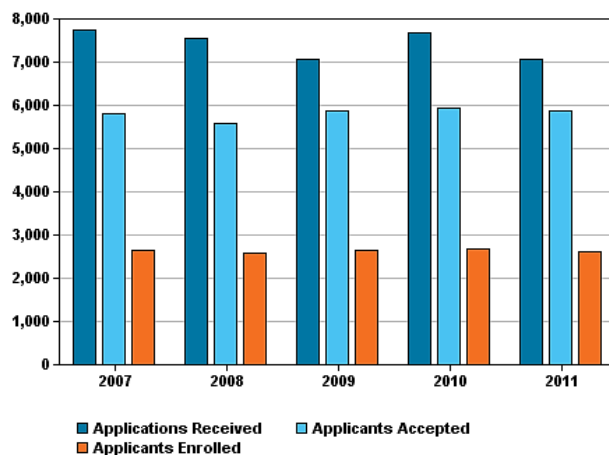
Admissions Summary in Fall Semesters - Springfield Campus

	Number of Applicants	Number of Applicants Accepted	Percent of Applicants Accepted	Number of Actual Enrollments	Percent of Accepted Applicants Enrolled
First-Time Undergraduate					
2007	7,752	5,796	74.8	2,649	45.7
2008	7,538	5,582	74.1	2,568	46.0
2009	7,079	5,875	83.0	2,655	45.2
2010	7,664	5,927	77.3	2,676	45.1
2011	7,072	5,876	83.1	2,599	44.2
Transfer Undergraduate					
2007	2,170	1,754	80.8	1,152	65.7
2008	2,234	1,849	82.8	1,199	64.8
2009	2,101	1,818	86.5	1,431	78.7
2010	2,646	2,221	84.0	1,605	72.3
2011	2,512	2,320	92.3	1,643	70.1
Graduate					
2007	1,537	995	64.7	625	62.8
2008	1,295	837	64.6	610	72.9
2009	1,106	851	86.0	673	70.8
2010	1,093	861	78.8	626	72.7
2011	1,202	941	78.3	689	73.2

Note: Beginning Fall 2009 includes only complete applications; excludes withdrawn students from accepted applicants.

Source -- MDHE 07-2 (transfers), IPEDS EF1, and the Graduate College

First-Time Undergraduate Admissions - Springfield Campus



ACT Standard Scores for First-Time Freshmen – Springfield Campus

	2006-07 N = 2640	2007-08 N = 2430	2008-09 N = 2452	2009-10 N = 2548	2010-11 N=2452
Missouri State Enrolled Norm	23.9	23.9	24.1	24.0	24.3
State Norm	21.5	21.5	21.4	21.5	21.5
National Enrolled Norm	21.7	21.8	21.8	N/A	20.6
Missouri State Enrolled Norm	22.5	22.6	22.9	22.5	22.8
State Norm	21.0	21.0	21.0	20.9	21.0
National Enrolled Norm	21.7	21.8	21.9	N/A	21.1
Missouri State Enrolled Norm	24.2	24.3	24.5	24.2	24.1
State Norm	22.0	22.1	22.0	22.1	21.9
National Enrolled Norm	22.4	22.5	22.5	N/A	21.3
Missouri State Enrolled Norm	22.8	23.0	23.1	23.0	23.2
State Norm	21.5	21.5	21.4	21.5	21.6
National Enrolled Norm	21.7	21.8	21.7	N/A	20.9
Missouri State Enrolled Norm	23.5	23.6	23.8	23.6	23.7
State Norm	21.6	21.6	21.6	21.6	21.6
National Enrolled Norm	22.0	22.1	22.1	N/A	21.1

Source -- ACT Class Profile (MSU - Enrolled) and ACT web site (National & State Norms)

High School Class Rank of First-Time Freshmen in Fall Semesters - Springfield Campus

	<u>2007</u>	<u>2008</u>	<u>2009</u>	<u>2010</u>	<u>2011</u>
Highest 20%	36.9%	37.0%	36.5%	40.4%	37.1%
Fourth 20%	27.8%	24.6%	24.8%	24.4%	24.7%
Third 20%	16.4%	17.9%	16.1%	16.2%	17.5%
Second 20%	6.6%	7.2%	7.4%	6.4%	6.6%
Lowest 20%	1.3%	1.7%	1.8%	1.2%	1.9%
Not Ranked	11.0%	11.6%	13.4%	11.3%	12.2%

Source - ODSPROD - First Time Student Quality Indicators

Cumulative GPA by Student Class in Fall Semesters

	Freshmen	Sophomores	Juniors	Seniors	Special	Undergraduates	Graduates
2006	2.72	2.89	2.97	3.08	3.35	3.02	3.71
2007	2.74	2.93	2.98	3.08	3.50	3.02	3.71
2008	2.64	2.92	2.98	3.09	3.50	3.03	3.71
2009	2.87	2.98	3.03	3.12	3.43	3.06	3.68
2010	2.89	2.97	3.03	3.10	3.26	3.05	3.66

Source - ODSPROD - GPA by College and Department

Note: Special = UG Non-Degree & Precollege

Percentage Distribution of Grades in Fall Semesters

		<u>2006</u>	<u>2007</u>	<u>2008</u>	<u>2009</u>	<u>2010</u>
Excellent	A	40.1%	41.1%	40.1%	41.7%	43.1%
Superior	B	26.9%	26.6%	27.0%	28.3%	28.4%
Satisfactory	C	13.9%	13.5%	13.9%	14.3%	13.7%
Minimum Passing	D	4.3%	4.2%	4.4%	4.5%	4.4%
Unsatisfactory	F	3.5%	3.3%	3.4%	3.7%	3.7%
Incomplete	I	3.4%	3.6%	3.6%	2.1%	1.5%
Drop	N	7.6%	7.4%	7.3%	5.1%	4.9%
Audit	V	0.1%	0.1%	0.1%	0.1%	0.1%
Deferred Grade	Z	0.2%	0.2%	0.2%	0.2%	0.2%

Source – GRA 2500 until 2008, ODSPROD Course/Section Grade Distributions FA 2009 & After (OLAP)

Number of Departmental Majors by College in Fall Semesters, Springfield Campus

	<u>2010</u>	<u>2011</u>		<u>2010</u>	<u>2011</u>
College of Arts and Letters			College of Humanities and Public Affairs		
Art & Design	560	559	Criminology & Criminal Justice	N/A	478
Communication	327	307	Defense & Strategic Studies	73	71
English	563	527	Economics	52	53
Media, Journalism, & Film	449	442	History	381	373
Modern & Classical Languages	111	98	Philosophy	38	31
Music	298	334	Political Science	248	218
Theatre & Dance	214	219	Religious Studies	86	69
Total	2,522	2,486	Sociology & Anthropology	N/A	190
College of Business Administration			Sociology, Anthropol., & Criminology	611	N/A
Computer Information Systems	408	380	Total	1,489	1,483
Fashion & Interior Design	336	304	College of Natural and Applied Sciences		
Finance & General Business	706	786	Agriculture	412	N/A
Industrial Management	360	NA	Biology	653	652
M.B.A.	577	485	Chemistry	205	217
Management	908	888	Computer Science	152	177
Marketing	603	560	Geography, Geology, & Planning	234	249
School of Accountancy	789	834	Hospitality & Restaurant Administration	208	218
Tech & Construction Manag	N/A	343	Natural & Applied Science/Science & Engineering	139	140
Total	4,687	4,923	Mathematics	175	177
College of Education			Physics, Astronomy, & Materials Sci.	101	100
Childhood Education & Family Studies	1,099	1,064	Total	2,279	1,930
Counseling, Leadership, & Special Ed	543	504	Graduate College		
Education/Teacher Certification	136	178	Total	75	83
Reading, Foundations, & Technology	320	297	Miscellaneous		
Total	2,098	2,043	Certificate Enrollments	26	49
College of Health and Human Services			Non-Degreed & Unclassified Grad.	340	307
Biomedical Sciences	499	551	Undeclared Undergraduates	3,572	3,298
Communication Sci. & Disorders	288	283	Total	3,938	4,087
Health, Physical Educ. & Recr.	731	738	University College		
Nursing	558	633	Global Studies	55	52
Physical Therapy	79	97	Interdisciplinary Studies	1	2
Physician Assistant Studies	54	55	Total	56	54
Psychology	705	722	Total of All Students	20,472	20,276
Public Health	29	26			
School of Social Work	233	238			
Sports Med. & Athletic Training	152	187			
Total	3,328	3,530			

Note: All Certificate Only Enrollments were Reported Separately under Miscellaneous
Source – Student Campus-wide Census (ODSPROD-Student Enrollment-Point in Time-Census)



Programs and Degrees

Highlights

- The University offers 88 undergraduate majors with 187 options leading to 10 baccalaureate degrees. There are 113 undergraduate minors offered.
- The University provides 48 graduate majors with 84 options leading to 18 degrees (including 14 masters, 2 doctoral, and 1 specialist)
- Doctorates are offered in Audiology and Physical Therapy.
- The University also offers cooperative degrees with the University of Missouri (Doctor of Education), Missouri University of Science and Technology (Bachelor of Science with majors in Civil and Electrical Engineering), and the University of Missouri-Kansas City (Doctor of Pharmacy, scheduled to begin in 2014).
- Missouri State provides pre-professional programs for students planning to enter fields such as dentistry, engineering, journalism, law, medicine and theology.
- There are 6 undergraduate and 20 graduate certificates available to recognize students who complete a core of prescribe courses designed to significantly increase competency in stated discipline areas.
- In fiscal year 2011, 4635 degrees were conferred.

Definitions:

Major: A general field or program of study. Some majors require than an option (area of emphasis within the major) be chosen. Majors must be approved by the Missouri Coordinating Board for Higher Education. Majors are recorded on the transcripts and diplomas of students who graduate.

Option: A specific set of courses that comprise an area of emphasis within a major. Options are recorded with majors on the transcripts of students who graduate but not on their diplomas. Options must be reported to (but not approved by) the Missouri Coordinating Board for Higher Education.



Program Name

Accounting
 Administrative Studies
 Agricultural Business
 Agriculture Education
 Animal Science
 Anthropology
 Applied Anthropology
 Art
 Art and Design
 Art History
 Athletic Training
 Audiology
 Biology
 Biology Education
 Business Administration
 Business Education
 Cell and Molecular Biology
 Chemistry
 Chemistry Education
 Child and Family Development
 Clinical Laboratory Sciences - Medical Technology
 Communication
 Communication Sciences and Disorders
 Computer Information Systems
 Computer Science
 Construction Management
 Counseling
 Criminology
 Defense and Strategic Studies
 Design
 Dietetics
 Early Childhood and Family Development
 Early Childhood Education
 Earth Science Education
 Economics
 Educational Administration
 Electronic Arts
 Elementary Education
 English
 Entertainment Management
 Entrepreneurship
 Environmental Plant Science
 Exercise and Movement Science
 Facility Management
 Family and Consumer Sciences
 Fashion Merchandising and Design
 Finance
 French
 General Agriculture
 General Business
 Geography
 Geology
 Geospatial Sciences
 Geospatial Sciences in Geography & Geology
 German
 Gerontology
 Global Studies
 Health Administration

Degree

BS, MAcc
 MS
 BS
 BSEd
 BS
 BA, BS
 MS
 BFA
 BA, BSEd
 BA
 BSAT
 AuD
 BA, BS, MS
 BSEd
 MBA
 BSEd
 BS, MS
 BS, MS
 BSEd
 BS
 BS
 BA, BS, MA
 BS, MS
 BS, MS
 BS
 BS
 MS
 BA, BS, MS
 MS
 BFA
 BS
 MS
 BSEd
 BSEd
 BA, BS
 MEd
 BS
 BSEd, MEd
 BA, BSEd, MA
 BS
 BS
 BS
 BS
 BS
 BSEd
 BS
 BS
 BA, BS, BSEd
 BAS, BS
 BS
 BA, BS
 BS
 BS
 MS
 BA, BS, BSEd
 BS
 BA, MGS
 MHA

**Degree
 Programs
 Currently
 Available –
 Springfield
 Campus**

Program Name

Health Promotion and Wellness Management
 History
 Hospitality and Restaurant Administration
 Housing and Interior Design
 Information Technology Service Management
 Interior Design
 Journalism
 Latin
 Literacy
 Logistics and Supply Chain Management
 Management
 Marketing
 Mass Media
 Materials Science
 Mathematics
 Middle School Education
 Music
 Musical Theatre
 Natural and Applied Science
 Natural Resources
 Nurse Anesthesia
 Nursing
 Philosophy
 Physical Education
 Physical Therapy
 Physician Assistant Studies
 Physics
 Physics Education
 Planning
 Plant Science
 Political Science
 Professional Writing
 Project Management
 Psychology
 Public Administration
 Public Health
 Public Relations
 Radiography
 Reading
 Recreation, Sports, and Park Administration
 Religious Studies
 Respiratory Therapy
 Risk Management and Insurance
 Secondary Education
 Social Work
 Socio-Political Communication
 Sociology
 Spanish
 Special Education
 Special Education/Cross Categorical
 Specialist in Education
 Speech and Theatre Education
 Student Affairs
 Teaching
 Technology Management
 Theatre
 Theatre Studies
 Wildlife Conservation and Management
 Writing

Degree

MS
 BA, BSEd, MA
 BS
 BS
 BS
 BS
 BA, BSEd
 MEd
 BS
 BS
 BS
 BA, BS
 MS
 BA, BS, BSEd, MS
 BSEd
 BA, BM, BME, MM
 BFA
 MNAS
 BS
 MS
 BSN, MSN
 BA, BS
 BSEd
 DPT
 MS
 BS
 BSEd
 BS
 MS
 BA, BS
 BA, BS
 MS
 BA, BS, MS
 MPA
 MPH
 BS
 BS
 MEd
 BS
 BA, BS, MA
 BS
 BS
 MEd
 BSW, MSW
 BS
 BA, BS
 BA, BS, BSEd
 MEd
 BSEd
 EdS
 BSEd
 MS
 MAT
 BAS, BS
 BFA, MA
 BA
 BS
 MA

**Degree
 Programs
 Currently
 Available –
 Springfield
 Campus**

Academic Degrees and Certificates Currently Offered

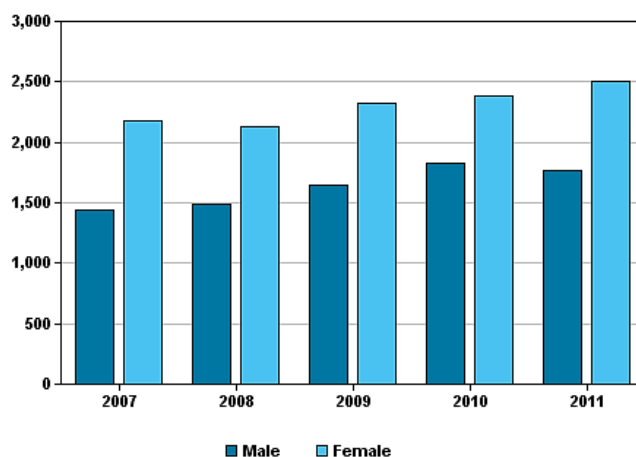
Abbreviation	Degree Name of Certificate Description
BSAT	Bachelor of Science Athletic Training
BA	Bachelor of Arts
BAS	Bachelor of Applied Science
BFA	Bachelor of Fine Arts
BMUS	Bachelor of Music
BME	Bachelor of Music Education
BS	Bachelor of Science
BSed	Bachelor of Science in Education
BSN	Bachelor of Science in Nursing
BSW	Bachelor of Social Work
MA	Master of Arts
MAcc	Master of Accountancy
MGS	Master of Global Studies
MAT	Master of Arts in Teaching
MBA	Master of Business Administration
MHA	Master of Health Administration
MM	Master of Music
MNAS	Master of Natural and Applied Science
MPA	Master of Public Administration
MPH	Master of Public Health
MSEd	Master of Science in Education
MS	Master of Science
MSN	Master of Science in Nursing
MSW	Master of Social Work
EdS	Specialist in Education
AuD	Doctor of Audiology
DPT	Doctor of Physical Therapy
Cert.-PB	Post-Baccalaureate Certificate
Cert.-PM	Post-Master's Certificate
Cert.-UG	Undergraduate, Less Than One Year Certificate

Number of Degrees Conferred – Springfield Campus

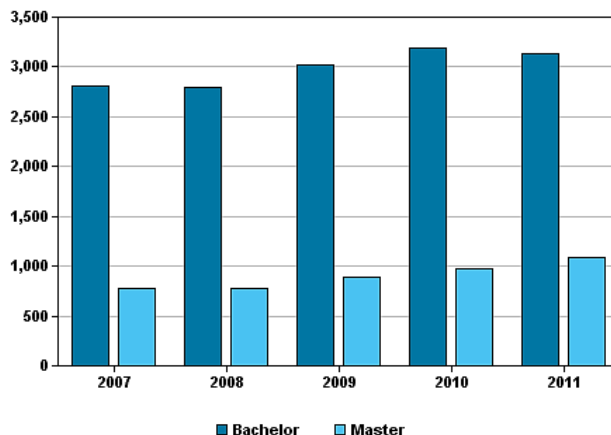
Fiscal Year	By Level						By Gender		Total Degrees
	UG Certificate	Bachelor's	GR Certificate	Master's	Specialist	Doctorate	Male	Female	
2007	N/A	2,807	N/A	777	22	8	1,441	2,173	3,614
2008	N/A	2,795	N/A	773	18	31	1,491	2,126	3,617
2009	N/A	3,015	N/A	889	26	29	1,640	2,319	3,959
2010	N/A	3,185	N/A	978	15	26	1,821	2,383	4,204
2011	16	3,131	75	1,086	30	27	1,766	2,508	4,274

Note: Certificates are not included in Gender or Total Degrees Count Source -- IPEDS-C1 through FY 2009; ODSPROD Degrees Granted FA09 Forward (OLAP), and ODSPROD First & Second Degrees Granted Before FA09 (OLAP)

Degrees Conferred by Gender



Degrees Conferred by Level





Faculty and Staff

Highlights

- The Springfield campus had 701 full-time instructional faculty in Fall 2011, of which 48 percent were female and 63 percent were tenured.
- The average salary of all nine-month instructional staff for 2011-2012 was \$61,647.
- The University had 2,037 full-time employees and another 1,212 employees working part-time in 2011-2012.



Full-Time Instructional Faculty

	2007-2008		2008-2009		2009-2010		2010-2011		2011-2012	
	N	% Tenured	N	% Tenured	N	% Tenured	N	% Tenured	N	% Tenured
Professor										
Men	199	100	196	99	186	99	181	98	181	98
Women	73	100	70	100	70	100	69	100	79	100
Total	272	100	266	100	256	100	250	99	260	99
Associate Professor										
Men	87	95	89	97	91	97	96	95	102	97
Women	64	92	65	67	67	91	69	93	69	90
Total	151	94	154	97	158	94	165	94	171	94
Assistant Professor										
Men	75	19	88	17	70	16	64	14	51	16
Women	61	28	71	21	78	22	84	17	71	17
Total	136	23	159	19	148	19	148	16	122	16
Instructor										
Men	42	-	42	-	40	-	36	-	37	-
Women	96	4	96	4	95	4	106	4	97	3
Total	138	3	138	3	135	3	142	3	134	2
Lecturer										
Men	-	-	-	-	-	-	-	-	-	-
Women	1	-	-	-	-	-	-	-	-	-
Total	1	-	-	-	-	-	-	-	-	-
Other										
Men	10	-	3	-	5	-	1	-	1	-
Women	10	-	20	-	12	-	1	-	1	-
Total	20	-	23	-	17	-	2	-	2	-
All Ranks Combined										
Men	413	72	416	71	388	73	379	74	379	75
Women	305	50	321	48	333	46	320	47	322	48
Total	718	63	737	61	721	60	699	61	701	63

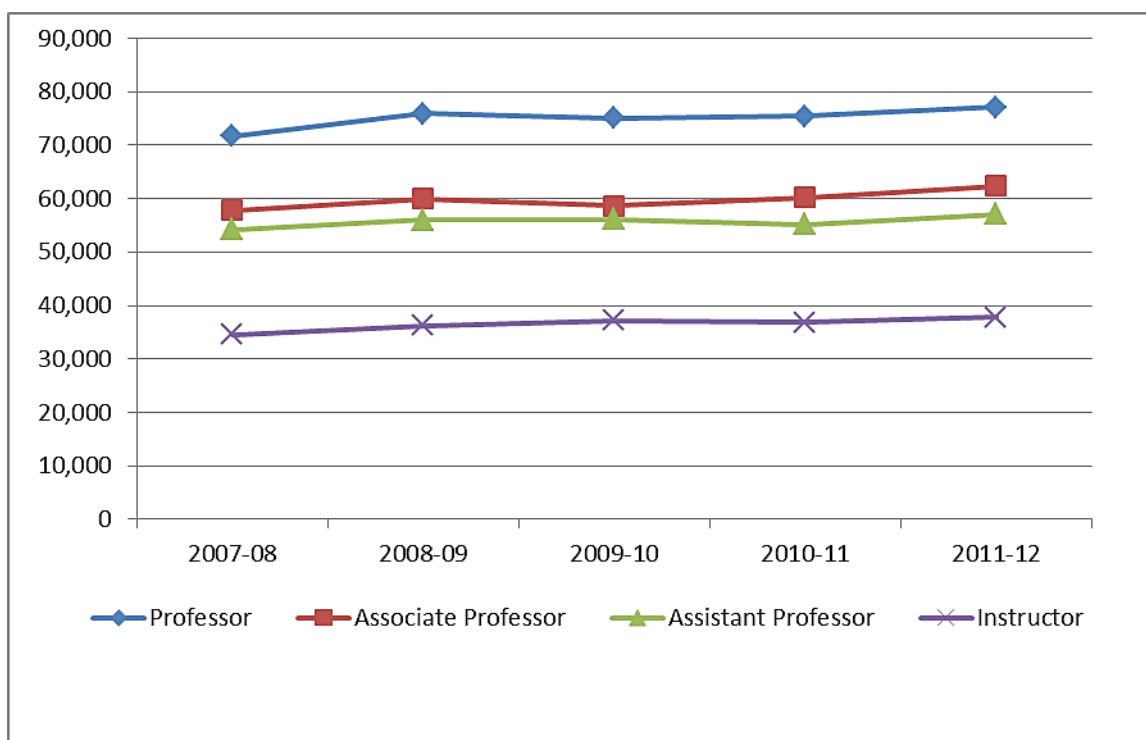
Source -- IPEDS Staff Survey

Average Salary of Nine-Month Instructional Staff

Rank	<u>2007-08</u>	<u>2008-09</u>	<u>2009-10</u>	<u>2010-11</u>	<u>2011-12</u>
Distinguished Professor	77,607	83,548	81,850	78,617	96,765
Professor	71,736	75,863	75,000	75,420	77,147
Associate Professor	57,832	59,967	58,610	60,176	62,322
Assistant Professor	54,262	55,989	56,079	55,193	57,072
Instructor	34,504	36,206	37,193	36,790	37,840
Lecturer	31,595	N/A	N/A	N/A	N/A
All Ranks Combined	57,673	60,192	59,334	59,675	61,647

Source - IPEDS Staff Survey

Average Salary by Rank and Year

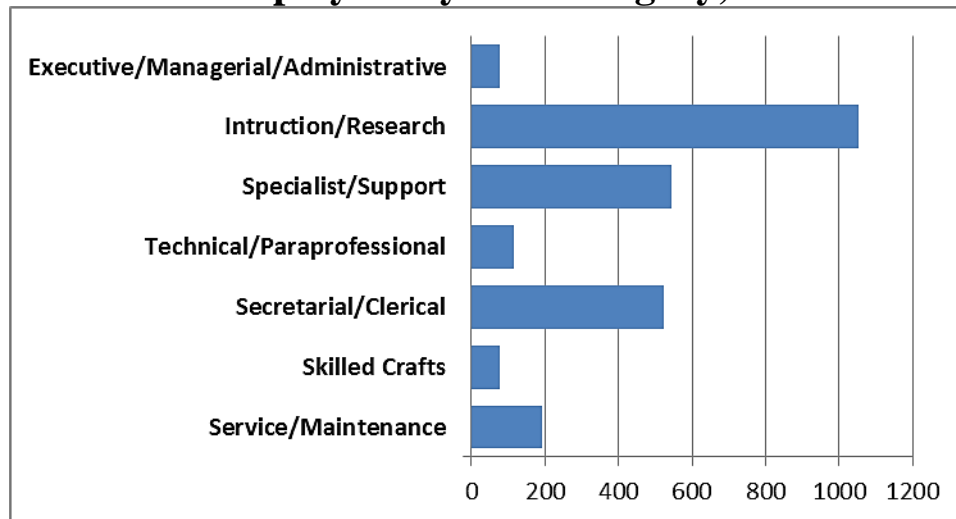


Full-Time and Part-Time Employees by Equal Employment Opportunity (EEO) Category

	2007-2008		2008-2009		2009-2010		2010-2011		2011-2012	
	Full-Time	Part-Time	Full-Time	Part-Time	Full-Time	Part-Time	Full-Time	Part-Time	Full-Time	Part-Time
<u>Exempt</u>										
Exec./Mgr./Admin.	73	-	77	-	77	-	81	-	78	-
Instruction/Research	718	329	737	356	734	306	699	314	701	332
Instruction/Research Assist	-	469	-	489	-	504	-	491	-	484
Specialist/Support	497	57	524	68	554	21	541	17	533	24
Exempt Total	1,288	855	1,338	913	1,365	831	1,321	822	1,312	840
<u>Non-Exempt</u>										
Technical/Paraprof.	95	1	96	-	99	-	112	-	117	-
Secretarial/Clerical	355	452	364	497	360	578	346	412	338	372
Skilled Crafts	75	-	77	-	77	-	72	-	78	-
Service/Maintenance	193	-	193	-	196	-	188	-	192	-
Nonexempt Total	718	453	730	497	732	578	718	412	725	372
Employee Total	2,006	1,308	2,068	1,410	2,097	1,409	2,039	1,234	2,037	1,212
Full-Time Equivalent	2,006	599	2,068	645	2,097	654	2,039	567	2,037	551

Source - IPEDS Staff Survey

Full-Time Employees by Job Category, 2011-2012



Highest Degree Held by Faculty and Professional Staff, 2011-2012

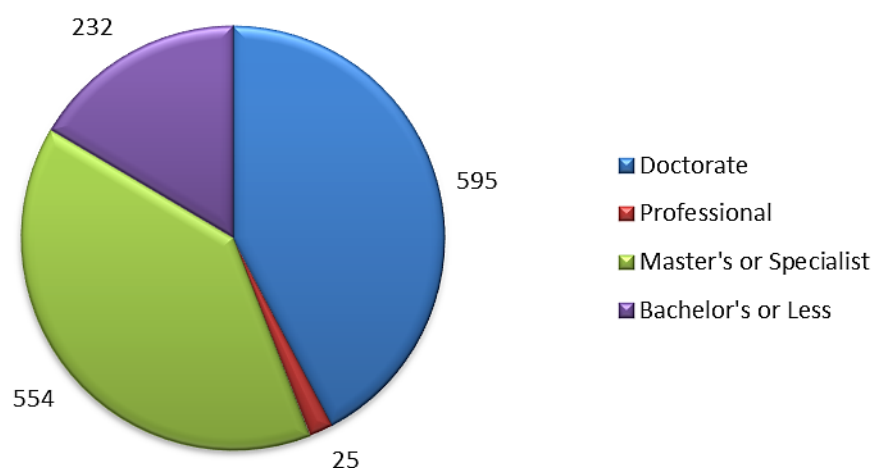
EEOC* Category	Doctorate	Professional	Master's or Specialist	Bachelor's or Less	Total
Full-Time					
Executive/Managerial/Admin.	28	3	29	11	71
Instruction/Research	501	13	182	5	701
Specialist/Support	13	1	175	139	328
Part-Time					
Per Course Faculty	52	8	164	67	291
Specialist/Support	1	-	4	10	15
Total	595	25	554	232	1,406

Note: *Equal Employment Opportunity Commission.

Note: Totals do not match totals by EEO Categories reported on previous page because degree attainment information has not been fully imported into the new ERP system.

Source – IPEDS Fall Staff Survey

Degrees of Faculty and Professional Staff





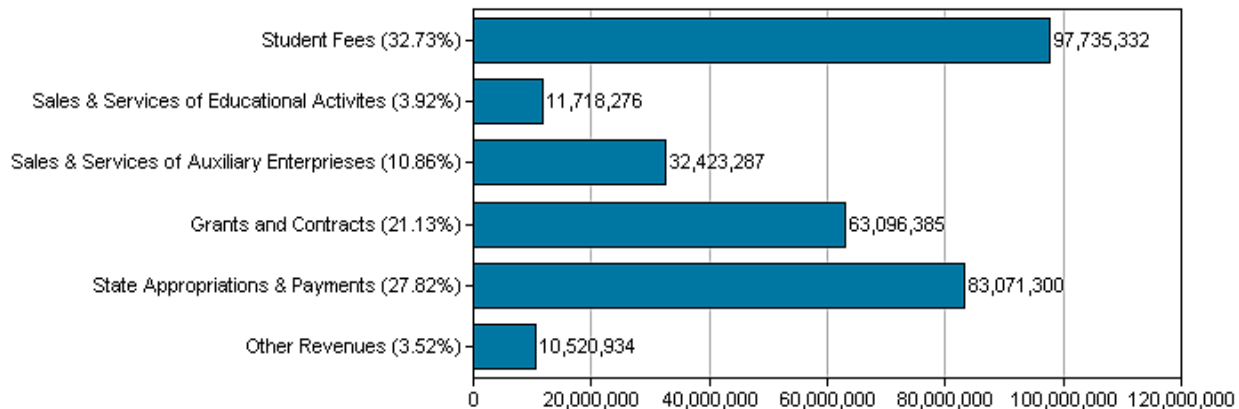
Financial Resources

Highlights

- The fiscal year 2010-2011 state appropriations and payments constituted 28 percent of the \$300 million in total revenues to the University. Student fees accounted for over \$97 million or 33 percent of the revenues.
- Instruction accounted for 33.9 percent of the total University expenses.
- Salaries comprised 46.4 percent of the operating expenses for fiscal year 2011.
- The Office of Sponsored Research and Programs assisted faculty and staff in obtaining \$18.7 million from external funding sources in fiscal year 2011.



Revenues (in Dollars), Fiscal Year 2011



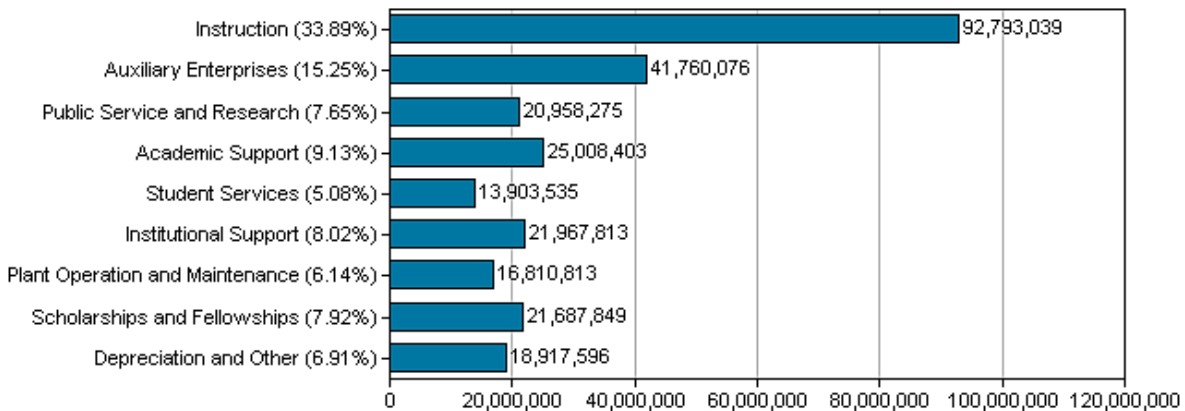
Revenues (in dollars)

	FY2007	FY2008	FY2009	FY2010	FY2011
<u>Operating Revenues</u>					
Student Fees	77,624,110	79,399,259	82,710,569	96,686,518	97,735,332
Sales & Service of Edu. Activities	12,596,222	12,732,949	18,150,174	10,782,382	11,718,276
Federal Grants and Contracts	27,787,381	25,003,326	34,267,313	44,248,075	44,439,455
State Grants and Contracts	1,772,990	4,937,812	7,322,289	8,070,685	8,152,042
Private Grants and Contracts	7,516,502	13,457,343	6,469,756	5,510,496	10,504,888
Sales & Services of Aux. Enterprises	33,480,336	33,822,218	34,877,413	32,169,659	32,423,287
Other Sources	2,876,781	3,053,593	2,947,729	3,648,113	2,014,388
Total Operating Revenues	163,654,322	172,406,500	186,745,243	201,115,928	206,987,668
<u>Non-Operating Revenues</u>					
State Appropriations and Payments	79,792,171	85,015,416	98,182,686	90,828,486	83,071,300
Gifts	4,738,063	5,413,824	11,217,856	11,215,059	12,020,759
Investment Income	5,394,985	6,441,558	3,066,743	11,381,894	972,447
Interest on Capital Asset-Related Debt	-2,673,293	-4,376,132	-3,084,279	-4,323,028	-4,319,367
Other Non-Operating Rev. & Exp.	-	-	-	2,305	-
Gains on Disposal of Fixed Assets	87,864	-135,722	8,502	49,447	-167,293
Total Non-Operating Revenues	87,339,790	92,358,944	109,391,508	109,154,163	91,577,846
Total of All Revenues	250,994,112	264,765,444	296,136,751	310,270,091	298,565,514

Note: The University used the new required GASB rules of accounting set out in GASB Bulletin #35

Source -- MSU Financial Reports (Baird, Kurtz, & Dobson)

Operating Expenses (in Dollars), Fiscal Year 2011



Operating Expenses

	FY2007	FY2008	FY2009	FY2010	FY2011
Instruction	82,257,284	87,559,861	93,542,440	93,051,099	92,793,039
Research	14,728,163	15,286,566	16,813,426	15,785,375	13,457,605
Public Service	8,619,947	9,489,494	9,649,667	8,407,656	7,500,670
Academic Support	23,087,065	24,994,065	27,592,616	25,992,923	25,008,403
Student Service	11,463,665	12,121,370	12,666,370	13,173,400	13,903,535
Institutional Support	18,295,397	19,190,983	22,011,693	22,072,024	21,967,813
Plant Operation & Maintenance	16,828,787	19,522,517	20,248,599	16,992,106	16,810,813
Scholarships & Fellowships	8,415,248	9,843,122	13,525,121	23,158,212	21,687,849
Other	-	-	-	-	-
Depreciation	13,619,146	14,247,820	16,344,581	18,558,372	18,917,596
Auxiliary Enterprises	34,079,645	34,919,444	36,081,737	39,903,571	41,760,076
Mandatory Transfers	-	-	-	-	-
Total of All Expenses	231,394,347	247,175,242	268,476,250	277,094,738	273,807,399

Note: The University used the new required GASB rules of accounting set out in GASB Bulletin #35

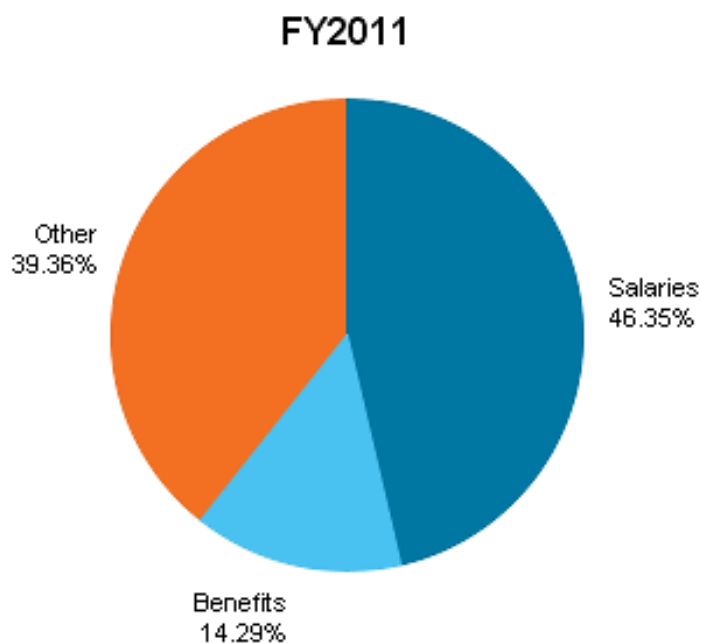
Source -- MSU Financial Reports (Baird, Kurtz, & Dobson)

Operating Expenses by Category (in dollars) Fiscal Year 2011

<u>Fund Category</u>	<u>Salaries</u>	<u>Benefits</u>	<u>Other</u>	<u>Total</u>
Instruction	62,621,801	19,486,953	10,684,285	92,793,039
Research	5,866,459	1,802,174	5,788,972	13,457,605
Public Service	3,202,481	975,869	3,322,320	7,500,670
Academic Support	14,178,783	4,507,021	6,322,599	25,008,403
Student Services	6,598,840	2,012,894	5,291,801	13,903,535
Institutional Support	14,077,349	4,475,002	3,415,462	21,967,813
Plant Operation and Maintenance	5,534,777	1,755,701	9,520,335	16,810,813
Scholarships and Fellowships	557,917	57,006	21,072,926	21,687,849
Other	-	-	-	-
Depreciation	-	-	18,917,596	18,917,596
Auxiliary Enterprises	14,272,780	4,061,370	23,425,926	41,760,076
Total	126,911,187	39,133,990	107,762,222	273,807,399

Source - MSU Financial Reports (Baird, Kurtz, & Dobson)

Operating Expenses by Expense Category



Revenues and Expenses (in dollars) Budgeted

	Budgeted FY 2011		<u>Total</u>
	<u>Unrestricted</u>	<u>Restricted</u>	
Revenue			
Tuition & Fees	121,615,967	7,525	121,623,492
Federal Grants & Contracts	150,000	41,322,862	41,472,862
State Appropriations	76,962,605	-	76,962,605
State Grants & Contracts	-	10,463,388	10,463,388
Private Gifts/Grants/Contracts	3,027,413	12,512,470	15,539,883
Investment Income	461,100	-33	461,067
Sales & Services	8,649,046	30,326	8,679,372
Other Sources	982,592	349,717	1,332,309
Total Revenues	211,848,723	64,686,255	276,534,978
Expenses			
Instruction	90,984,840	1,262,741	92,247,581
Research	2,341,200	10,879,505	13,220,705
Public Service	4,145,764	2,090,663	6,236,427
Academic Support	25,741,763	867,646	26,609,409
Student Services	16,290,976	736,804	17,027,780
Institutional Support	29,954,010	808,755	30,762,765
Plant Operation & Maintenance	18,575,436	20,655	18,596,091
Scholarships & Fellowships	24,982,341	39,045,628	64,027,969
Transfers	-1,637,411	186,309	-1,451,102
Total Expenses	211,378,919	55,989,706	267,277,625

Source -- FY13 State Appropriations Request - Forms 1 & 2

Office of Sponsored Research and Programs

The Office of Sponsored Research and Programs (SRP) is a "help center" for faculty and staff interested in pursuing external funding. The SRP staff provides individualized service to help University personnel: (a) identify potential funding sources; (b) organize project development teams; (c) edit proposals; and (d) develop project budgets. SRP coordinates the submission of proposals; provides guidance on compliance issues; assists in the start-up of funded projects; offers guidance on the protection and transfer of University-owned intellectual property; and leads training seminars for faculty and staff.

What is the University accomplishing with external funding?

- **Research** projects such as the one that will be used to involve students in obtaining high-speed multicolor observations of at least six pulsating sdB stars and time-series spectroscopic data, which will be used to generate perturbed atmospheric and evolutionary models.
- **Education** projects such as the one funded by U.S. EPA and the Missouri Department of Natural Resources, to instruct Missouri students and citizens concerning water topics that include nonpoint source pollution.
- **Service** projects that will assist KOZK-TV with its annual operating costs.

Externally-funded projects such as these promote multidisciplinary collaborations within the University, joint ventures with business and industry, partnerships with K-12 schools, collaborations with other community organizations, and alliances with other higher education institutions.

Outside funding, in the form of grants and contracts, provides millions of dollars to support University-based projects each year. It is critical that the University continue to find new funding sources to sustain existing research, education, and service programs and develop new ones. Outside funding enhances teaching, learning, and research opportunities for faculty and staff, enables students to gain valuable experience, and supports local and statewide programs. These projects strengthen collaborative efforts between the University, community and statewide organizations.

The University received \$18.7 million from external sources in FY 2011. This was a 7% decrease from funding obtained in FY 2010 of \$20.1 million. However, in light of ongoing economic issues, and the funding sources that continue to suffer budget cuts, this should still be considered a commendable achievement for faculty and staff of Missouri State University.

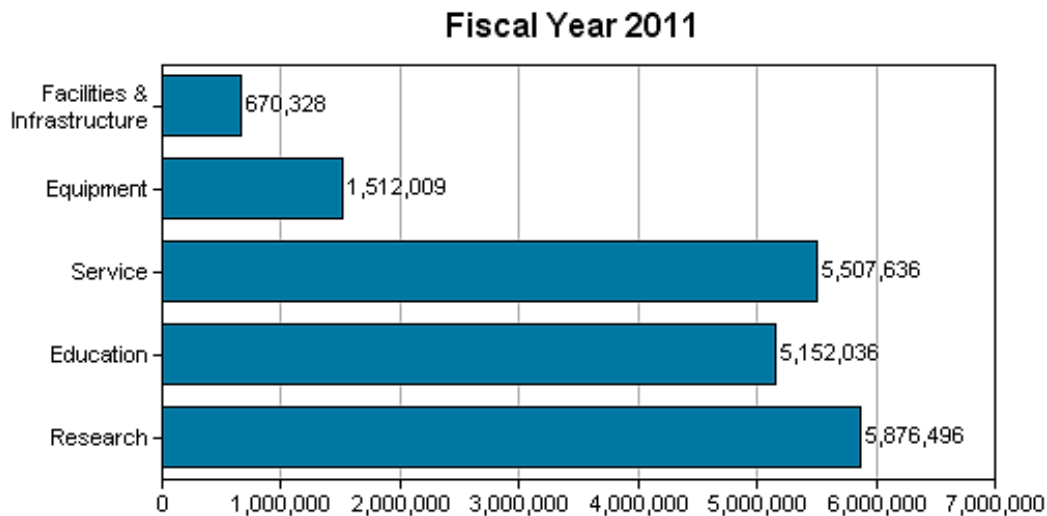
In FY 2011, the University submitted 244 proposals for support of new or on-going projects. The University received 153 awards in the form of grants or contracts totaling \$18,718,505. Of the total awards, 29% were for education projects, 30% for research and other scholarly projects, 38% were for community service projects, and 3% was primarily used for facilities and infrastructure. Of the total awards, 13% were from state agencies, 55% were from federal agencies, and 11% from non-profit organizations.

Sponsored Projects Activity: Comparison of Awards

Award Use	<u>FY 2007</u>	<u>FY 2008</u>	<u>FY 2009</u>	<u>FY 2010</u>	<u>FY 2011</u>
Research	11,758,291	13,210,960	5,260,877	4,000,564	5,876,496
Education	3,158,303	4,557,500	4,279,029	3,010,196	5,152,036
Service	6,811,071	3,722,707	7,496,108	7,012,689	5,507,636
Equipment	51,490	-	2,499,254	1,098,302	1,512,009
Facilities & Infrastructure		998,727	1,365,767	4,986,509	670,328
Total	21,779,155	22,489,894	20,901,035	20,108,260	18,718,505

Source -- Office of Sponsored Research

Primary Use of Funds Awarded



Source -- Office of Sponsored Research



Facilities

Highlights

- The Springfield campus includes 41 educational and general buildings and 20 auxiliary enterprise facilities.
- Currently, 3,675 students are living in University housing, including 2,070 first-time freshmen.
- Over 56% of students in University housing are classified as first-time freshmen.
- The Missouri State University Library collection includes over 610,000 books, over 958,000 government documents, and over 30,000 journals are available on-line in full-text.



Classification of Students in University Housing by Level

	First-Time Freshmen	Other Freshmen	Sophomores	Juniors	Seniors	Graduates	Others	Total
2007	2,149	337	754	320	203	109	24	3,896
2008	2,078	352	750	330	204	108	33	3,855
2009	2,212	356	802	294	178	93	-	3,935
2010	2,129	410	750	308	194	82	-	3,873
2011	2,070	431	727	280	151	16	-	3,675

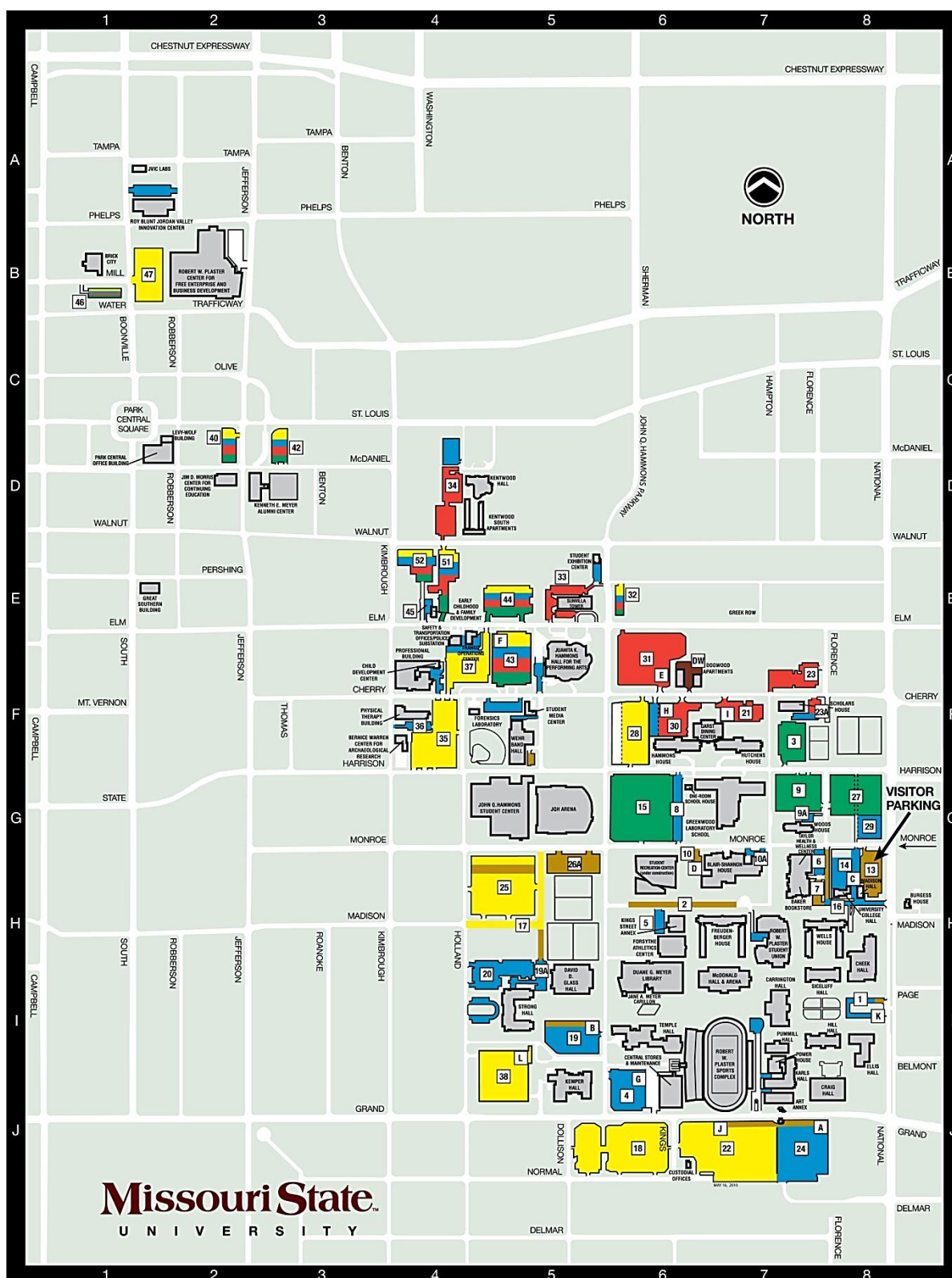
Source -- Residence Life and Services

Classification of Students in University Housing by Housing Unit, 2010

Residence Hall	First-Time Freshmen	Other Freshmen	Sophomores	Juniors	Seniors	Graduates	Others	Total
Blair-Shannon House	466	57	126	26	8	-	-	683
Freudenberger House	507	62	79	27	4	1	-	680
Hammons House	377	52	78	19	10	-	-	536
Hutchens House	241	75	153	49	15	-	-	533
Kentwood Hall	6	12	29	30	22	2	-	101
Scholars House	41	-	30	17	12	-	-	100
Sunvilla Tower	2	56	47	66	47	12	-	230
Wells House	199	70	133	36	26	1	-	465
Woods House	231	47	52	10	7	-	-	347
Headcount by Level	2070	431	727	280	151	16	0	3675
Percentage by Level	56.33	11.73	19.78	7.62	4.11	0.44	0.00	100%

Source -- Residence Life and Services

Springfield Campus Map



General Characteristics of Major Physical Facilities, 2011-2012

<u>Educational and General Service Facilities</u>	<u>Year Completed</u>	<u>Original Cost</u>	<u>Replacement Cost</u>	<u>Gross Square Feet</u>	<u>Assignable Square Feet</u>
Alumni Center	1972	N/A	11,849,060	80,452	58,307
Archaeological Research	1975	88,750	717,933	4,742	3,945
Art Annex	1948	113,666	2,914,809	19,591	14,840
Bear Park North	1995	N/A	14,317,200	360,000	1,296
Bear Park South	2006	N/A	14,733,990	370,480	N/A
Burgess House	N/A	N/A	548,128	3,742	2,728
Carrington Hall	1908	201,393	15,820,219	106,936	56,529
Cheek Hall	1955	599,982	13,150,108	88,572	49,520
Craig Hall	1967	1,724,800	13,646,157	86,168	46,063
Darr Agriculture Center - Pinegar Arena	1989/2006	363,555	7,422,030	72,457	66,546
Darr Agriculture Center- Bond Learning Center	N/A	N/A	N/A	27,331	N/A
Ellis Hall	1959	826,991	7,538,151	45,198	26,136
Forsythe Athletic Center	1980	780,316	6,171,967	41,324	26,638
Glass Hall	1987	12,408,345	27,078,148	176,094	159,406
Greenwood Lab School	1966	857,246	8,923,260	65,062	48,195
Hill Hall	1924	300,204	10,382,089	69,878	52,000
Jordan Valley Innovation Ctr.	N/A	N/A	13,815,481	51,610	45,367
Karls Hall	1958	290,420	7,694,337	46,003	27,582
Kemper Hall	1976	2,569,818	13,842,236	65,138	51,006
Kings Street Annex	1982	794,274	4,057,733	27,247	16,243
Madison Hall	N/A	N/A	1,307,421	8,760	9,183
McDonald Arena	1940	443,091	18,438,171	114,118	87,724
Meyer Library	1980	5,477,708	43,294,194	245,361	183,533
Morris Center	1912	N/A	8,732,335	58,648	60,561
One Room School House	N/A	N/A	73,734	600	563
Physical Therapy	N/A	3,066,500	N/A	22,891	22,761
Power Plant	1908	21,000	23,039,255	17,478	13,760
Professional Bldg.	1940	1,575,000	25,095,894	140,258	133,837
Pummill Hall	1957	641,757	5,947,700	41,948	37,971
Siceluff Hall	1927	305,375	9,635,782	64,944	33,764
Stores & Maintenance	1977	495,367	2,397,645	30,175	30,175
Strong Hall	1998	N/A	27,516,552	185,440	152,334
Student Exhibition Center	1894	62,500	1,167,326	6,548	6,043
Student Media Center	N/A	N/A	N/A	3,061	2,040
Taylor Health	N/A	N/A	N/A	N/A	N/A
Temple Hall	1971	3,601,473	28,393,061	142,202	137,147
Transit Operations	1974	N/A	472,984	3,210	2,945
University Hall	N/A	N/A	1,703,286	11,387	N/A
Wehr Band Hall	1996	N/A	7,503,882	50,531	23,668

<u>Auxiliary Enterprise Facilities</u>	<u>Year Completed</u>	<u>Original Cost</u>	<u>Replacement Cost</u>	<u>Gross Square Feet</u>	<u>Assignable Square Feet</u>
Baker Bookstore	N/A	N/A	N/A	N/A	N/A
Blair-Shannon House	1966	N/A	28,179,640	192,389	128,285
Elm Apartments	N/A	50,000	610,031	12,162	10,688
Forensic Lab.	N/A	N/A	263,664	1,800	1,660
Freudenberger Hall	1959	N/A	24,139,760	164,632	109,143
Garst Dining Center	N/A	N/A	3,657,287	20,739	31,881
Hammons House	1986	12,000,000	23,476,478	160,526	165,977
Hammons Student Center	1976	5,556,981	20,363,395	173,514	106,838
Hutchens House	N/A	N/A	24,343,207	166,447	165,329
JQH Arena	2008	67,000,000	N/A	N/A	N/A
Juanita K. Hammons Hall for the Performing Arts	1992	N/A	19,996,063	125,000	62,500
Kentwood Hall	1926	850,000	7,816,528	53,451	43,711
Plaster Sports Complex	1930	N/A	19,921,157	90,842	128,854
Plaster Student Union	1951	N/A	16,531,935	155,900	81,174
Scholars House	1992	N/A	5,386,604	36,834	29,007
Sunvilla Tower	1963	1,581,241	19,622,805	132,826	144,774
Wells House	1950	244,159	17,573,782	119,368	110,703
Woods House	1971	1,933,496	11,889,605	81,298	72,184

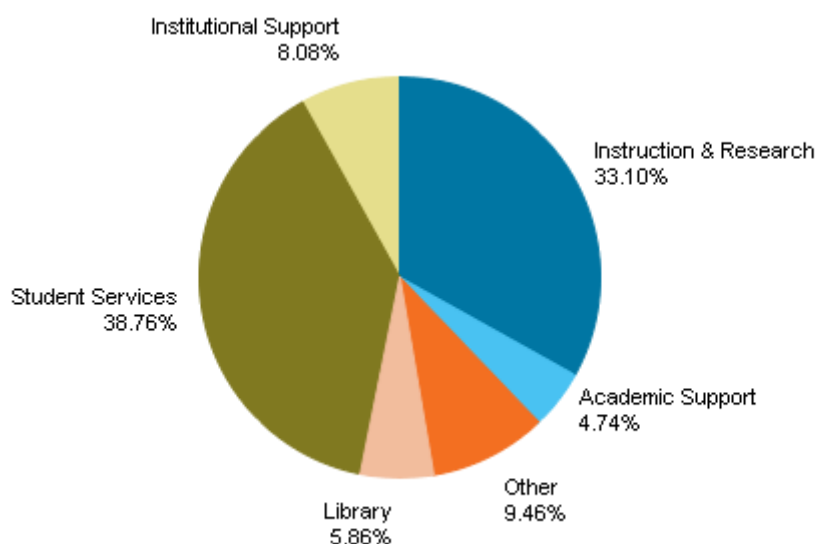
Source - FAC 0056

Distribution of Assignable Building Space (in sq. ft.) by Room Use & Program Area, 2010-2011

Program Area	Classroom	Lab	Office	Study Facility	Special Use Facility	General Use Facility	Support Facility	Health Care Facility	Residential Facility	Unclassified	Total
Instruction	220,115	252,641	187,764	911	96,033	19,823	14,986	3,521	863	3,385	800,042
Research	44	34,914	8,110	-	423	290	1,840	-	-	-	45,621
Public Service	-	-	5,131	-	5,505		211	-	-	-	10,847
Library	1,511	406	18,657	124,651	4,217	-	161	-	-	81	149,684
Academic Support	23,199	5,387	21,100	2,107	17,961	46,145	5,130	-	-	-	121,029
Student Services	-	828	39,096	12,462	153,346	172,242	36,691	6,255	569,401	-	990,321
Institutional Support	635	1,338	178,761	-	2,664	1,068	21,832	-	-	55	206,353
Physical Plant	356	614	5,312	102	-	707	98,790	-	-	215	106,096
Unassigned			25,071		4,437	43,411	583		51,259		124,761
Total	245,860	296,128	489,002	140,233	284,586	283,686	180,224	9,776	621,523	3,736	2,554,754

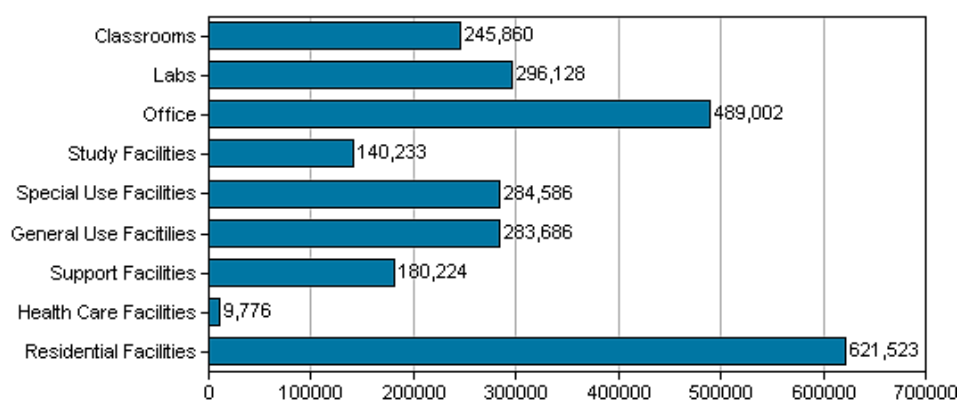
Source - Office of Institutional Research (FAC 0061)

Building Space by Program Area (by percentage), 2009-2010



Source -- Office of Institutional Research (FAC 0061)

Building Space (in sq. ft.) by Room Use, 2010-2011



Source -- Office of Institutional Research (FAC 0061)

University Libraries

The Missouri State University library system is comprised of the Duane G. Meyer Library the Horace and "Pete" Haseltine Library in the Greenwood Laboratory School, and the Paul G. Evans Library of Fruit Science on the Mountain Grove Campus. These three libraries have collections of over 2,850,000 items including more than 610,000 accessioned volumes; subscriptions to over 4,330 periodicals, newspapers and other serials; and extensive back files of journals and newspapers, many in micro-format. The Music Library was reincorporated into Meyer Library during the summer of 2010. Over 30,000 journals are available on-line with full-text. Total microform holdings amount to over one million items. More than 958,000 state, federal, and United Nations documents are held as a result of Meyer Library being a designated depository library for each of those areas. Meyer Library is the only UN depository library in the state of Missouri. It also has a Maps Collection with over 207,708 maps, atlases, aerial photographs and globes. A large collection of audio and video material is fully cataloged and available from the Music and Media Collections. Special Collections and Archives house a number of special groups of materials: the William J. Jones collections of Rimbaud and Butor French Literature; the Ozarks Labor Union Archives that document regional labor history; the Ozarkiana Collections covering life and culture in the Ozarks, and the University Archives which have been enhanced by several grants for organizing and processing these materials. The Curriculum Resource Center features a children's literature collection, a textbook collection, curriculum guides, and special learning materials.

OCLC WorldCat, a database with more than 244 million bibliographic records, is utilized for cataloging and for interlibrary loan and reference, with links to over 72,000 libraries in 170 countries. The statewide MOBIUS consortium, with a membership of 61 libraries, is simplifying access to regional holdings. The MOBIUS database of over 23 million items can be used by faculty, students and staff to borrow items with a three to four day delivery time from anywhere in the state.

Electronic access is provided to reference resources, course reserve materials and licensed commercial citation and full-text databases through the Libraries' homepage (<http://library.missouristate.edu>). Almost 190 electronic resources are available to the Missouri State University community and they were used more than 249,000 times during the year. In addition to citations from thousands of journals, newspapers, and books, these databases contain articles from over 30,000 full-text journals and newspapers. Access is available both on and off-campus for current MSU students, faculty, and staff. During the fall and spring semester, Meyer Library is open 110 hours a week. Librarians and/or support staff are available all hours of operation to assist patrons. In 2010-2011, over 623,428 people entered the libraries and during this time, the Libraries' Web server served out over 5.6 million pages. MSU electronic resources were used over 249,000 times during the year. The top four resources were *Academic Search Premier*, *JSTOR*, *Lexis-Nexis Academic*, and *PsycINFO*.

In the fall of 2002, the addition to, and renovation of the Duane G. Meyer Library was completed. Space for the library was doubled and now includes 10 large group study rooms, 11 small ones, and 8 research carrels which are assigned to graduate students and faculty. Meyer Library also includes an auditorium, three classrooms, a computer lab, assistive technology, media production facilities, a wide variety of study spaces, and a coffee shop and lounge. There is wireless access throughout Meyer Library. In the summer of 2009, the Bear CLAW (Center for Learning and Writing) was incorporated in Meyer Library. This move brings together Tutoring Services, the Writing Center, and Library Services and provides an enhanced learning environment for students. A central feature of the Library and of the campus is the Jane A. Meyer Carillon with its complement of 48 bronze bells.

Circulation Statistics

	Greenwood	Music	Maps	Audio-Visual	General Circulation	All Circulation
2006-2007	10,052	9,132	421	11,086	97,934	128,625
2007-2008	10,433	8,010	529	11,091	92,510	122,573
2008-2009	9,930	8,286	301	7,453	88,226	114,196
2009-2010	9,834	7,205	278	6,128	83,054	106,499
2010-2011	10,049	9,770	340	4,530	71,924	96,613

Note: *Media includes Media Reserves.

Source -- Meyer Library Head of Access Services

Collection at End of Academic Year

	Book Stock (volumes)	Separate Government Documents	Microforms (Books and Periodicals)	Audio-Visual and Others	Serial Subscriptions (Titles)*	Maps and Charts, etc.
2006-2007	877,968	934,060	1,052,181	37,148	3,511	178,766
2007-2008	890,330	926,148	1,053,333	37,583	3,550	178,990
2008-2009	900,738	929,696	1,054,262	37,400	3,534	179,156
2009-2010	612,468	944,079	1,054,555	23,275	3,314	207,575
2010-2011	610,751	958,154	1,054,806	20,604	4,330	207,708

*Through data-base subscriptions, there is access to over 20,000 full-text serials

**Changed method of counting items

***Bound serial volumes are no longer counted in this number

Source – Meyer Library Head of Access Services

Library Expenditures

	Books	Periodicals and Serials*	Audio- Visual	Salaries and Fringe Benefits	Other Library Expenses	Total Library Expenses
2006-2007	292,517	1,627,964	29,223	3,311,790	423,529	5,685,023
2007-2008	269,210	1,807,879	17,895	3,370,039	458,942	5,923,965
2008-2009	226,164	1,908,799	26,810	3,551,791	421,304	6,134,868
2009-2010	226,101	1,974,439	24,760	3,392,188	406,860	6,024,348
2010-2011	187,772	1,978,573	23,027	3,302,320	474,685	5,966,378

*Includes cost of binding materials

Source - Meyer Library Head of Access Services



Missouri State University – West Plains

Highlights

- The West Plains campus is the "open admission" campus within the Missouri State University System.
- The campus offers one-year certificates and two-year associate degrees.
- A total of 2,142 students enrolled at the West Plains Campus during Fall 2011.
- Female students comprise 60% of the enrollment, and 40% of students attend part-time.



Campus History and Setting

Missouri State University-West Plains was established in 1963 as the West Plains Residence Center, and is a semiautonomous, two-year campus within the Missouri State University system. Consistent with the university mission, Missouri State University-West Plains is a teaching and learning institution of higher education offering two-year associate of arts, associate of science and associate of applied science degrees; certificates; and a variety of continuing education courses as needed by employers and citizens of the area served.

In addition to courses and programs offered in West Plains, Missouri State University-West Plains offers the Associate of Arts degree in General Studies (AA) at the Extended Campus, Shannon Hall, in Mountain Grove, Missouri.

Missouri State University-West Plains is located 110 miles southeast of Springfield, Missouri, in the community of West Plains, Missouri. The campus consists of five classroom and administrative buildings: Kellett Hall, Looney Hall, Melton Hall, Lybyer Technology Center and the Respiratory Therapy building. In addition, the campus includes the Garnett Library, a 60-person residence hall called the Grizzly House, the Putnam Student Center, the V.H. Drago College Store, and the Smith-London Centennial Bell Tower. Student Services are all located in Cass Hall. Maintenance and custodial operations are located in the Broadway Building, and the Richards House serves as the residence for the Missouri State University-West Plains Chancellor. The college primarily attracts students from a seven-county area of the south-central Missouri Ozarks region and from adjacent counties in north Arkansas.

Mission

Missouri State-West Plains is a teaching and learning institution providing quality post-secondary educational opportunities to the communities served through a commitment to achieving these eight goals:

- Purposeful Education . . . Educate students for a lifetime of learning, citizenship, career development and personal enrichment.
- Enabling Environment . . . Provide for the diverse academic and life-development needs of students through an educational environment conducive to learning, teaching and working.
- Community Leadership . . . Facilitate educational, technological, cultural and economic development through activities that complement the learning environment on campus and in the communities Missouri State-West Plains serves.
- Collaboration . . . As an integral entity of the Missouri State University System, develop programs and services in partnership within the system and with other educational institutions that increase and enhance student educational opportunities.
- Performance . . . Ensure the highest quality of instruction and institutional effectiveness through assessment, evaluation and planning.
- Stewardship . . . Practice good stewardship of human, programmatic and physical resources for the common good of campus and community.
- Faculty and Staff . . . Recruit and retain the highest quality faculty and staff by providing competitive salaries and professional development opportunities and by enhancing the personal work-life experience for all employees.
- Funding . . . Increase funding from state, federal and private sources to ensure that Missouri State-West Plains can continue to provide the highest quality instruction and services.

Accreditation

Missouri-State-West Plains is accredited by The Higher Learning Commission and a member of the North Central Association (www.ncahlc.org; phone: (312) 263-0456). The Associate of Science in Nursing Program is approved by the Missouri State Board of Nursing and accredited by the National League for Nursing Accrediting Commission.

Associate Degrees Currently Offered-West Plains Campus

Associate of Arts in Teaching

Associate of Arts in General Studies

Associate of Applied Science in Respiratory Care

Associate of Science in Nursing

Associate of Applied Science in Business

Associate of Applied Science in Child and Family Development

Associate of Applied Science in Computer Graphics and Programming

Associate of Applied Science in Enology

Associate of Applied Science in Entrepreneurship

Associate of Applied Science in General Agriculture

Associate of Applied Science in General Technology

Associate of Applied Science in Law Enforcement

Associate of Applied Science in Viticulture

Fall Headcount Enrollment - West Plains Campus

	<u>2002</u>	<u>2003</u>	<u>2004</u>	<u>2005</u>	<u>2006</u>	<u>2007</u>	<u>2008</u>	<u>2009</u>	<u>2010</u>	<u>2011</u>
Enrollment Status										
Full-Time	864	925	877	886	795	961	1,073	1,260	1,360	1,284
Part-Time	856	776	769	792	801	796	761	902	869	858
Enrollment by Gender										
Male	571	581	548	580	557	663	704	885	903	850
Female	1,149	1,120	1,098	1,098	1,039	1,094	1,130	1,277	1,326	1,292
Total Enrollment	1,720	1,701	1,646	1,678	1,596	1,757	1,834	2,162	2,229	2,142

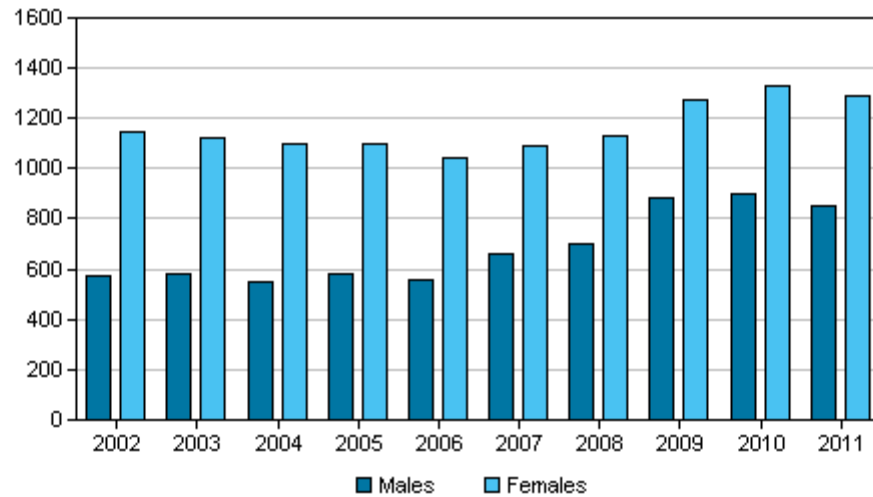
Source -- West Plains Institutional Research

Credit Hour Production by Semester - West Plains Campus

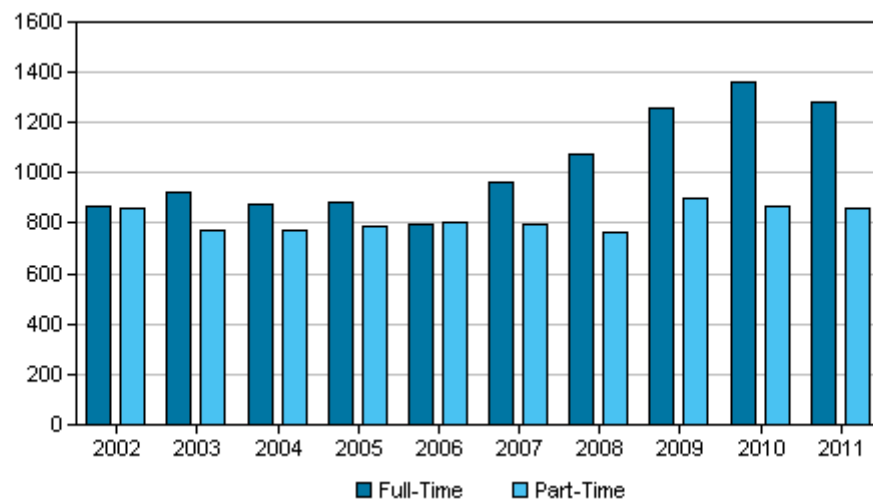
<u>Year</u>	<u>Fall</u>	<u>Spring</u>	<u>Summer</u>	<u>Total</u>
2007-2008	17,006	14,809	2,518	34,333
2008-2009	18,362	15,848	2,764	36,974
2009-2010	21,428	19,753	3,438	44,619
2010-2011	23,292	20,013	3,236	46,541
2011-2012	21,983	N/A	N/A	N/A

Source -- West Plains Institutional Research

Fall Enrollment by Gender - West Plains Campus



Fall Enrollment by Enrollment Status- West Plains Campus



Source -- West Plains Institutional Research

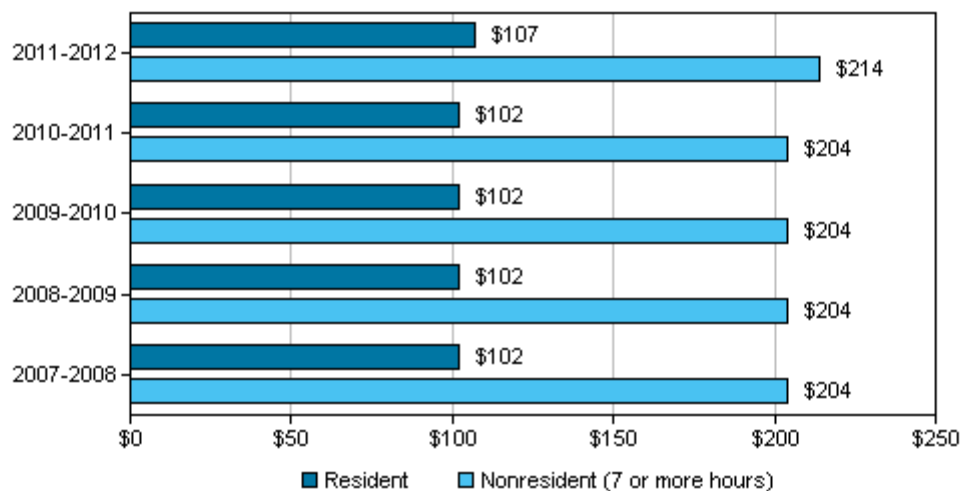
Schedule of Resident Student Fees* (in dollars) – West Plains Campus

	<u>2007-2008</u>	<u>2008-2009</u>	<u>2009-2010</u>	<u>2010-2011</u>	<u>2011-2012</u>
Basic Fees					
Resident	102	102	102	102	107
Nonresident (1-6 hours)	102	102	102	102	107
Nonresident (7 or more hours)	204	204	204	204	214
Student Service Fees*					
Enrollment in 1-5 hours	22	22	27	52	57
Enrollment in over 5 hours	47	47	47	72	72
Computer & Technology Usage (hourly)	5/hour (1-23 hours)	5/hour (1-23 hours)	5/hour (1-18 hours)	5/hour (1-18 hours)	5/hour (1-18 hours)
Computer & Technology Usage (maximum)	120 (24+ hours)	120 (24+ hours)	90 (18+ hours)	90 (18+ hours)	90 (18+ hours)

* Non-degree seeking students enrolled in one or two credit hours are not charged Student Services Fees.

Source -- MSU fee resolutions

Basic Fee Per Hour (in dollars) for Resident Students – West Plains Campus



Source -- MSU Fee Resolution

**Educational and General Funds (in dollars),
FY 2011 - West Plains Campus**

	Budgeted FY 2012 (Unrestricted)
Revenues	
Student Fees	3,899,717
Appropriations	5,198,240
Investments	50,000
Other Sources	206,950
Total Revenues	9,354,907
Expenditures	
Instruction	3,219,322
Public Service	401,173
Academic Support	951,680
Student Services	1,064,617
Institutional Support	2,283,477
Operations and Maintenance of Plant	930,974
Scholarships and Fellowships	565,260
Transfers	-107,695
Total Expenditures	9,308,808

Source - FY11 Internal Operating Budget



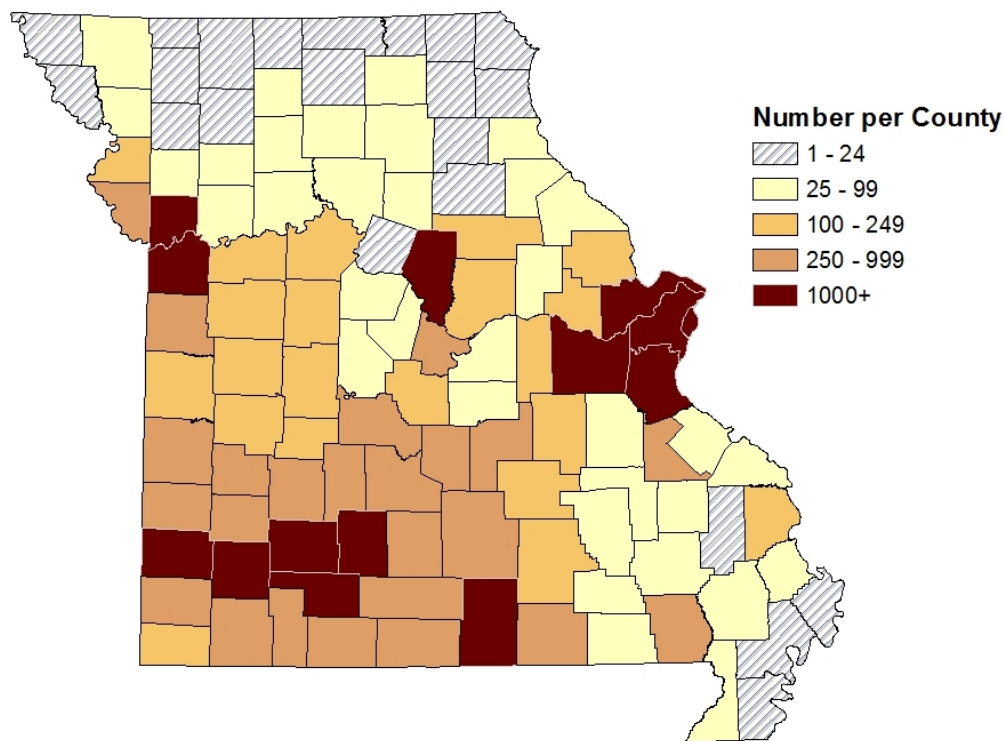
Alumni and Development

Highlights

- According to the latest records of the Office of Development and Alumni Relations, most of Missouri State University's alumni (over 72,000) currently reside in Missouri, representing every county. Thirty-eight counties have over 250 alumni, with over 21,000 residing in Greene County alone.
- Over 27,000 alumni live outside Missouri, representing every state in the United States and several foreign countries.
- The Alumni Association has developed programs and activities that allow alumni and former students to continue their identification with the University. In the fiscal year 2011, 7,633 alumni contributed over \$2.5 million.
- Gifts to the University Foundation during FY 2011 provided over \$16 million for student aid, endowments, capital projects, and other University programs.



Alumni by County of Residence

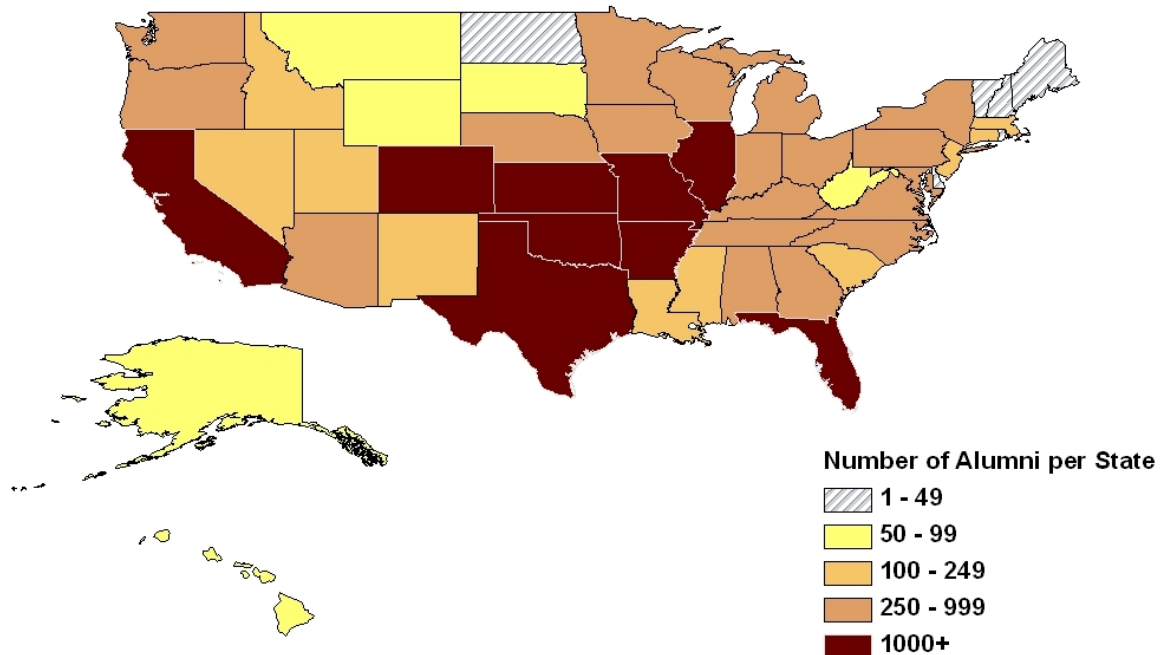


Counties in Missouri in which more than 250 alumni reside include:

Barry	605	Franklin	1,015	Polk	832
Barton	266	Greene	21,057	Pulaski	383
Boone	1016	Howell	1,910	St. Charles	3,736
Butler	263	Jackson	3,859	St. Francois	287
Camden	526	Jasper	1,362	St. Louis	9,005
Cass	667	Jefferson	1,366	St. Louis City	1,042
Cedar	294	Laclede	884	Stone	625
Christian	4546	Lawrence	1,182	Taney	967
Clay	1583	Newton	811	Texas	557
Cole	958	Oregon	355	Vernon	308
Dade	257	Ozark	310	Webster	1,545
Dallas	436	Phelps	531	Wright	645
Douglas	354	Platte	754		

Source -- Office of Development & Alumni Relations

Alumni by State of Residence



States in which more than 250 alumni reside include:

Alabama	257	Kansas	3,297	Oklahoma	1,229
Arizona	702	Kentucky	272	Oregon	292
Arkansas	1,796	Maryland	266	Pennsylvania	284
California	1,731	Michigan	323	Tennessee	645
Colorado	1,075	Minnesota	374	Texas	2,967
Florida	1,474	Missouri	65,602	Virginia	787
Georgia	736	Nebraska	342	Washington	413
Illinois	1,802	New York	435	Wisconsin	257
Indiana	469	North Carolina	516		
Iowa	475	Ohio	469		

Source -- Office of Development & Alumni Relations

Missouri State University Foundation

Formed in January 1981, the Missouri State University Foundation is a not-for-profit organization which has as its mission:

"To develop an environment which promotes giving and therein seek, receive, manage, and distribute resources in a manner appropriate to support programs of instruction, research, and public service of the University."

Thus, the Foundation is empowered to solicit and receive gifts and bequests, to accept trusts subject to the conditions imposed on them, and to hold, administer, manage, use, or distribute gifts, bequests and trusts for the benefit of Missouri State University. The Foundation exists to benefit Missouri State University, its faculty and students; to improve its standards and potentialities as an institution of higher learning; and to promote the general welfare of the University.

The main emphasis of the Foundation is centered on major donor solicitation, the Missouri State Annual Fund, the honor clubs, The Bears Fund, The Performance Society, and a planned and deferred giving program. The Annual Fund solicits gifts from faculty and staff, alumni, and friends of the institution through a Campus Campaign, the Nationwide Phone Campaign, and direct mail. The honor clubs, which offer special recognition for individual giving, include:

The Founders Club	Minimum of a \$10,000 outright gift over a ten year period, or a deferred gift with a present value of at least \$10,000
The President's Society	\$1,000 or more annually or larger gifts from donors who have not pledged at The Founders Club Level
The Carrington Club	\$500 or more annually or larger gifts from donors who have not pledged at The Founders Club Level
The Maroon and White Club	Gifts of \$250 to \$499 annually
The Century Club	Gifts of \$100 to \$249 annually

The Bears Fund is the fundraising program for intercollegiate athletics. The Performance Society is the fundraising program established to provide annual support for the operational needs of the Juanita K. Hammons Hall for the Performing Arts. Planned and deferred giving programs offer educational seminars and mailings for alumni and interested friends of the University, as well as provide donors opportunities to endow scholarships, grant bequests through their wills, establish life income gifts, and utilize other estate planning vehicles.

In fiscal year 2010-2011, 24,316 donors made 33,248 outright gifts of cash and property totaling nearly \$16.7 million. The total deferred gift commitments made to the University total over \$40 million. Gift and pledge commitments to the Foundation since its formation in 1981 have reached over \$225 million.

Gift Activity (in dollars)

	<u>2008-2009</u>	<u>2009-2010</u>	<u>2010-2011</u>
Outright Gifts of Cash	13,744,876	12,726,506	14,621,426
Outright Gifts of Property	1,299,658	2,785,865	2,077,055
Total Value of Outright Gifts	15,044,534	15,512,371	16,698,481
Total Value of Deferred Gifts	3,296,200	7,495,000	85,000
Total Value of All Gifts	18,340,734	23,007,371	16,783,481

Source -- Missouri State University Foundation

Sources of Outright Gifts (in dollars)

	<u>2008-2009</u>		<u>2009-2010</u>		<u>2010-2011</u>	
	<u>Donors</u>	<u>Donor</u>	<u>Donor</u>	<u>Amount</u>	<u>Donor</u>	<u>Amount</u>
Alumni	7,654	7,895	7,895	2,854,235	7,633	2,581,661
Other Individuals	15,621	14,406	14,406	4,216,345	15,342	6,691,830
Corporations & Businesses	1,418	1,230	1,230	6,790,647	1,179	5,672,745
Other Organizations	134	157	157	1,183,308	162	1,752,245
Total Value of Outright Gifts	24,827	23,688	23,688	15,044,535	24,316	16,698,481

Source -- Missouri State University Foundation

Purposes of Outright Gifts (by dollar amount)

	<u>2008-2009</u>	<u>2009-2010</u>	<u>2010-2011</u>
Student Aid	1,381,444	2,708,055	3,323,532
Endowment and Loan Funds	1,419,638	2,899,236	1,139,095
Capital Purposes	6,485,098	3,785,724	4,218,540
University Programs*	5,758,354	6,119,356	8,017,314
Total Value of Outright Gifts	15,044,534	15,512,371	16,698,481

Note: * University programs assisted through these gifts included academic departments, research projects, radio and other public service programs, library acquisitions, athletics and the general university

Source -- Missouri State University Foundation

**Missouri
State**
UNIVERSITY



Missouri State University – Mountain Grove

Highlights

- The State Fruit Experiment Station is the oldest identifiable component of the University having been founded in 1899.
- In 2006, the Fruit Sciences Department became part of the Department of Agriculture.
- Extensive experimentation on grapes has been conducted on the campus since 1900 and, today, the grape and wine program ranks among the most comprehensive in the United States.
- The campus is one of only three USDA quarantine facilities for the introduction and virus testing of grape varieties originating outside of the U.S.



History and General Information

The oldest identifiable segment of Missouri State University is the State Fruit Experiment Station which is located on the Mountain Grove Research Campus. The State Fruit Experiment Station has a legislated mandate to generate knowledge through research, and to disseminate this knowledge to support and expand the productivity and profitability of the Missouri fruit industry. The Station was founded by legislative act in 1899 and was assigned to the University on July 1, 1974, under the Omnibus State Reorganization Act. In 1994, the Station became the location of the newly designated research campus.

The Mountain Grove Research Campus (<http://mtngrv.missouristate.edu/>) is part of the School of Agriculture which is part of Missouri State. Permanent employees at the Fruit Experiment Station include faculty, professional staff and support staff. The station also employs visiting scientists and from 20 to 25 temporary and student employees throughout the year. In addition to carrying out research and advisory programs, faculty guide graduate students in thesis research, and teach classes in their various disciplines. Faculty and professional staff supervise undergraduates on internships.

Research is focused on pomology, plant pathology, entomology, genetics, plant physiology, viticulture and enology. Plant pathogens and insect pests are studied to help reduce their damage to fruit crops. Reducing pesticide use for management of diseases, insects, and weeds is a major ongoing research effort. Also investigation is ongoing on nutrient and water requirements, pruning and training systems, growth regulators, and rootstocks. The fruit crops under investigation include apples, grapes, blueberries, peaches, strawberries, blackberries, raspberries, and exotic native fruits such as persimmon, pawpaw and elderberry.

Grapes are of particular interest at Mountain Grove Research Campus. Located in a natural grape environment, the campus has been the site of extensive grape experimentation since 1900. Today, research of the Vitis Gene Discovery Program explores the genetic basis for disease resistance in native grapes. Research and advisory education efforts are the basis for the recent rapid economic development of Missouri's grape and wine industry. The grape and wine program ranks among the most comprehensive in the United States. One of only three USDA quarantine facilities for the introduction and virus testing of grape varieties originating outside of the United States is located in the Station.

Information derived from the Station's research is disseminated by advisory programs to fruit growers and processors through bulletins, newsletters, a newspaper column, conferences, workshops, and personal consultations.

An interdepartmental master's degree program in plant science was initiated in August of 1997. This program includes Biology and Chemistry as well as faculty from the School of Agriculture. Graduate students desiring an emphasis in pomology, pest management, molecular genetics, or viticulture and enology take courses and conduct thesis research with faculty at the Missouri State Fruit Experiment Station.

Facilities on the campus include Shepard Hall, a research winery, a shop and maintenance building, a newly renovated dormitory that can house 22 students, greenhouse facilities, cold storage, and a fruit processing education building with a commercial teaching winery and distillery. Historic Faurot Hall, renovated in 1998, houses a library, two interactive television classrooms, a large conference room, and a plant science laboratory.

Current Highlights

Center for Grapevine Biotechnology

The center has received over \$2 million in external funding over the past few years. A current project is mapping grape defense genes which would facilitate plant breeding for disease resistance and placing other desired traits in new varieties. The Norton Genome Sequencing Project seeks to identify DNA in the state grape, Norton. Another project is to investigate the potential for new commercial products for enhanced plant and human health. Also underway is a survey and characterization of viruses in Missouri vineyards and native grapes. Each of these projects has the capacity to effect scientific knowledge as well as the economic development of Missouri.

Mountain Grove Cellars

Products from the vineyards are available for sale onsite. Award winning wines, ports, and jellies from a variety of crops are available on campus including the newest distillery product, peach brandy.

Journagan Ranch

The ranch is located about ten miles south of the university's Mountain Grove Campus and includes more than 3,300 acres, as many as 1,000 head of cattle, equipment and other ranch facilities. Over the next several years, the ranch will allow us to develop even more comprehensive programs in animal science, conversation, soils and plant science. We expect that the addition of the ranch will improve our capacity to compete for external grants and contracts. And, of course, the programs on the Journagan Ranch will be coordinated with the work already being done at the Darr Agricultural Center in Springfield and the Research Campus in Mountain Grove.

Other Research Activities

One researcher is studying the insect-deterrent properties of compounds in the Gingko tree. Another researcher is studying and growing native flowers for dried cut-flower production and has started a rain garden on the campus. Other researchers are studying forage and buffer strips for water management in rural areas.

Outreach Activities

Workshops are held to educate the general public about fruit production topics such as culture, pruning, and variety selection. School tours are conducted for hundreds of K-12 students in southwest Missouri. In addition, a distillation and home winemaking workshop are held annually at the Station.